

Ulti Roll Entry

COMPACT SPEED DOOR FOR INTERIOR SPACES



The Ulti Roll Entry is a compact high-speed door, that is low maintenance, customisable, simple to use, and designed to replace traditional and retail swing doors.

Space Saving

The ultra compact design of the Ulti Roll Entry with integrated motor and control panel, and compact header and side frames, uses significantly less floor area and wall space than traditional hinged and sliding doors making it a smart choice for narrow spaces, hallways, or doorways.

Low Maintenance

Auto-refeed slots allow the door curtain to reinsert itself in the guide after being impacted, meaning less maintenance, less downtime, and reduced costs. Integrated motor and controls also helps avoid dust build-up, thus further reducing the maintenance and increasing the long-term durability of the door. The brushless motor also reduces wear and corrosion and provides excellent durability and reliability.

Ideal for use in

- Offices
- Hallways
- Sanitary Facilities
- Hospital & Welfare Facilities
- Cafes & Restaurants
- Restrooms

Quiet

The brushless motor ensures that the Ulti Roll Entry is a very quiet operating door, perfect for low-noise environments such as office applications and hallways.

Easy Activation

With a simple, one-touch control button, the Ulti Roll Entry is easy and convenient to use. An optional contactless activation can be applied helping to eliminate the transfer of bacteria for ultimate hygienic and sanitary operation.

Customisable

With custom printing, the Ulti Roll Entry is customisable to suit your needs from designating areas within your facility, to promoting your brand. Should you need to relocate the door or change the curtain design, it is also simple to move the whole unit or simply replace the curtain for reduced downtime and costs.



STANDARD COMPLIANCE

Wind Loading	Not Tested	Safe Openings	Yes
Pressure Differential	Up to 10Pa		

TECHNICAL SPECIFICATIONS

Application	Internal only
Standard Size	2100mm H x 1600mm W
Minimum Size	1100mm H x 600mm W
Maximum Size	3000mm H x 3000mm W
Opening Speed	2.0m/s - variable
Closing Speed	0.7m/s - variable
Operating Temperature	-10°C to +40°C

STRUCTURE

Material	Colour-finished Aluminium
Colour	RAL1013

SPACE REQUIREMENTS

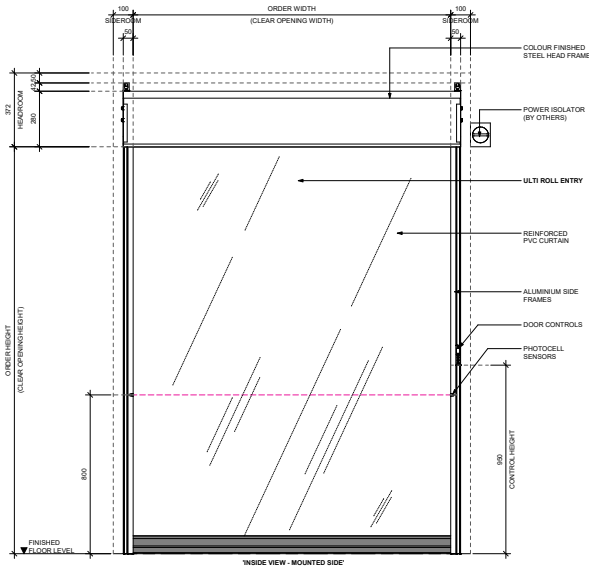
minimum clearances

Headroom	372mm
Sideroom	100mm (motor side and non-motor side)

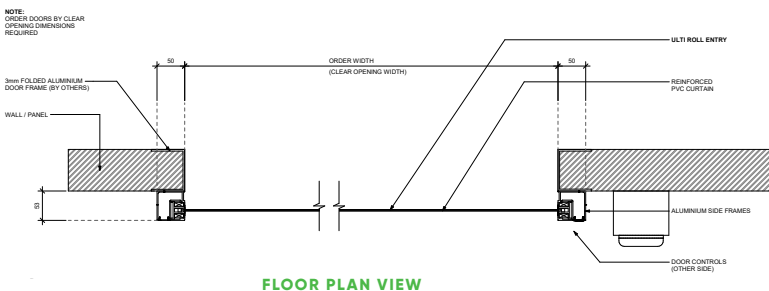
CURTAIN

Material	Reinforced PVC
Colour	Semi-Transparent Clear
Bottom Edge	RAL 9005
Vision Panels	Standard Vision Panel

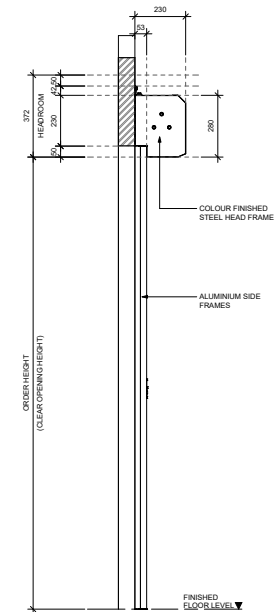
DIMENSIONS



FRONT ELEVATION VIEW



FLOOR PLAN VIEW



SIDE ELEVATION VIEW

MOTORISATION

Motor	0.4kW Brushless DC Motor
Motor Position	Internal
Control Panel	Internal
Power Supply	240V; Single Phase; 10Amp Rated adjacent to head unit installed to right hand side

ACTIVATIONS

Manual	Push button on leg frame Manual Push button
--------	--

SAFETY

Standard Inclusions	1 Set of Infrared Photocell Safety Beams IP65
Emergency Egress	Manual Break-Out

STANDARD INCLUSIONS

Auto Refeed Slot	Patented Sliding System with High Density Polyethylene Guides
Perimeter Seal System	Variable Speed Control

Cycle Rating	100 cycles/hr
--------------	---------------

WARRANTY

12 Months	*Std Warranty terms and conditions apply
-----------	--

OPTIONAL FEATURES

Activations	Touchless Switch Infrared Activation Sensor Eagle Radar Interlocking Relay
-------------	---

Motorisation	0.95kW Brushless DC Motor
--------------	---------------------------

Mounting Options	LH Power Supply
------------------	-----------------

Frame Materials	Anodised Aluminium AISI: 304 Stainless Steel (Head Unit only)
-----------------	--

Curtain Colour	SS Clear, Magic Optron (Insect-proof), Opacity (Blue, Orange, Black)
----------------	--

Curtain Design	Full Width Vision Sector Full Vision Curtain Custom Curtain Printing
----------------	--

Emergency Egress	UPS Battery Backup (Single Phase)
------------------	-----------------------------------

Other Features	Interlocking Relay
----------------	--------------------