

Rite-Vu™ Light Communication Systems

Clear concise communication at the loading dock with Rite-Vu™ Light Communication Systems.



NEMA 4X Dok-Lok®-Style Inside Control Box

*Panel cover decal may vary by model number and options selected

Increase Safety and Productivity

Enhancing communication at the loading dock increases safety and can play a key role in helping achieve productivity goals.

Light Communication Systems clearly inform dock personnel when they can safely enter or exit a trailer and inform truck drivers when it is safe to depart.

Available Light Communication Systems

Rite-Hite® offers two Light Communication Systems to meet various budgets and to help address both current and potential needs.

Each system features an inside communication/control box, outside communication lights and interior/exterior instructional signs.

Traffic-Style Light Communication System

» Offers basic communication between dock personnel inside the building and truck drivers outside of the building

» Dock attendant controls communication with a three-position toggle switch (red, green, off)

» Allows for limited integration of additional/future equipment

Dok-Lok®-Style Light Communication System

» Offers enhanced communication between dock personnel inside the building and truck drivers outside of the building

» Dock attendant controls communication with a NEMA 4X rated user interface with membrane switch buttons

» Allows for full integration of additional/future equipment and interlocked sequence of operations

» When interlocked with equipment, helps to ensure that safety protocols and processes are followed

Rite-Vu™ Line of Sight Light Communication

Dok-Lok®-Style Light Communication Systems offer the flexibility to add line of sight verification of the light communication system status.

Corner-Vu™ mounts above the upper corners of the dock door opening and provides line of sight light communication system status to dock personnel before entering the trailer

Leveler-Vu™ mounts at the rear sides of the leveler and provides line of sight light communication status to dock personnel while exiting the trailer



Corner-Vu™ top right corner/Leveler-Vu™ lower left corner

Specifications

Dok-Lok®-Style Light Communication System

NEMA 4X Controller Dimensions: 12.25" x 10.25" x 5.5" (L x W x H)
Outside Light Box Dimensions: 12.25" x 6.25" x 3.75" (L x W x H)
Electrical: 110/1/60, LED light bulbs, all components UL listed



Left: Dok-Lok®-Style Inside Controls

Interior/Exterior Instructional Signs

Middle: Outside Communication Lights

Traffic-Style Light Communication System

Three-position Toggle Dimensions: 12.25" x 6.25" x 3.75" (L x W x H)
Outside Light Box Dimensions: 12.25" x 6.25" x 3.75" (L x W x H)
Electrical: 110/1/60, LED light bulbs, all components UL listed



Left: Three-Position Toggle Switch
Inside Controls

Interior/Exterior Instructional Signs

Middle: Outside Communication Lights

Application Guidelines

1. For non-standard control boxes, electrical requirements or sequence of operations, please consult the Rite-Hite® applications team.
2. Rite-Vu™ products will be packaged independently from restraint control boxes, as standard and ship from Horn Lake, MS 38637
3. Leveler-Vu™ requires minimum 9/16" gap between weatherseal channel and side pit curb steel.
4. Corner-Vu™ and Leveler-Vu™ will match the light operating mode (flashing or solid) which is selectable using Dok-Lok®-Style Light Communication System.

Rite-Vu™ Hazard Recognition and Control Light Communication System

☐ Traffic-Style Light Communication System

☐ Dok-Lok®-Style Light Communication System

☐ **Corner-Vu™**: Provides line of sight light communication system status to dock personnel before entering the trailer.

☐ Corner-Vu™ w/ 10 ft. ext. cable

Components: 2 pair of lights, 2 brackets & cables

Location: Each side of interior dock door, upper corners

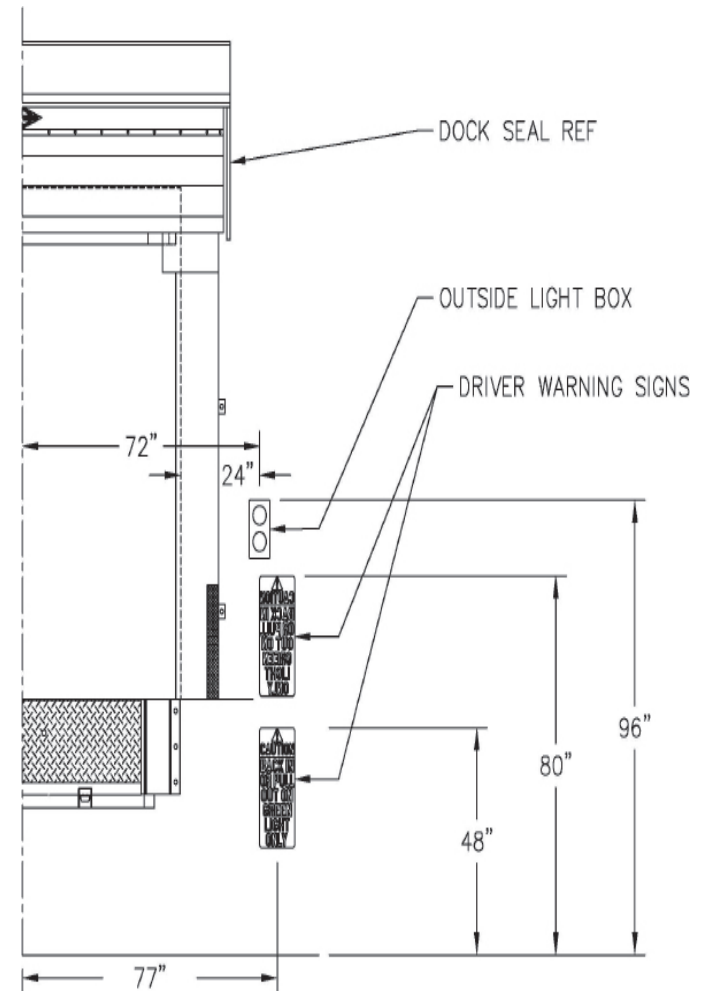
☐ **Leveler-Vu™**: Provides line of sight light communication system status to the dock personnel while exiting the trailer.

☐ Vertical Leveler Leveler-Vu™

Components: 2 lights, hardware and cables

Location: Each side of dock leveler, rear of leveler pit

Installation



Client Info

Company Name

Date

ulti
group

105 Glover Road, Hawera, 4610
PO Box 340, Hawera, 4640

CALL FREE NZ
EMAIL
WEBSITE

0800 807 753
sales@ultigroup.co.nz
ultigroup.co.nz