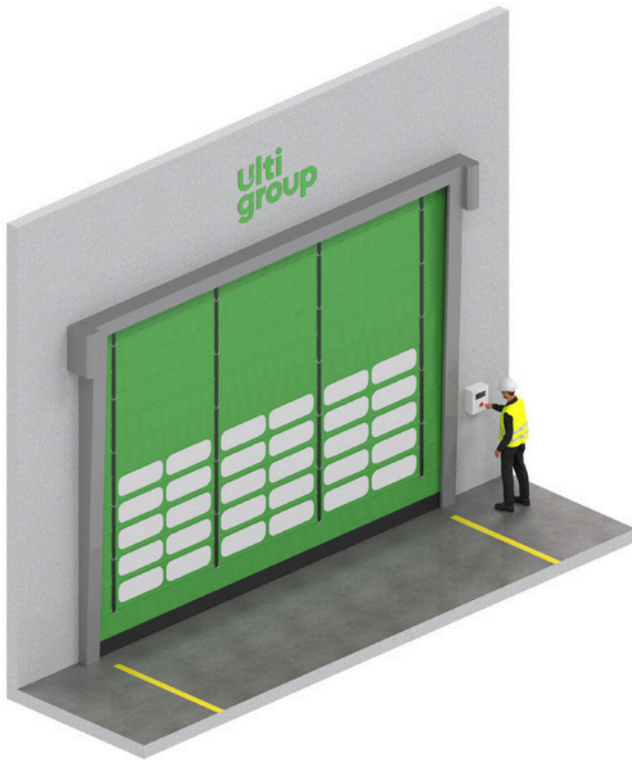


# Ulti Fold XL

## HIGH STRENGTH DOOR SYSTEM FOR EXTRA LARGE OPENINGS



When you need a door for an extra large opening, that still withstands NZ's wind conditions, the Ulti Fold XL is the ideal solution. Combining both reasonable speed and high wind strength, it is suitable for frequent access openings. Providing a simple, safe, reliable solution to control your environment.

### Large Span

Turn your large openings into responsive openings with the Ulti Fold XL, spanning up to 10.5m wide and 9m high openings. Allows control of dust, birds and/or personnel in areas requiring access for large vehicles or similar e.g. truck loading canopies.

### Strength Where It Matters

Exterior building doors need to be immensely strong to endure NZ's high winds, harsh storms or other severe environmental conditions, and the Ulti Fold XL is designed and manufactured in NZ to withstand them all, with a wind speed rating of up to 120km/h.

### Ideal for use in

- Warehouses
- Distribution Centres
- Manufacturing Facilities
- Printing Companies
- Logistics
- Dust Control
- 'Big-box' Retail
- Fertiliser storage
- Washdown areas
- External applications
- Mining and Quarries

### Safety Where It Matters

Height adjustable photocells detect traffic and reverse the closing door. Vision panels can be added to enhance visibility when closed or opening, maximising safety to prevent personnel harm and vehicle damage.

### Speed Where It Matters

Reduced waiting times for doors to open and close increases productivity and efficiency in your facility with the Ulti Fold XL. Prompt closing of openings after use ensures maximum environmental control benefit.

### Robust Versatility

The Ulti Fold XL can be widely applied, and offers enhancements to ensure it continues to perform reliably even in harsh environments such as fertiliser storage or areas exposed to salt laden air. Building on the original Ulti Fold, the industry work horse continues to deliver value in even tougher conditions.



STANDARD COMPLIANCE

Air Permeability	Class 0 (Not Tested)	Water Permeability	Class 1
Wind Rating	Up to 120km/h	Thermal Transmittance	6.02 W/m²K
Safe Openings	Yes	Pressure Differential	Up to 60Pa

TECHNICAL SPECIFICATIONS

Application	Internal/External
Standard Size	6000mm W x 6000mm H
Minimum Size	3500mm W x 4000mm H
Maximum Size	10500mm W x 9000mm H (max 50m²)
Opening Speed	up to 1.0m/s (variable)
Closing Speed	up to 1.0m/s (variable)
Operating Temperature	0°C to +50°C

STRUCTURE

Frame Material	Galvanised Steel
Frame Colour	Galvanised

CURTAIN

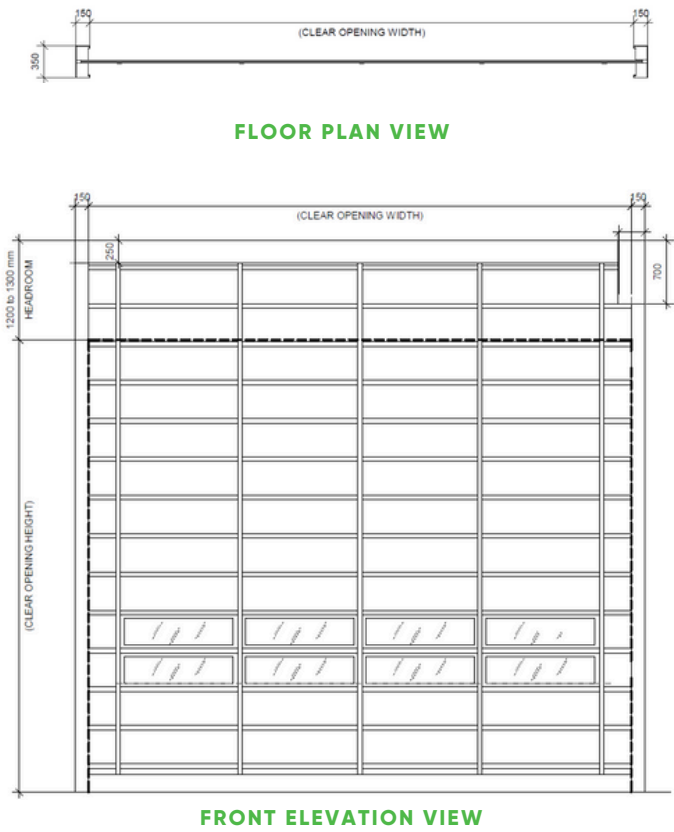
Material	900gsm Reinforced PVC Curtain
Curtain Colour	RAL6018 (standard), RAL1003, RAL2008, RAL5002, RAL7042, RAL9005
Support	Galvanised Steel Wind Strengthening Bars within curtain
Vision Panels	2 rows of clear-vision panels

SPACE REQUIREMENTS

minimum clearances

Headroom	1200-1300mm (size dependant)
Sideroom	200mm (motor side), 200mm (non-motor side)

DIMENSIONS



MOTORISATION

Motor	IP54 rated 2.2kW Heavy Duty 3phase Motor Drive and electromagnetic brake
Motor Position	RH Front Mounted
Control Panel	IP65 rated Control box with inverter frequency controller – RH mounted
Power Supply	400V; 3phase+N+E; 16Amp Rated adjacent to control box installed to right hand side

ACTIVATIONS

Large heavy-duty mushroom head push button Push button fitted to control box
---

STANDARD SAFETY INCLUSIONS

2 sets of Infrared Photocell Safety beams IP65 Soft PVC Bottom Edge	
Manual Opening	Manual Hand Crank

STANDARD INCLUSIONS

Internal tapered Leg for enhanced seal and vermin proofing Performance Rated to 1,000,000 cycles
---

WARRANTY

Warranty	24 Months or 100,000 Cycles *Std Warranty terms and conditions apply
----------	---

OPTIONAL FEATURES

Activations	All Ulti Activation options can be applied
Mounting Options	LH Power Supply, Custom Control Box Position, LH Control Box, LH Front Mount Motor
Frame Material	Corrosion Resistant AISI:304 Stainless Steel
Frame Colours	RAL3000, RAL5002, RAL6018, RAL7042, RAL9005, RAL9010, Custom
Vision Panels	1 or 3 rows, custom rows available
Ventilated Panels	1, 2, or 3 rows, custom rows available
Safety	Virtual Vision, LED-Pre Announce 2000mm Light Curtain Sensors IP67

