

Ulti Fold Plus

HIGH PERFORMANCE DOOR SYSTEM FOR LARGE OPENINGS

The Ulti Fold door is ideal for situations where both enhanced speed and high wind strength are required for frequent access. Providing a simple, safe, smart solution to control environments for larger openings traditionally left without doors or using inefficient slow doors.

Large Span

Turn your large openings into responsive openings with the Ulti Fold Plus, spanning up to 10.5m wide and 8m high openings. Allows control of dust, birds and/or personnel in areas requiring access for large vehicles or similar e.g. truck loading canopies.

Strength Where It Matters

Exterior building doors need to be immensely strong to endure NZ's high winds, harsh storms or other severe environmental conditions, and the NZ-made Ulti Fold Plus has been designed to withstand them all, with a wind speed rating of up to 160km/h.

Ideal for use in

- Warehouses
- Distribution Centres
- Manufacturing Facilities
- Printing Companies
- Logistics
- Dust Control
- 'Big-box' Retail
- Aviation/Airport
- Waste Treatment Facilities
- Ship-Yard/Ports
- Agriculture
- Heavy Industry

Safety Where It Matters

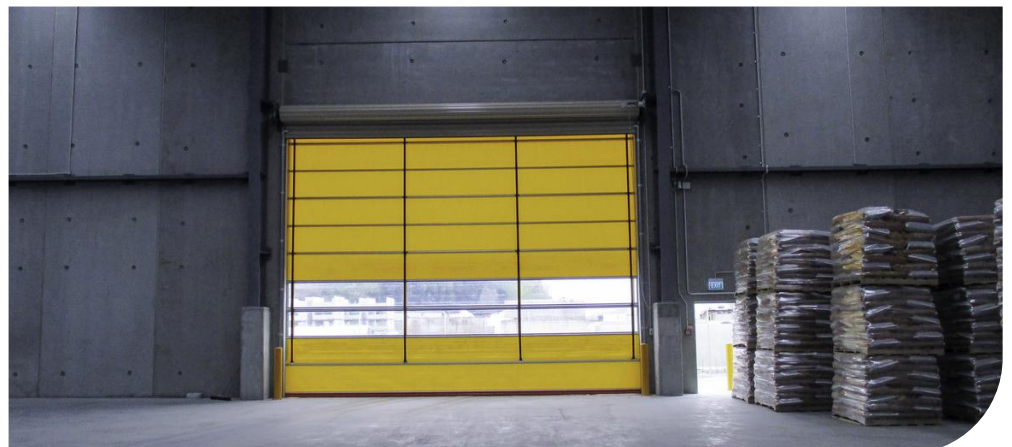
Adjustable photocells with a 20m range detect traffic and reverse closing door, and vision panels can be added to enhance visibility when closed or opening, maximising safety to prevent personnel harm and vehicle damage.

Speed Where It Matters

Reduced waiting times for doors to open and close increases productivity and efficiency in your facility with the Ulti Fold Plus. Prompt closing of openings after use ensures maximum environmental control benefit.

Robust Versatility

The Ulti Fold Plus can be widely applied and offers enhancements to ensure it continues to perform reliably even in harsh environments such as fertiliser storage or areas exposed to salt-laden air. The industry workhorse continues to outperform its traditional alternatives.



STANDARD COMPLIANCE

Wind Permeability	Not Tested	Water Permeability	Class 1
Wind Loading	Class 3 width dependent	Thermal Transmittance	6.02 W/m²k
Safe Openings	Yes	Pressure Differential	Up to 60Pa

TECHNICAL SPECIFICATIONS

Application	Internal/External
Standard Size	5000mm H x 5000mm W
Minimum Size	3000mm H x 3000mm W
Maximum Size	8000mm H x 10500mm W (maximum 50m²)
Opening Speed	up to 1.5m/sec
Closing Speed	0.5m/sec (variable)
Operating Temperature	-20°C to +50°C (<0°C requires heated frame, motor + control box)

STRUCTURE

Material	Galvanised steel, self-supporting head frame structure with aluminium drive drum Proprietary leg frame and motor cover in galvanised finish
Colour	Galvanised

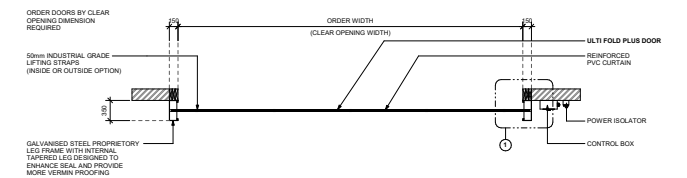
SPACE REQUIREMENTS
minimum clearances

Headroom	1200-1300mm (size dependant)
Side Room	200mm (motor side and non-motor side)

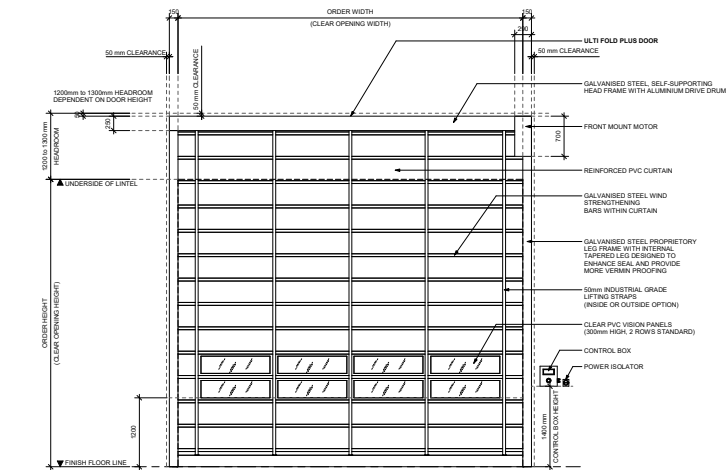
CURTAIN

Material	Reinforced PVC curtain
Colours	RAL6018 (standard), RAL1003, RAL2008, RAL5002, RAL7042, RAL9010
Support	Galvanised steel wind strengthening bars within curtain
Vision Panels	2 rows of clear-vision panels

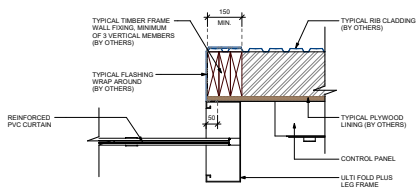
DIMENSIONS



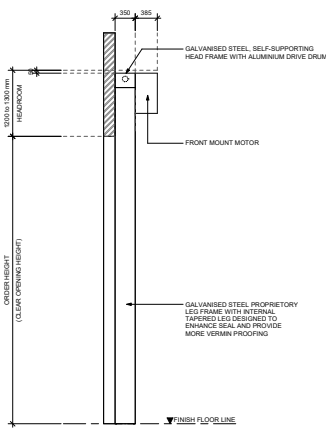
FLOOR PLAN VIEW



FRONT ELEVATION VIEW



TYPICAL WALL FIXING DETAIL



SIDE ELEVATION VIEW

MOTORISATION

Motor	IP54 rated 2.2kW Heavy Duty 3phase Motor Drive and electromagnetic brake – RH mounted
Motor Position	RH Front
Control Panel	IP65 rated ABS Control Box with inverter frequency controller – RH mounted
Power Supply	400V; 3phase+N+E; 15Amp Rated adjacent to control box installed to right hand side

ACTIVATIONS

Manual	Large Heavy-duty Mushroom Head push button Push button and Emergency stop button fitted to control box Touchscreen user interface
--------	---

SAFETY

Standard Inclusions	1 set of infrared photocell safety beams IP65 2000mm high Tower Beam Safety Sensors IP67
---------------------	---

STANDARD INCLUSIONS

Internal Tapered Leg designed to enhance seal, and provide more vermin proofing

WARRANTY

24 Months or 100,000 Cycles *Std Warranty terms and conditions apply

OPTIONAL FEATURES

Activations	All Ulti activation options can be applied
Mounting Options	LH power supply, LH motor, LH control box Custom control box position
Frame Material	Corrosion Resistant AISI:316 Stainless Steel
Frame Colours	RAL3000, RAL5002, RAL6018, RAL7042, RAL9005, RAL9010 RAL colour of your choice
Curtain Colours	RAL3000, RAL3004, RAL3020, RAL5005, RAL5011, RAL5013, RAL5015, RAL5021, RAL6005, RAL7038, RAL8017, RAL9005
Vision Panels	1 or 3 rows, custom rows available
Ventilated Panel	1 or 3 rows, custom rows available
Safety	Virtual Vision