

Ulti Flex Bi-Parting

HIGH PERFORMANCE BI-PARTING FREEZER DOOR

The Ulti Flex Bi-parting door is the benchmark for cold storage doorways. Reliable and rugged, efficient and energy conserving, speedy and safe it will save you energy and improve efficiencies while reducing maintenance costs at the same time.

Speed Where it Matters

With opening and closing speeds of up to 2m/s this is one of the fastest insulated freezer doors available reducing cycle times and maximising productivity at your facility. Quick operation of the door enables you to maintain temperature control in your facility at all times.

Energy Saving

The Ulti Flex Bi-parting door has excellent high performance thermal insulation which allows you to maximise your energy savings through your doorways at your coldstorage facility by preventing warm cold air transfer and eliminating ice and moisture build up on the door.

Ideal for use in

- Cold Stores
- Logistics
- Distribution Centres
- Freezer rooms

Low Maintenance

The panels of the Ulti Flex Bi-parting door can flex and twist to absorb a high percentage of accidental forklift collisions yet still return quickly to its original shape. Greater impactability equals less downtime and reduced maintenance costs.

Space Saving

The Ulti Flex Bi-parting door system is truly a one door system. In addition to the cost efficiency, this door has a very small footprint as it removes the need for an igloo, saving you valuable ELA or corridor space.

Safety Where It Matters

By reducing ice build up, the Ulti Flex Bi-parting door protects what matters in your facility by allowing a dry floor which in turn protects your people, product and facility from harm.



STANDARD COMPLIANCE

Wind Permeability	Class 4	Water Permeability	Class 1
Wind Loading	Class 1	Acoustic Performance	32dB
Thermal Transmittance	0.23W/m²K	Safe Openings	Yes
Pressure Differential	Up to 20Pa		

TECHNICAL SPECIFICATIONS

Application	Internal/External
Standard Size	3600mm H x 2400mm W
Minimum Size	2000mm H x 1200mm W
Maximum Size	5400mm H x 3200mm W
Opening Speed	Up to 2m/s
Closing Speed	1m/s - variable
Operating Temperature	-40°C to +50°C

STRUCTURE

Material	Aluminium Surround Frame
Colour	Mill Finish Aluminium

SPACE REQUIREMENTS

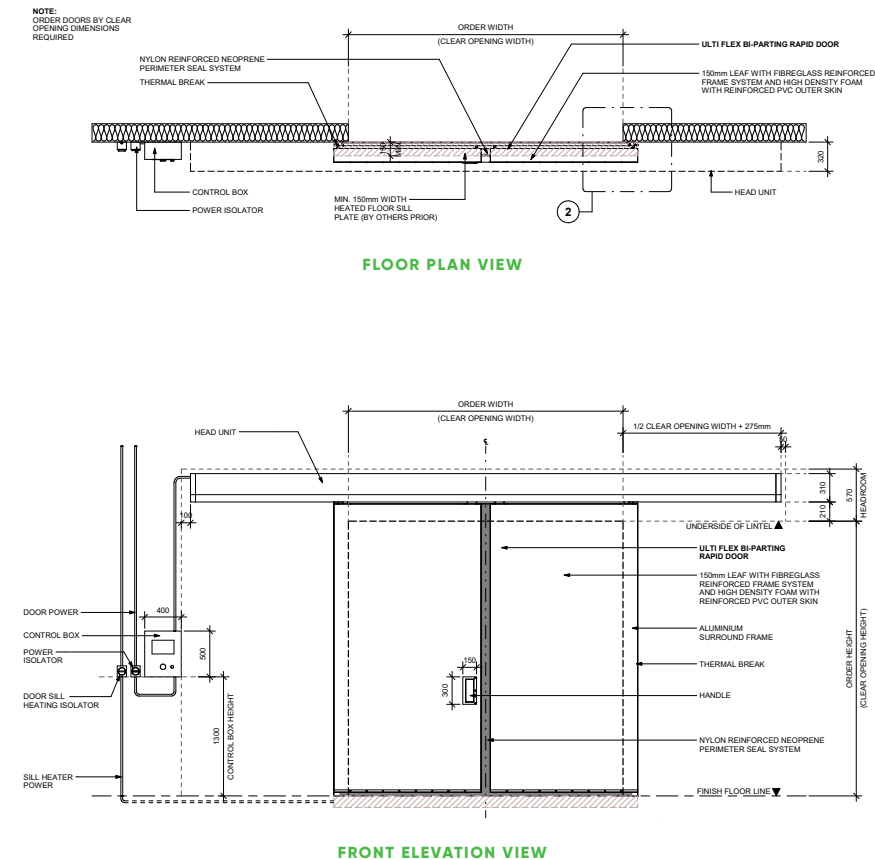
minimum clearances

Headroom	570mm
Sideroom	1/2 Clear Width + 275mm (motor side), 1/2 Clear Width + 275mm (non-motor side)

CURTAIN

Material	150mm leaf with Fibreglass reinforced frame system and high density foam with reinforced PVC outer
Colour	RAL6018 (Standard), RAL1003, RAL2004, RAL2008, RAL5002, RAL7042

DIMENSIONS



MOTORISATION

Motor	IP54 rated 1.1kW Heavy Duty 3phase Motor Drive & electromagnetic brake
Motor Position	Centre Front
Control Panel	IP54 rated ABS Plastic with inverter frequency controller
Power Supply	400V; 3phase+N+E; 20Amp Rated adjacent to control box installed to right hand side
Heating Power Supply	230V; Single Phase; 20Amp

ACTIVATIONS

Manual	Large Heavy-duty Mushroom Head push button Push button and Emergency stop button fitted to control box
--------	---

SAFETY

Standard Inclusions	2 Sets of Infrared Photozell Safety beams IP65
Emergency Egress	Manual Slide Open

STANDARD INCLUSIONS

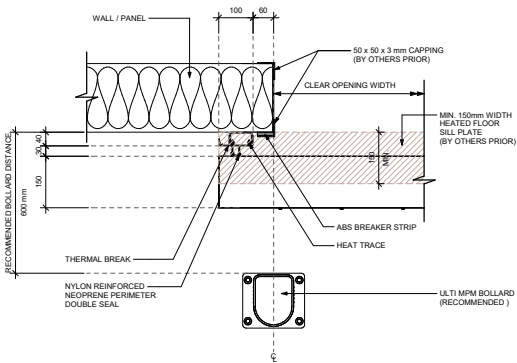
Heating System incorporated in both door frame and door panels
Nylon reinforced neoprene perimeter seal system
Touchscreen interface on control box
Hood Cover in Colousteel Titania
Proprietary Panel Floor Guides
Personnel Safety Barrier x2

WARRANTY

24 Months or 100,000 Cycles
*Std Warranty terms and conditions apply

OPTIONAL FEATURES

Activations	All Ulti Activation options can be applied
Control Panel	IP54 Corrosion Resistant AISI:304 Stainless Steel
Mounting Options	LH Power Supply, Custom Control Box Position, LH Control Box
Safety	Virtual Vision Extended LED Countdown Timer Safety Reversing Edge for Leading Edges Safety Reversing Edge for Rear of Panel LED Pre-Announce
Other Features	Secure Locking Device Upgrade for cold side door mounting Wind Locks Thermal Isolation Mounting system - recommended for retrofit



CROSS-SECTION THROUGH DOOR / WALL