

# Thermo 40

## INSULATED SECTIONAL DOOR



This door system combines excellent sound and thermal insulation properties, with clean, modern designed 40mm micro-profiled panels. Application options are almost limitless due to the extensive range of colours, vision options and unique hardware configurations available, making it ideal for a wide variety of projects.

### Energy Saving

Thermal Performance of this door is ensured, given the quality PU high-density panel core complemented by robust full perimeter seals. A U-value of 1.33W/m<sup>2</sup>K ensures optimum energy management of controlled environments, whether cooled or heated.

### Sound Insulation

The Thermo 40 door system is certified for world class performance. Tested by TÜV Nord, airborne sound reduction acc. to EN717-1 is 25dB which means it can be applied to any project requiring effective sound reduction.

### Ideal for use in

- Warehouses
- Distribution centres
- Manufacturing facilities
- Logistics companies
- Heavy-use environments
- Industrial facilities
- Convention centres
- Airports or Military

### Architectural Applications

Exterior of panels has a micro-line profiling and a polyester coating available in multiple colour selections. This can be complemented by various window sizes. Either one or more panels can be replaced with anodised aluminium profiles which allows multiple glazing options. Alternatively, vision options include extra low burglar resistant windows or attractive round windows.

### Safety Certified

Next level in quality, it is built to exceed AS/NZS standards meaning you can trust the Thermo 40 door system to protect your people at all times, and be assured of long-term reliability. The door hardware systems include multiple safety enhancements and have been stress tested and assessed to fully comply to EN13241-1 and are all TÜV Nord certified.

### Configurability

Uniquely customisable components ensure the door can be correctly adapted to optimise design and function. Multiple automation and safety systems are available including high speed operation. This flexibility ensures you receive what you need.



## STANDARD COMPLIANCE

Wind Permeability	Class 3	Water Permeability	Class 3
Wind Loading	Up to Class 4	Acoustic Performance	25dB
Thermal Transmittance	1.33 W/m²K	Safe Openings	Yes

## TECHNICAL SPECIFICATIONS

Application	Internal/External
Standard Size	3500mm H x 3000mm W
Minimum Size	1800mm H x 1800mm W
Maximum Size	6000mm H x 8000mm W
Opening Speed	Up to 200mm/sec - variable
Closing Speed	Up to 200mm/sec - variable

## TRACK SYSTEM

Material	Galvanised Steel
----------	------------------

## SPACE REQUIREMENTS

### minimum clearances

Headroom	500mm
Sideroom	295mm (motor) 120mm (non-motor side)

## BLADE

Material	Thermo 40mm panels with micro-profile exterior
Colour	RAL9002 (standard)
Vision Panels	Rectangular, Double Glazed (680mm W x 370mm H)

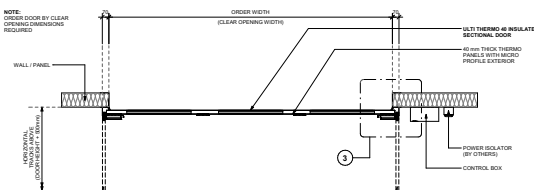
## MOTORISATION

Motor	T75 Automation package: 0.37kW; Torque; 50Nm
Motor Position	RH Side
Control Panel	IP54 rated Metal Control box with inverter frequency controller – RH mounted
Power Supply	400V; 3phase +N+E; 16Amp Rated; 50Hz adjacent to control box installed to right hand side

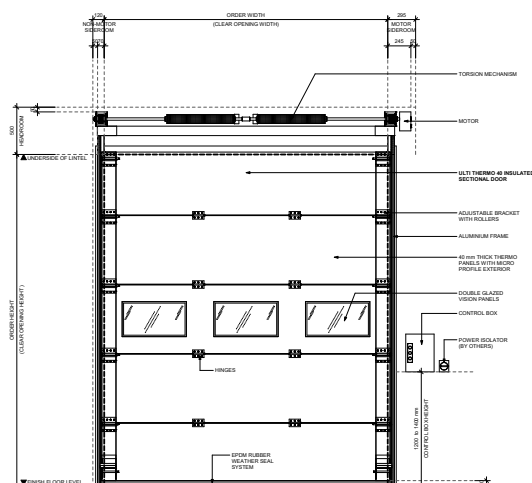
## SAFETY

Standard Inclusions	Opto-sensor safety edge system, Spring break safety devices
Emergency Egress	Manual Hand Chain

## DIMENSIONS



FLOOR PLAN VIEW



FRONT ELEVATION VIEW

## ACTIVATIONS

Manual	Push button fitted to control box: Up-Stop-Down
--------	-------------------------------------------------

## STANDARD INCLUSIONS

T450 Track System for Std. Lift  
EPDM Rubber Door Seals  
30,000 cycle rated Springs  
Performance rated to 100,000 cycles

## WARRANTY

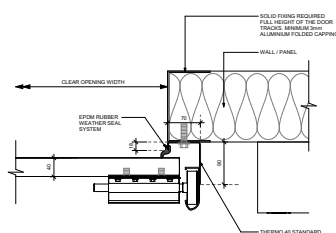
12 Months or 10,000 Cycles  
\*Std Warranty terms and conditions apply

## OPTIONAL FEATURES

Activations	All Ulti Activation options can be applied Exterior push buttons Interior and/or exterior key switch
Motorisation	T100 – Heavy duty automation package (recommended >20m²) T100 Smart – Smart automation package <27m² T100 Speed – Speed automation package <22m² up to 600mm/sec operation
Mounting Options	LH Power Supply, LH Control Box, LH Motor, Custom Control Box Position
Power Supply	240V single phase +N+E; 15Amp (isolator required adjacent to control box, by others)
Track System Colours	RAL7040
Blade Colour Exterior Only	RAL3000, RAL5003, RAL5010, RAL6009, RAL7005, RAL7012, RAL7016, RAL7021, RAL7038, RAL8014, RAL9002, RAL9005, RAL9006, RAL9007, RAL9010
Vision Windows	Aluminium frames to be colour matched to thermo panels
Alternative Vision windows within Thermo Panel	Double glazed, 630mm W OD x 305mm H OD, R60 Circular Vision windows, 325mm OD, 250mm ID Burglar Resistant Vision windows, 610mm W OD x 145mm H OD, R45
Full Width Glazing in anodised aluminium frame (in lieu of Thermo 40 Panel)	Single glazed 4mm safety glass
Alternative Full Width Glazing	20mm Double glazed, 4mm glass, scratch resistant 20mm Double glazed, 3mm Polycarbonate Insulated Rodeca Polycarbonate Glazing, Translucent (light transmission 63%) or black, grey, brown, milky white Perforated Aluminium Plate Ventilation Panels

### Alternative Track Systems (configured to available height)

Low Clearance Option	T240 Max door width 6500mm/Max door size 22m²
High Lift	T400
Vertical lift	T500 Opening height + 600mm; Max door size 35m²
Roof Angle Track System	1–30°
Springs	60,000 cycle rated springs and spring break safety device Springless Operation
Door Options	Integrated Wicket Door with closer/cylinder block (up to 6000mm door width) Lock status monitoring switch for security alarm (for the Wicket Door)
	Matching separate personnel access door
Safety	Wireless leading edge photocell 2000mm Tower Beam Safety Sensors IP67 1 set of Infrared Photocell Safety beams IP65 LED traffic lights pair (red/green) – T100 Smart required
Emergency Egress	UPS Battery Backup (Single Phase)



BLOW UP PLAN DETAIL