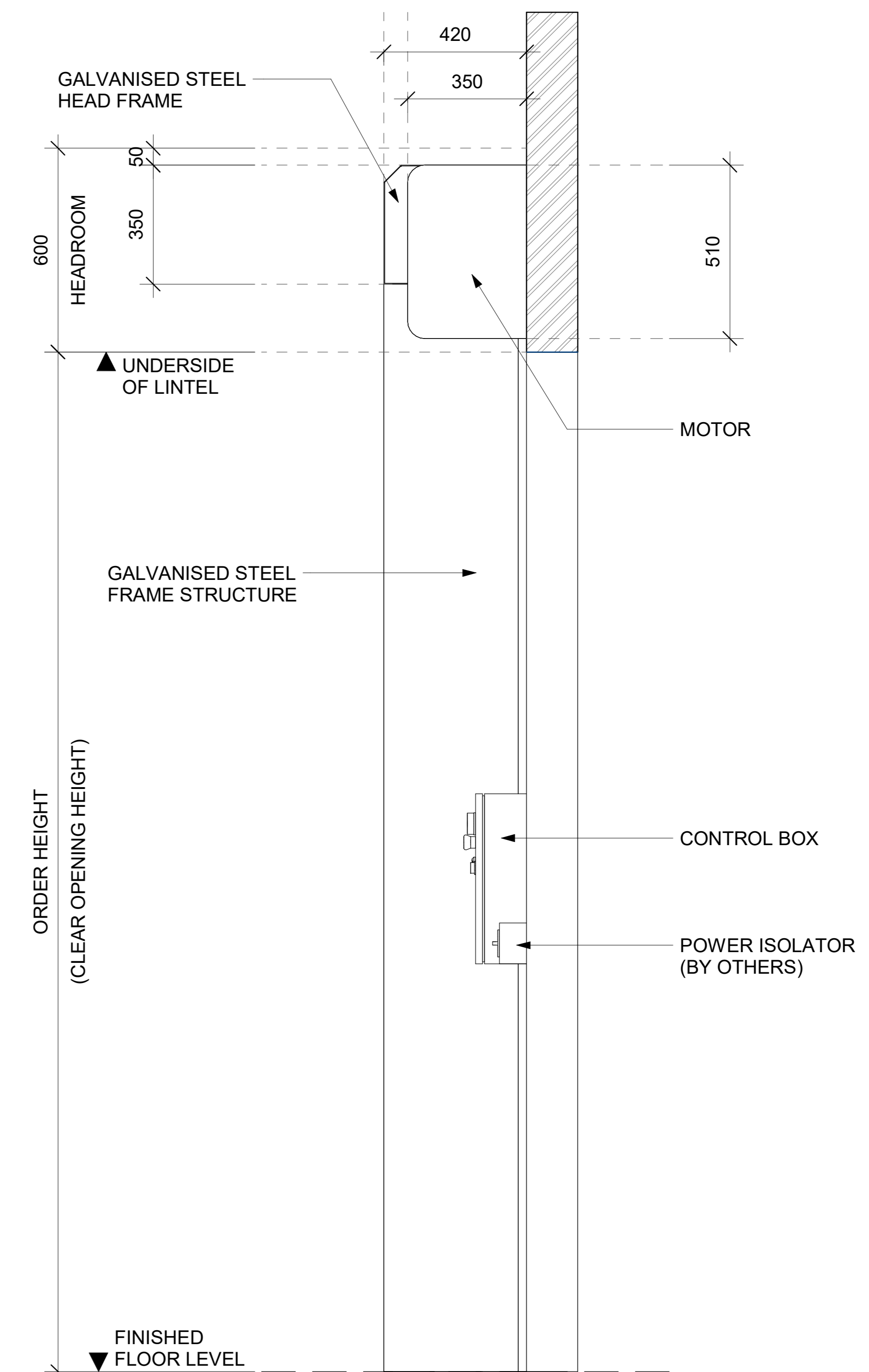
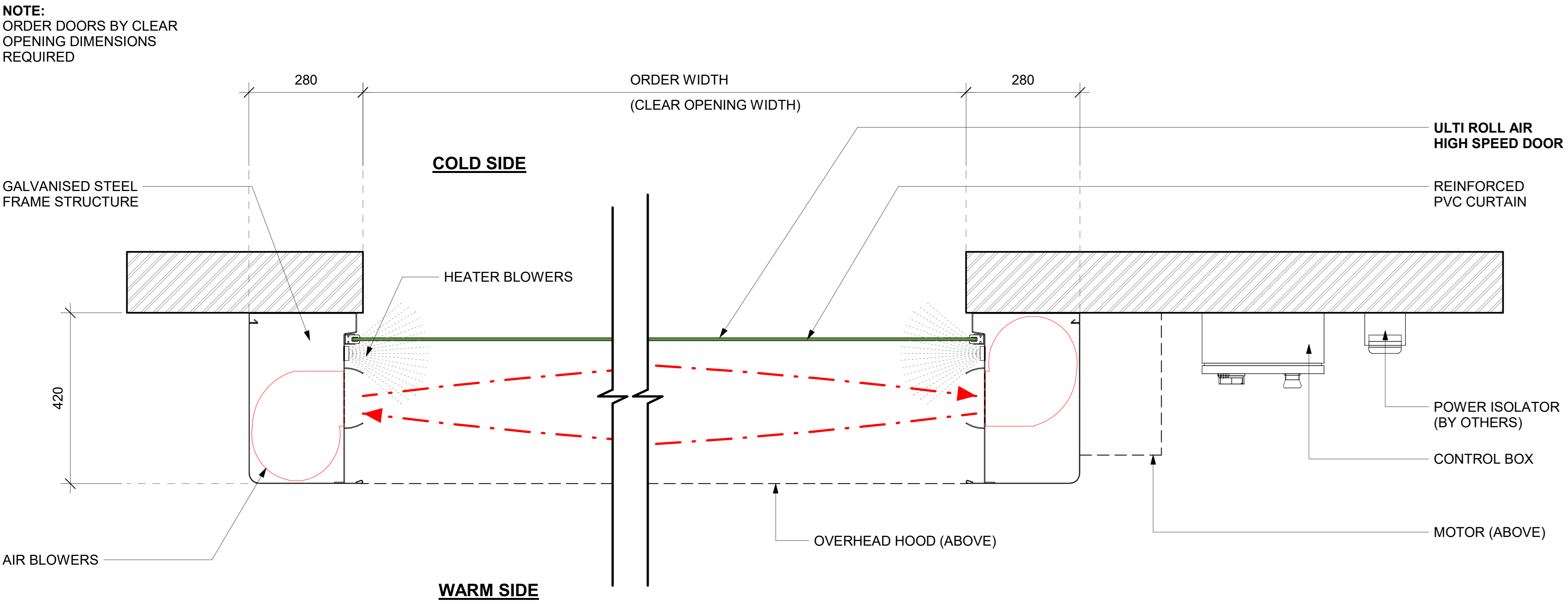


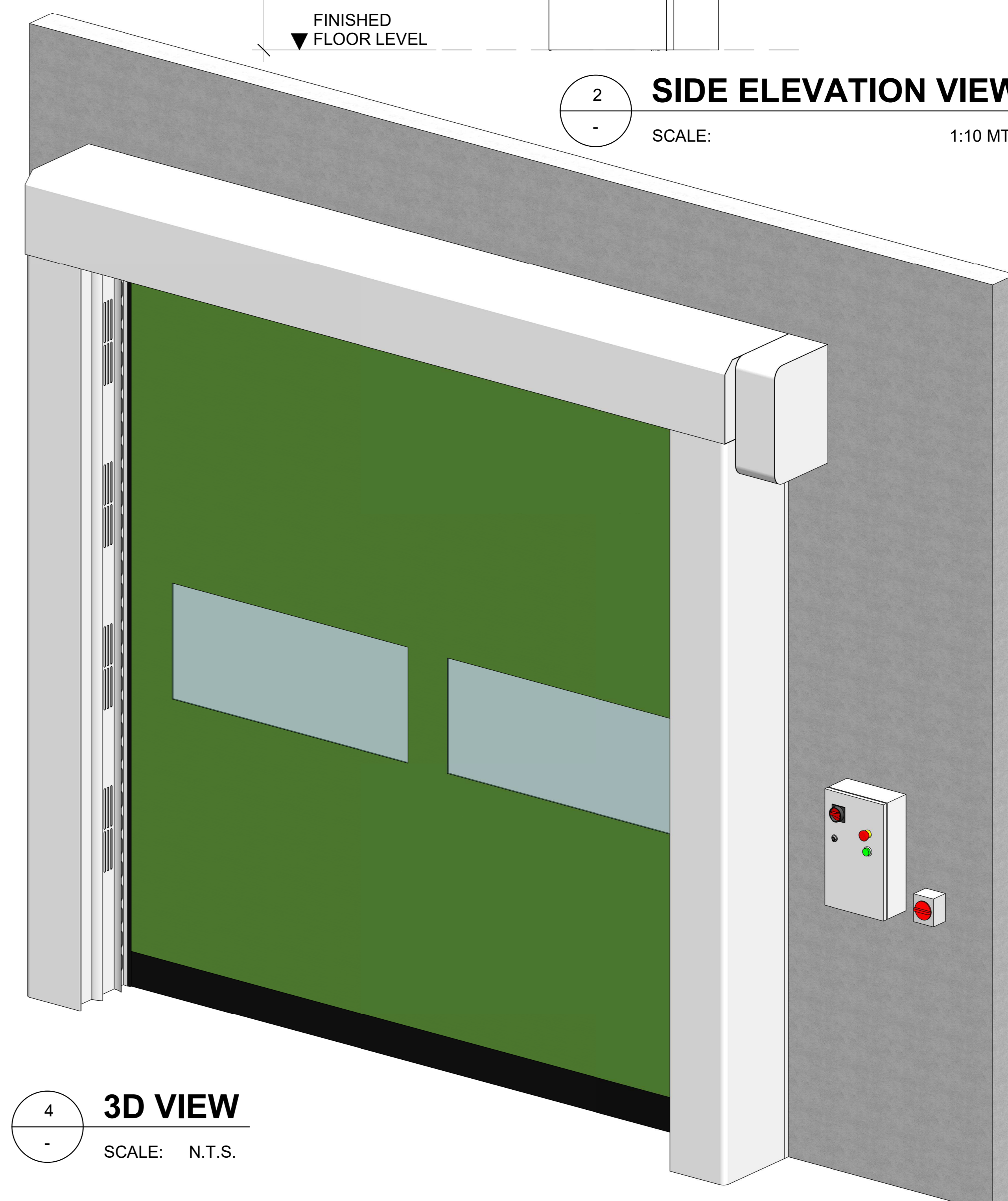
1 FRONT ELEVATION VIEW
SCALE: 1:10 MTS.



2 SIDE ELEVATION VIEW
SCALE: 1:10 MTS.



3 FLOOR PLAN VIEW
SCALE: 1:6 MTS.



© Ulti Group Ltd, 2022

NOTE:
CONTACT ULTI GROUP FOR ANY CUSTOMISATIONS AND TO DISCUSS PROJECT SPECIFIC INFORMATION

www.ultigroup.co.nz
hello@ultigroup.co.nz
Phone: 0800 807 753
105 Glover Road, Hawera, 4610

SPECIFICATIONS :

- RELEASED VERSION NO. : **VERSION 1**
- PRODUCT GROUP : **HIGH SPEED DOORS**
- PRODUCT ID : **00000**
- APPLICATION : **INTERNAL & EXTERNAL**
- STANDARD SIZE : **3500 mm WIDE x 4000 mm HIGH**
- MINIMUM SIZE : **500 mm WIDE x 600 mm HIGH**
- MAXIMUM SIZE : **4500 mm WIDE x 8000 mm HIGH**
- HEADROOM : **600 mm**
- SIDE ROOM - MOTOR SIDE : **530 mm**
- SIDE ROOM - NON MOTOR SIDE : **330 mm**
- STANDARD FRAME MATERIAL : **GALVANISED STEEL**
- STANDARD FRAME COLOUR : **RAL 9010 - WHITE**
- STANDARD CURTAIN MATERIAL : **REINFORCED PVC FABRIC CURTAIN**
- CURTAIN COLOUR (INSIDE / OUTSIDE) : **RAL 6018 - STANDARD**
- VISION PANELS : **1 ROW (STANDARD)**
- POWER SUPPLY : **3 PHASE, 400V + NEUTRAL + EARTH 15 Amp**

TITLE:
ULTI ROLL AIR HIGH SPEED DOOR

SHEET NO. : 1 OF 1
DATE : FEB. 14, 2022

DRAWING NUMBER :
ULTIROLL-AIR-001

APPROVED BY : J.PRESTIDGE
DRAWN BY : J.ENRIQUEZ
SCALE : As indicated **SHT. SIZE :** A0

*All dimensions are in millimeters unless otherwise specified