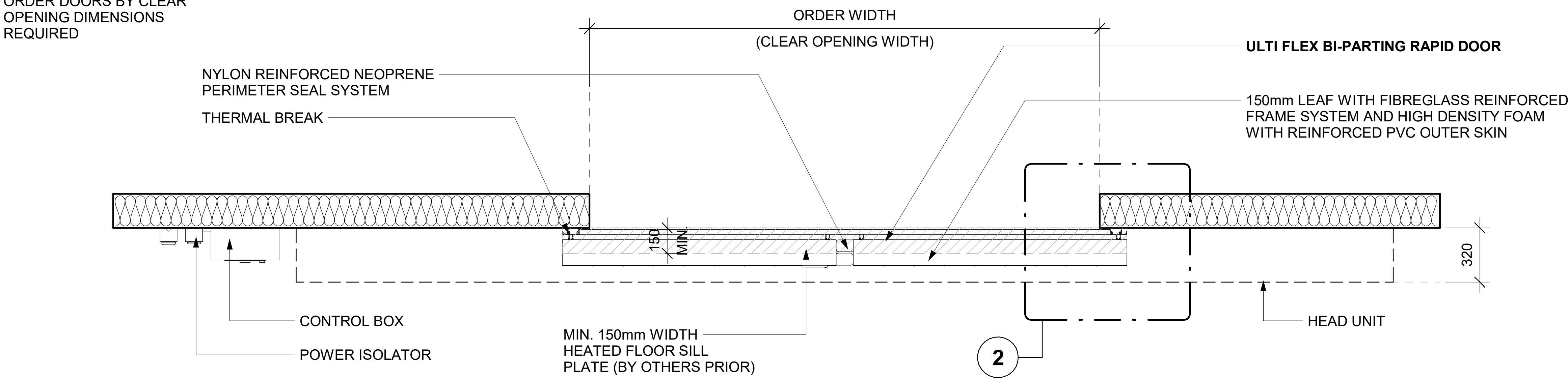
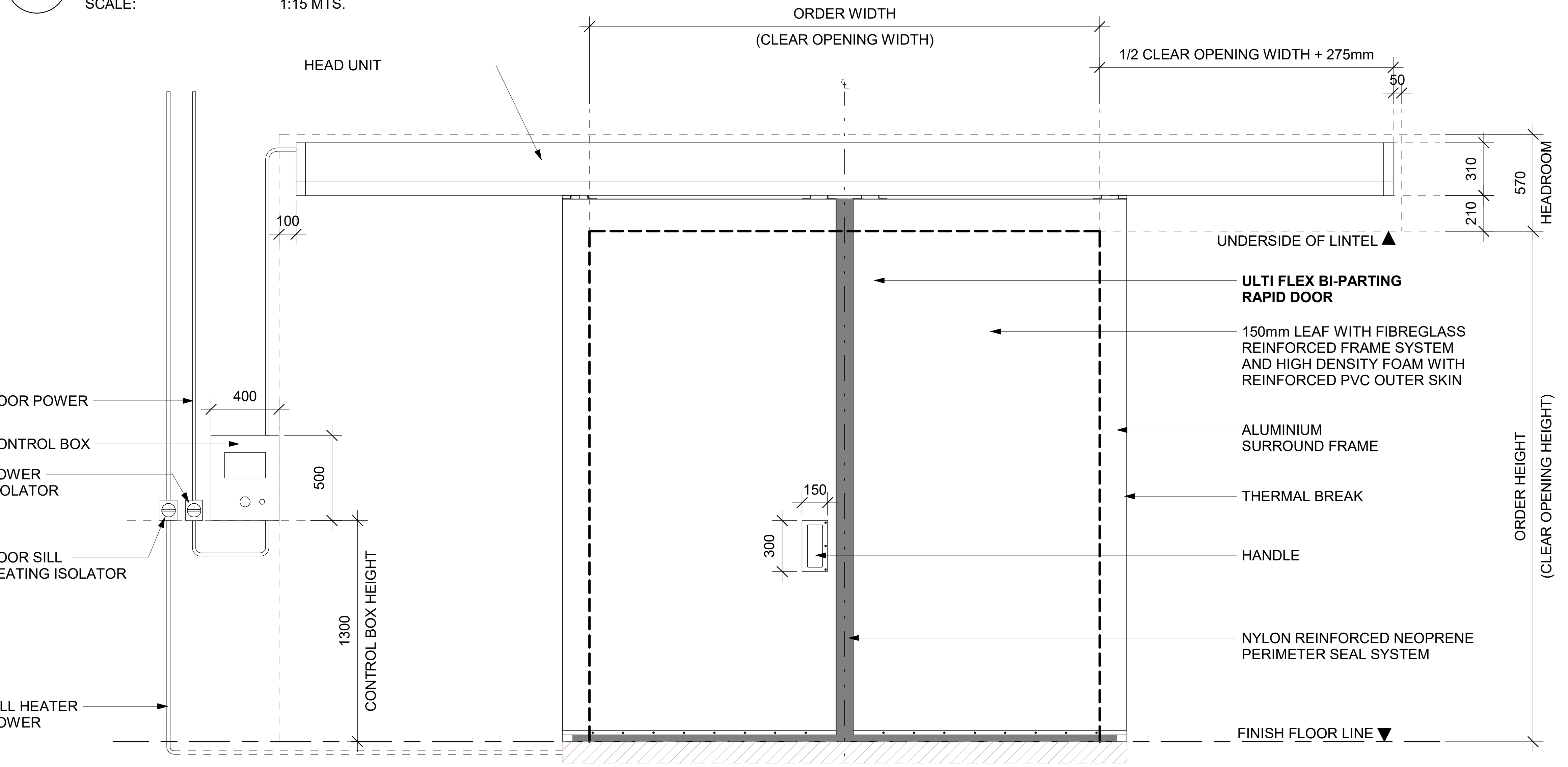


NOTE:
ORDER DOORS BY CLEAR
OPENING DIMENSIONS
REQUIRED



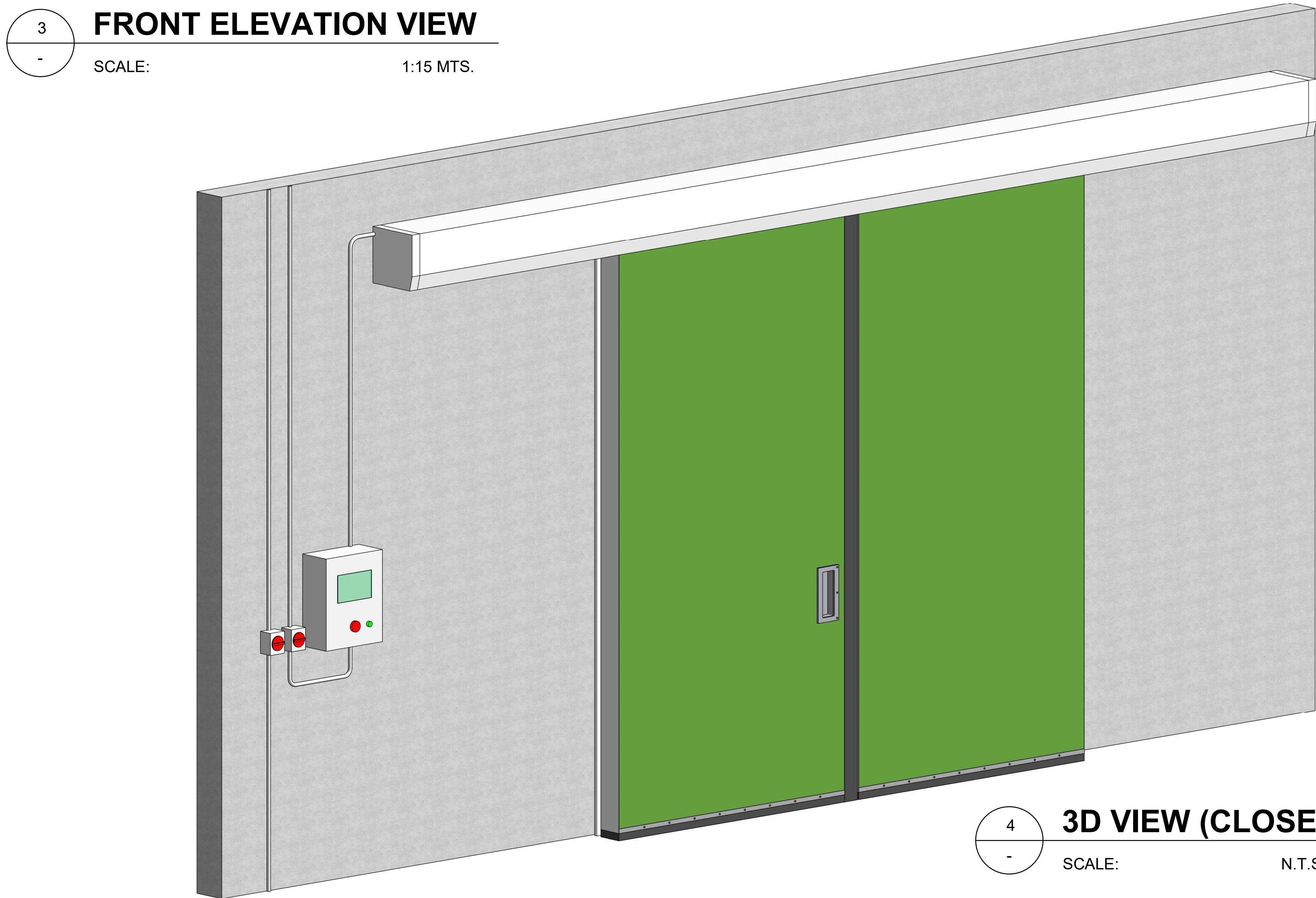
FLOOR PLAN VIEW

SCALE: 1:15 MTS.



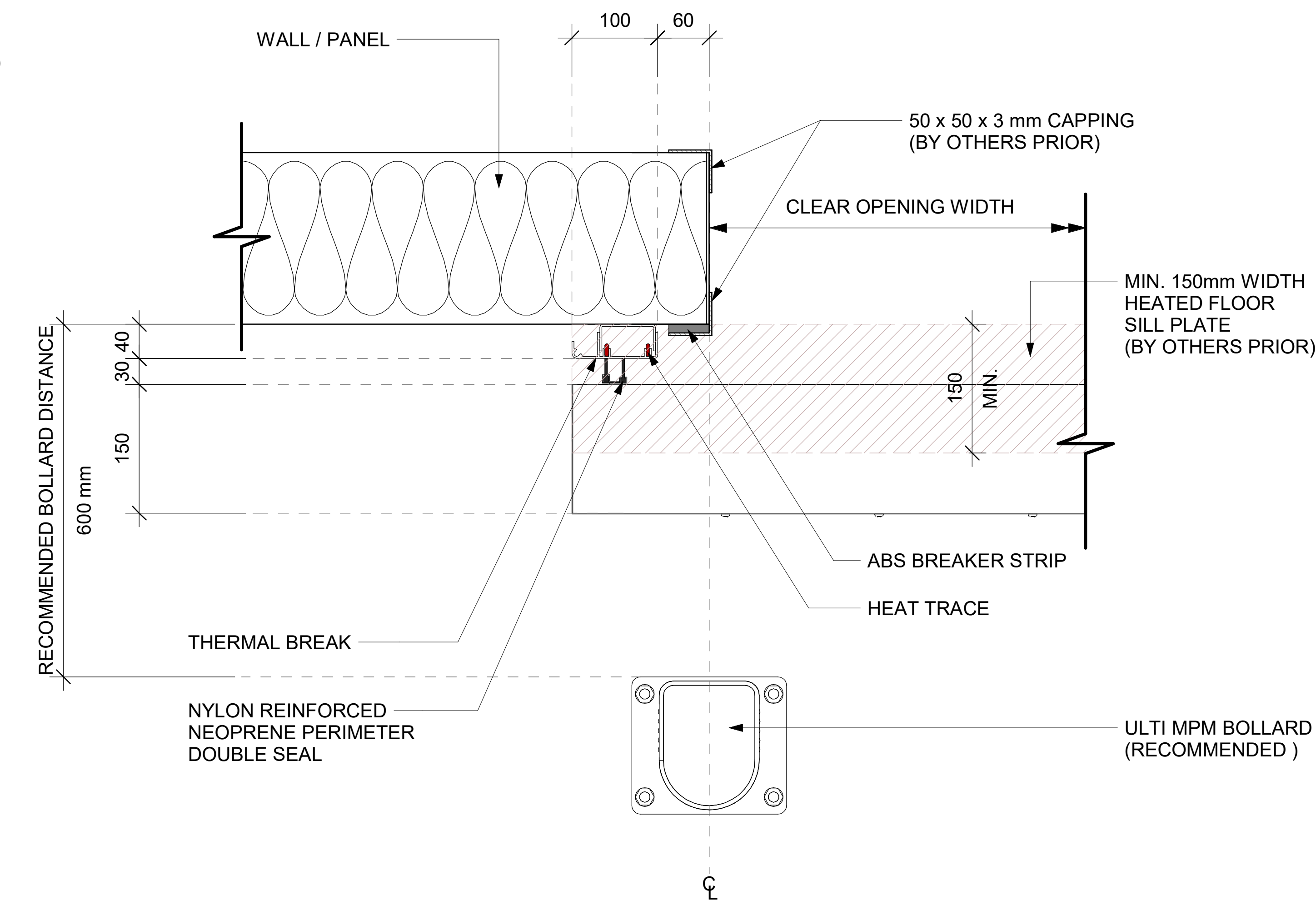
FRONT ELEVATION VIEW

SCALE: 1:15 MTS.



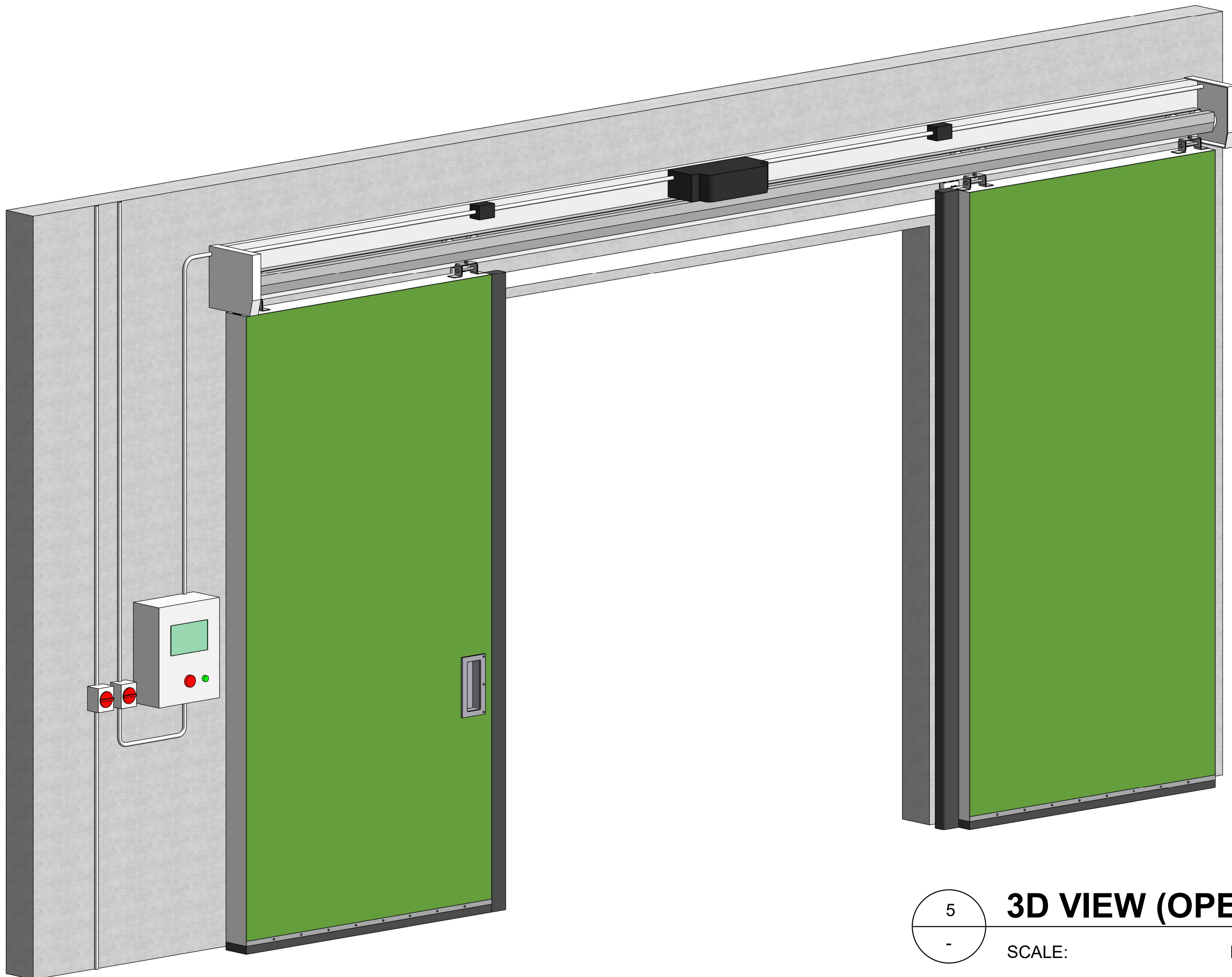
3D VIEW (CLOSE)

SCALE: N.T.S.



CROSS-SECTION THROUGH DOOR / WALL

SCALE: 1:4 MTS.



3D VIEW (OPEN)

SCALE: N.T.S.

ulti group

© Ulti Group Ltd, 2022

NOTE:

CONTACT ULTI GROUP FOR ANY
CUSTOMISATIONS AND TO DISCUSS
PROJECT SPECIFIC INFORMATION

www.ultigroup.co.nz
hello@ultigroup.co.nz
Phone: 0800 807 753
105 Glover Road, Hawera, 4610

SPECIFICATIONS :

RELEASED VERSION NO. : **VERSION 3**

PRODUCT GROUP : **HIGH SPEED DOORS**

PRODUCT ID : **00000**

APPLICATION : **INTERNAL & EXTERNAL**

STANDARD SIZE : **2400 mm WIDE x 3600 mm HIGH**

MINIMUM SIZE : **1200 mm WIDE x 2000 mm HIGH**

MAXIMUM SIZE : **3200 mm WIDE x 5400 mm HIGH**

HEADROOM : **570 mm**

SIDE ROOM - MOTOR SIDE :

1/2 CLEAR WIDTH + 275 mm

SIDE ROOM - NON MOTOR SIDE :

1/2 CLEAR WIDTH + 275 mm

STANDARD FRAME MATERIAL : **ALUMINIUM SURROUND FRAME**

STANDARD FRAME COLOUR : **MILL FINISH ALUMINIUM**

HEAD UNIT MATERIAL : **GALVANISED STEEL**

HEAD UNIT COLOUR : **RAL 9002 (STANDARD)**

STANDARD CURTAIN MATERIAL : **REINFORCED PVC OUTER SKIN**

CURTAIN COLOUR (INSIDE / OUTSIDE) : **RAL 6018 (STANDARD)**

POWER SUPPLY : **3 PHASE, 400V + NEUTRAL + EARTH 15 Amp**

HEATING POWER SUPPLY : **SINGLE PHASE, 230V + NEUTRAL + EARTH 20 Amp**

WORKING TEMPERATURE : **FROM -40°C UP TO 50°C**

* PLEASE NOTE: DUE TO WELL SEALED NATURE OF THE DOOR SYSTEM, THE PANELS MAY BOW INTO THE DOOR OPENING IF SUCTION PRESSURE IS PRESENT WITHIN THE COLDSTORE, THIS IS NORMAL AND DOES NOT AFFECT DOOR OPERATION OR USE.

TITLE:

ULTI FLEX BI-PARTING RAPID DOOR

SHEET NO. :

1 OF 1

DATE :

JAN. 24, 2022

DRAWING NUMBER :

ULTIFLEX-BP-001

APPROVED BY : J.PRESTIDGE

DRAWN BY : J.ENRIQUEZ

SCALE : As indicated

SHT. SIZE : A0

*All dimensions are in millimeters unless otherwise specified