

**NOTE:**

CONTACT ULTI GROUP FOR ANY  
CUSTOMISATIONS AND TO DISCUSS  
PROJECT SPECIFIC INFORMATION

www.ultigroup.co.nz  
hello@ultigroup.co.nz  
Phone: 0800 807 753  
105 Glover Road, Hawera, 4610

**SPECIFICATIONS :**

RELEASED VERSION NO. : 25.1.0

PRODUCT GROUP : HIGH SPEED DOORS

APPLICATION : INTERNAL

STANDARD SIZE : 4000 mm WIDE x 3500 mm HIGH

MINIMUM SIZE : 2000 mm WIDE x 2000 mm HIGH

MAXIMUM SIZE : 6000 mm WIDE x 7000 mm HIGH

HEADROOM : 900 mm

SIDE ROOM - MOTOR SIDE : 730 mm

SIDE ROOM - NON MOTOR SIDE : 310 mm

STANDARD FRAME  
MATERIAL : GALVANISED STEEL

STANDARD FRAME  
COLOUR : GALVANISED FINISH

STANDARD CURTAIN  
MATERIAL : 900 gr / m<sup>2</sup> REINFORCED  
PVC FABRIC CURTAIN

CURTAIN COLOUR  
(INSIDE / OUTSIDE) : RAL 6018 - STANDARD

VISION PANELS : NONE

POWER SUPPLY : 3 PHASE, 400V + NEUTRAL +  
EARTH 20 Amp (BY OTHERS)

**NOTES :**

- TO BE VIEWED IN CONJUNCTION WITH PRODUCT  
SPECIFICATION AND FIXING LAYOUT DRAWING.

- FINISHED FLOOR LEVEL MUST BE 100% FLAT  
AND FREE OF OBSTRUCTIONS IN DOOR  
MOVEMENT AND CLEARANCE ZONE

 - CLEARANCE ZONE

 - BY OTHERS PRIOR

**TITLE:**

**ULTI DUOTHERM  
AIR DOOR**

**SHEET NO. :**

1 OF 1

**DATE :**

JUNE 3, 2025

**DRAWING NUMBER :**

DUOTHERM-AIR-EU-001

**APPROVED BY :**

S.PRESTIDGE

**DRAWN BY :**

J.ENRIQUEZ

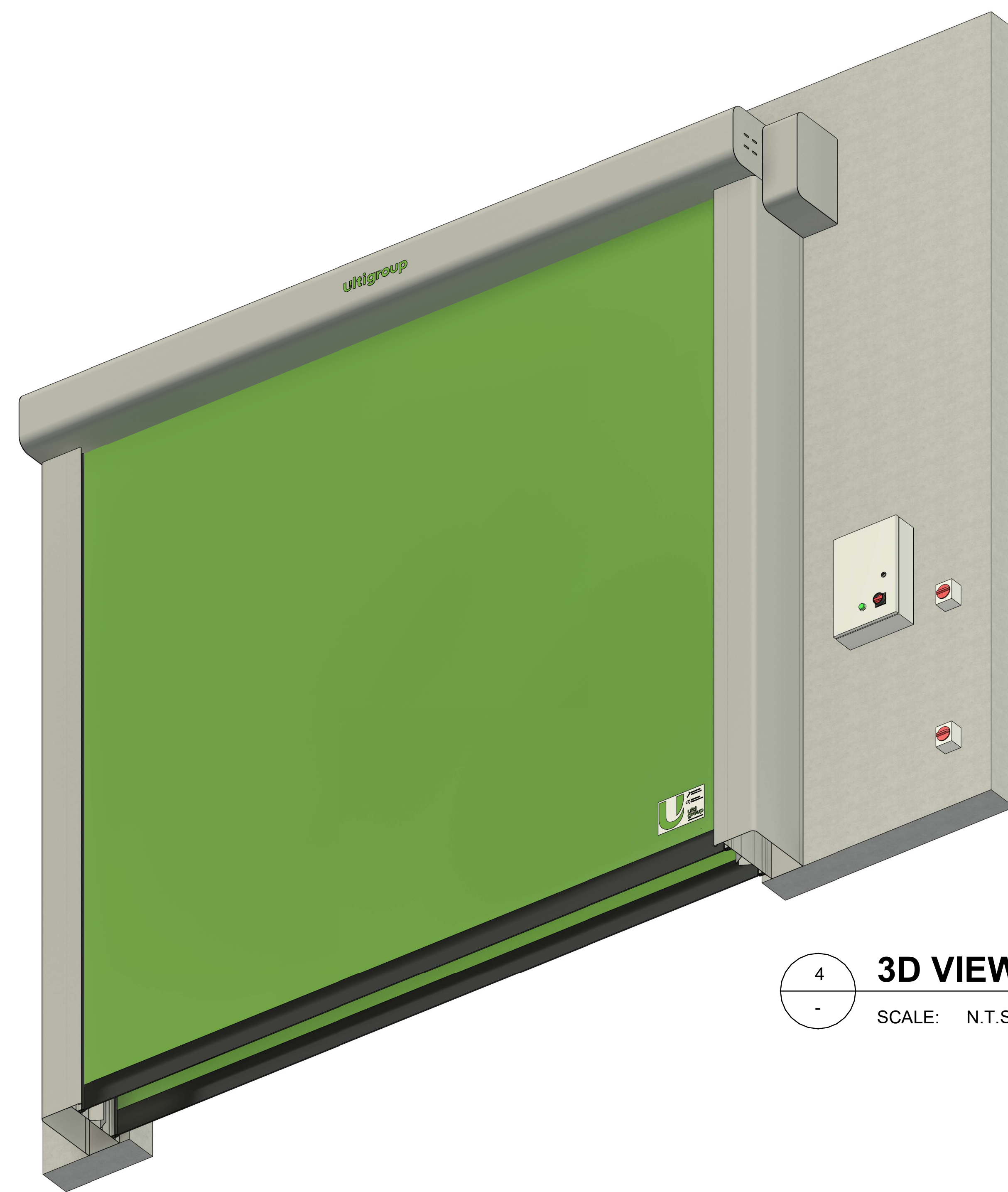
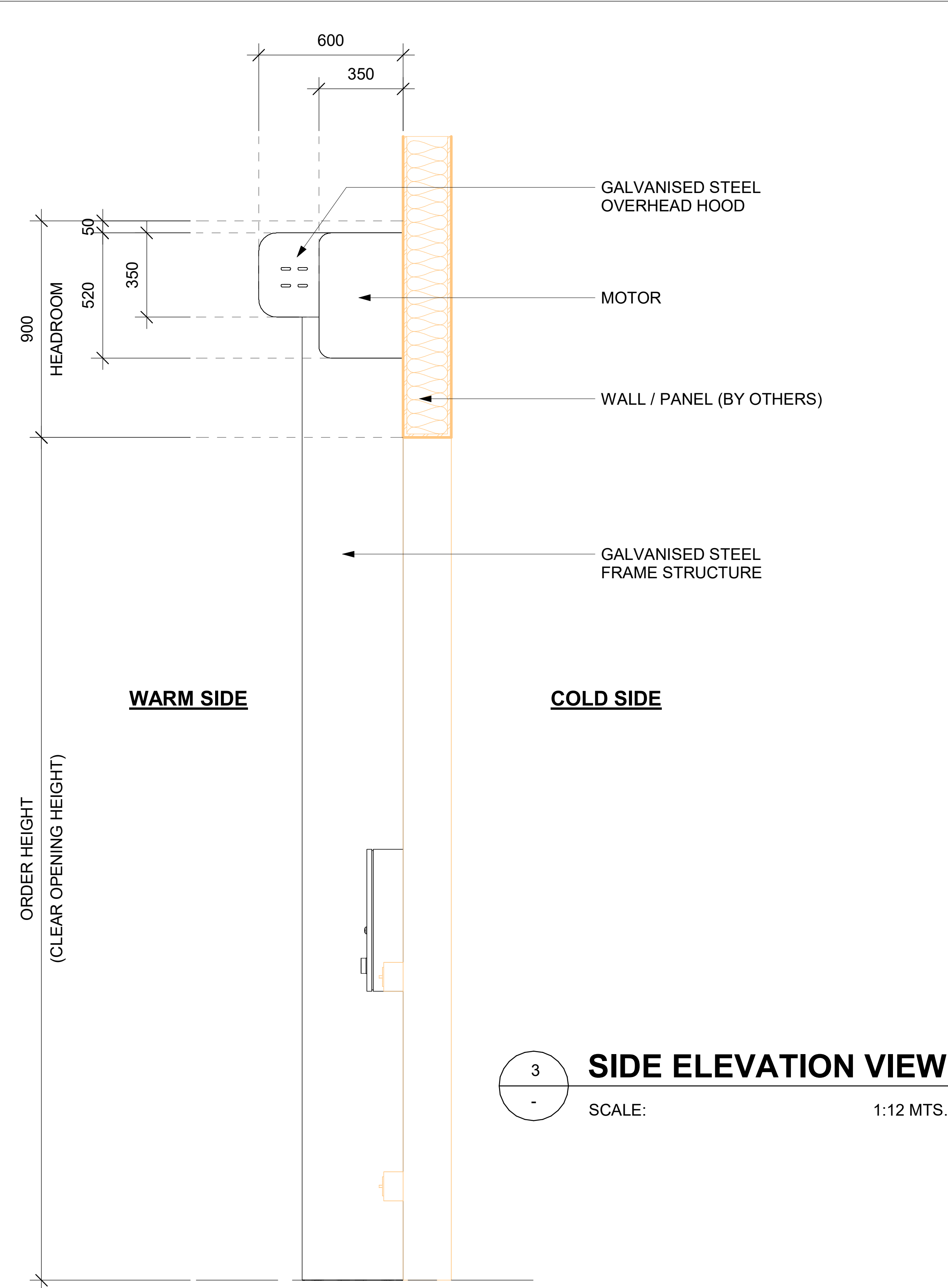
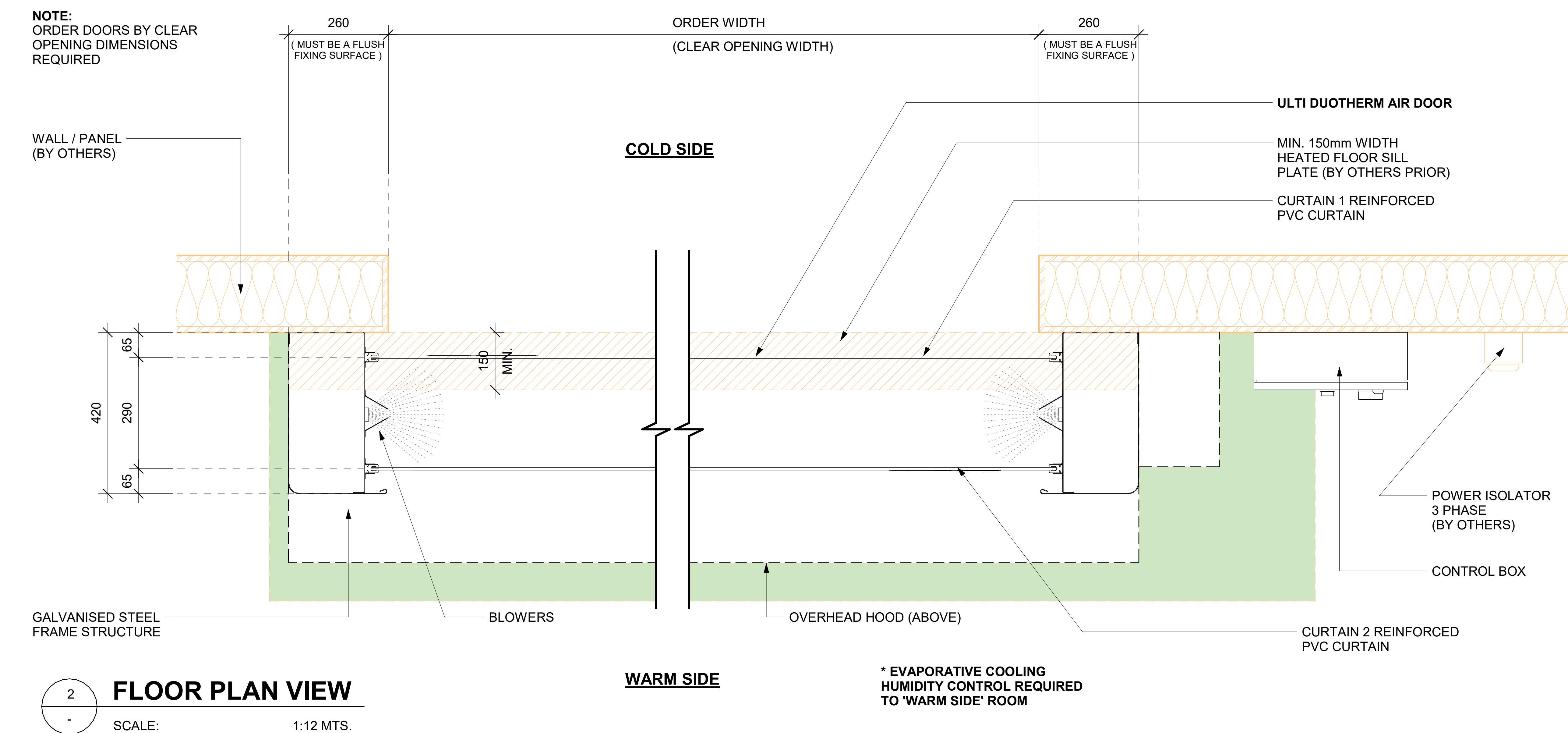
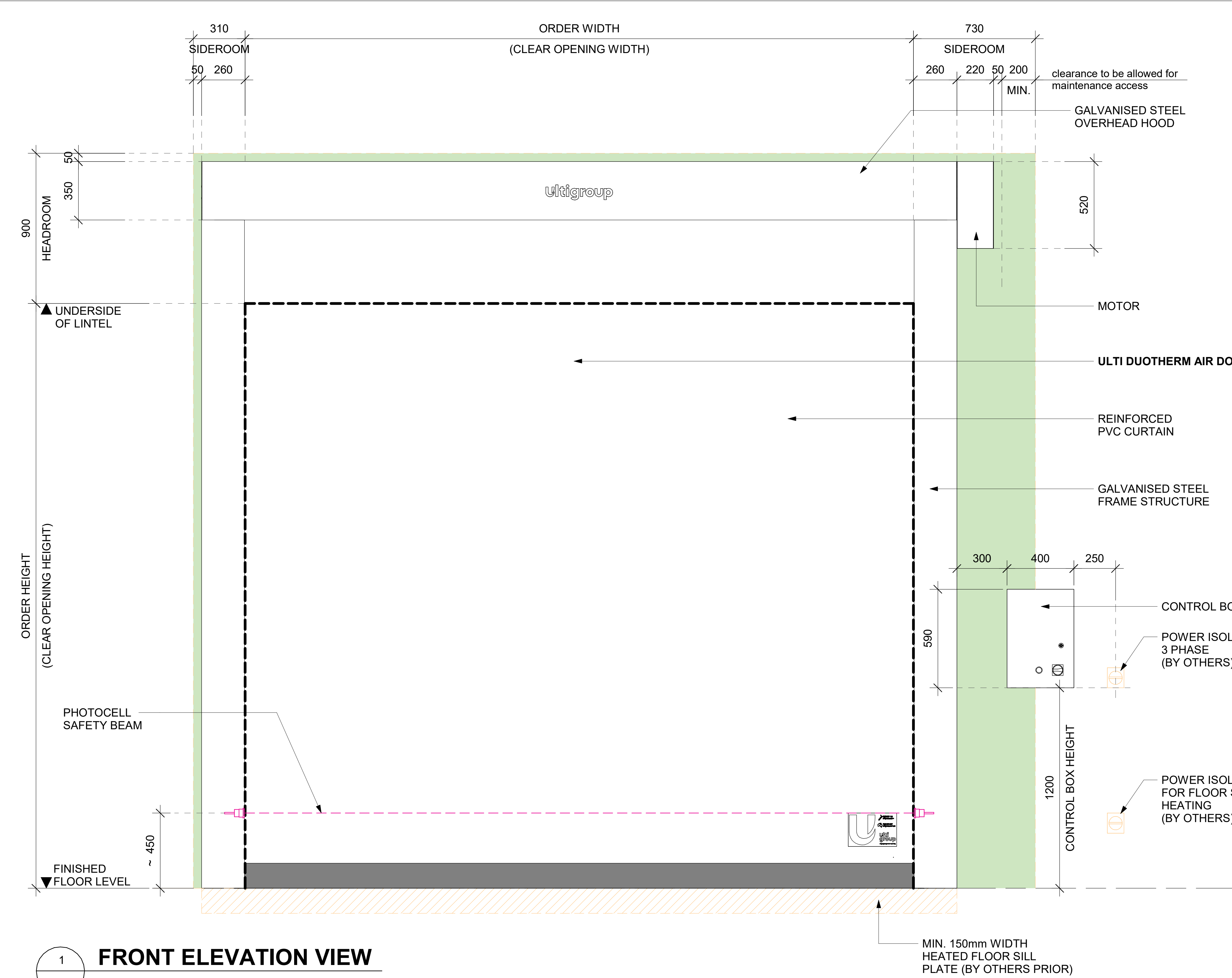
**SCALE :**

As indicated

**SHT. SIZE :**

A0

\*All dimensions are in millimeters unless otherwise specified



\* EVAPORATIVE COOLING  
HUMIDITY CONTROL REQUIRED  
TO 'WARM SIDE' ROOM