

NOTE:

CONTACT ULTI GROUP FOR ANY CUSTOMISATIONS AND TO DISCUSS PROJECT SPECIFIC INFORMATION

www.ultigroup.co.nz
 hello@ultigroup.co.nz
 Phone: 0800 807 753
 105 Glover Road, Hawera, 4610

SPECIFICATIONS :

RELEASED VERSION NO. : **VERSION 1**

PRODUCT GROUP : **HIGH SPEED DOORS**

PRODUCT ID : **00000**

APPLICATION : **INTERNAL ONLY**

STANDARD SIZE : **2000 mm WIDE x 3500 mm HIGH**

MINIMUM SIZE : **500 mm WIDE x 600 mm HIGH**

MAXIMUM SIZE : **6500 mm WIDE x 6500 mm HIGH**

HEADROOM : **610 mm**

SIDE ROOM - MOTOR SIDE : **350 mm**

SIDE ROOM - NON MOTOR SIDE : **140 mm**

STANDARD FRAME MATERIAL : **STAINLESS STEEL AISI:316**

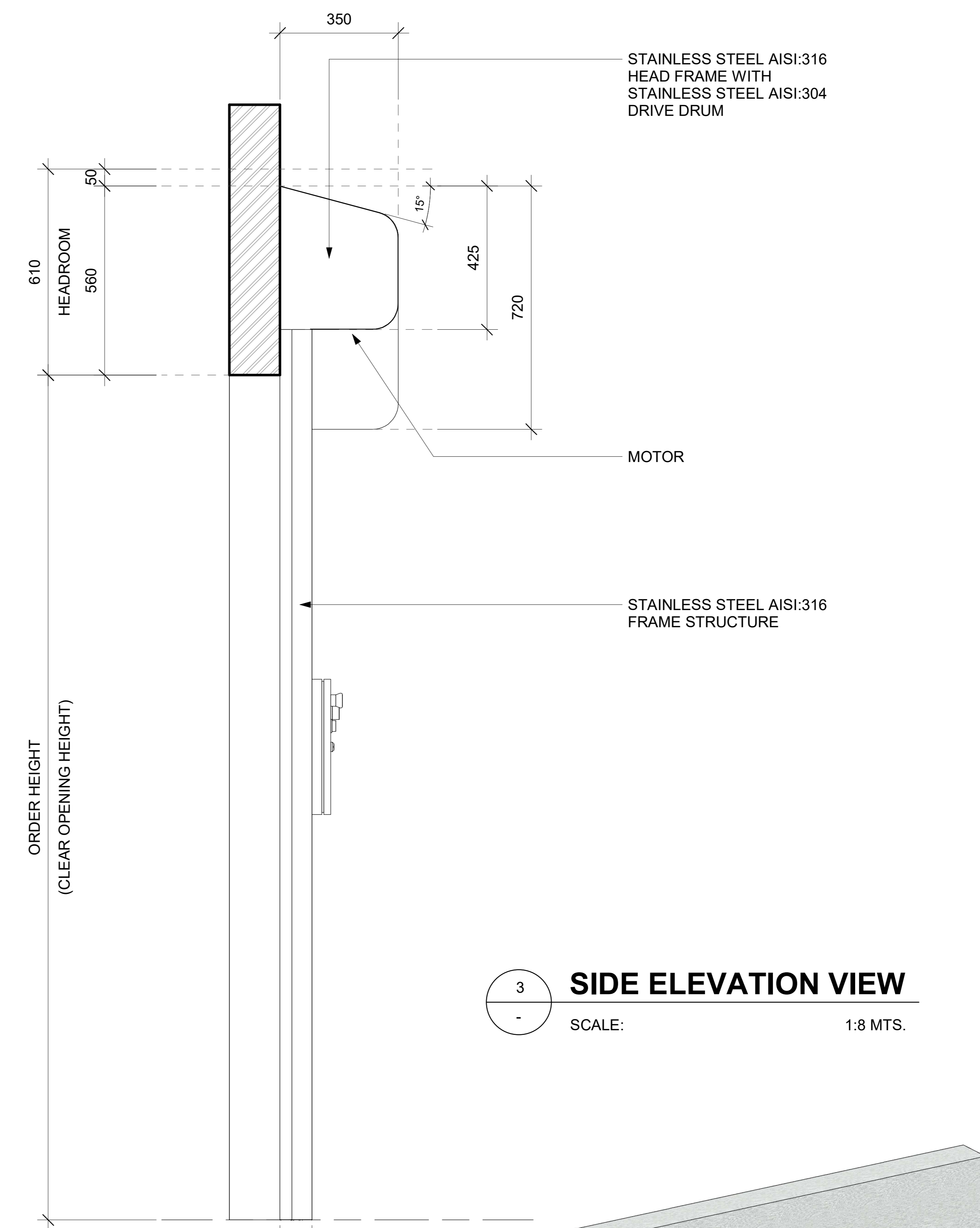
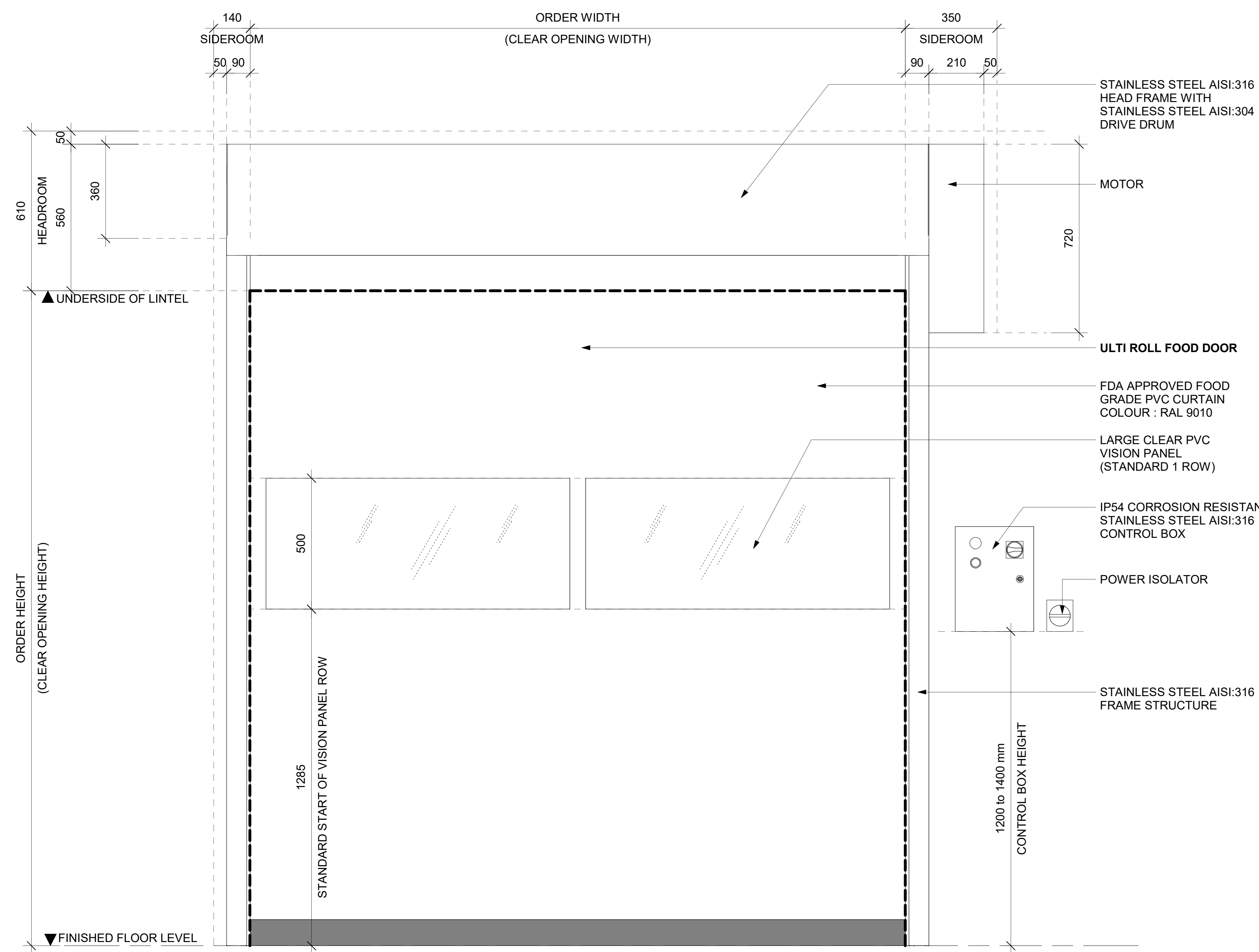
STANDARD FRAME COLOUR : **STAINLESS STEEL**

STANDARD CURTAIN MATERIAL : **FDA APPROVED FOOD GRADE PVC CURTAIN 1700 gr/m²**

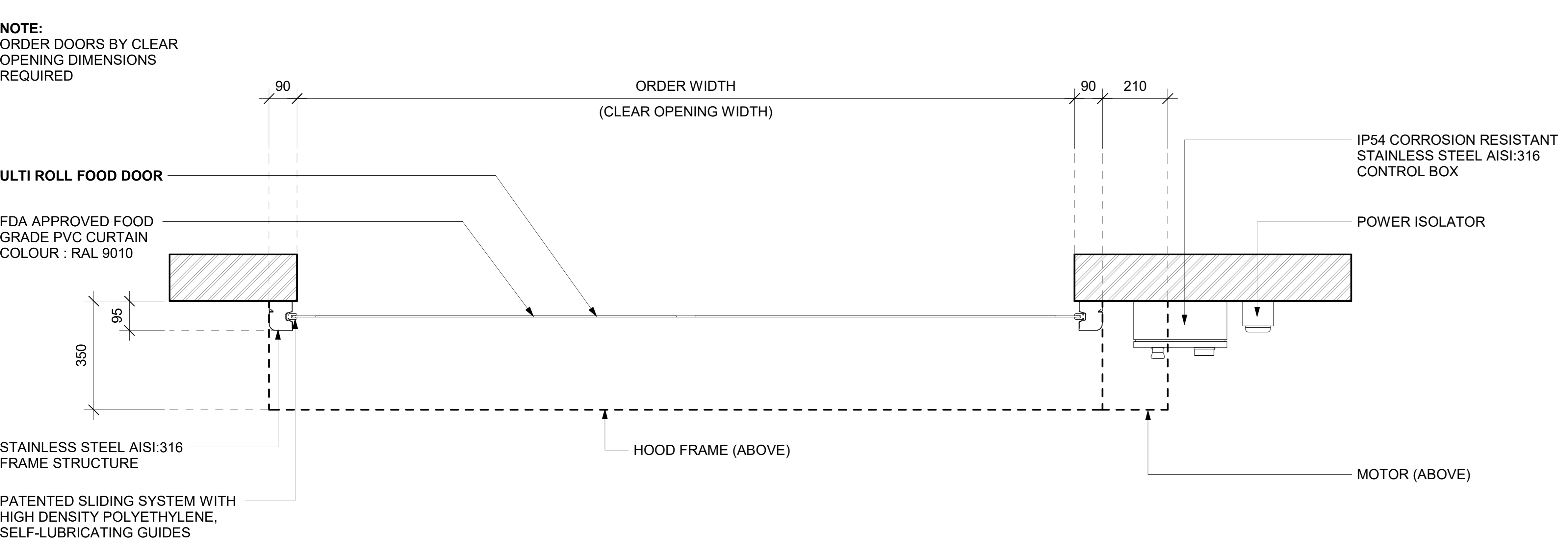
CURTAIN COLOUR (INSIDE / OUTSIDE) : **RAL 9010 - STANDARD**

VISION PANELS : **1 ROW (STANDARD)**

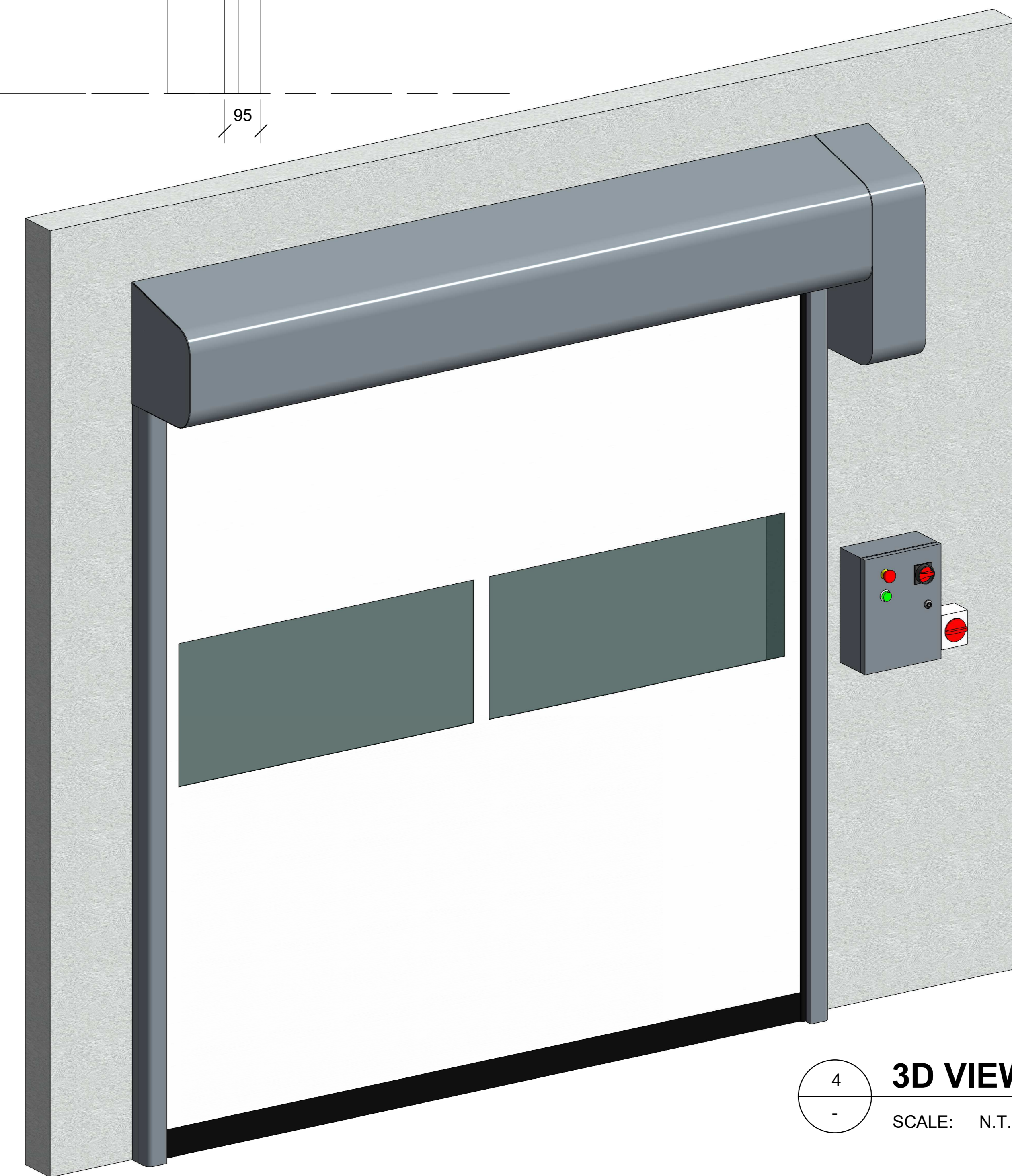
POWER SUPPLY : **SINGLE PHASE, 240V 15 Amp**



1 FRONT ELEVATION VIEW
 SCALE: 1:8 MTS.



2 FLOOR PLAN VIEW
 SCALE: 1:8 MTS.



4 3D VIEW
 SCALE: N.T.S.

TITLE:

ULTI ROLL FOOD HIGH SPEED DOOR

SHEET NO. : 1 OF 1 **DATE :** APRIL 7, 2021

DRAWING NUMBER :

ULTIROLL-FOOD-001

APPROVED BY : J.PRESTIDGE
DRAWN BY : J.ENRIQUEZ

SCALE : As indicated **SHT. SIZE :** A0

*All dimensions are in millimeters unless otherwise specified