

NOTE:

CONTACT ULTI GROUP FOR ANY CUSTOMISATIONS AND TO DISCUSS PROJECT SPECIFIC INFORMATION

www.ultigroup.co.nz
hello@ultigroup.co.nz
Phone: 0800 807 753
105 Glover Road, Hawera, 4610

SPECIFICATIONS :

RELEASED VERSION NO. : **VERSION 1**

PRODUCT GROUP : **HIGH SPEED DOORS**

PRODUCT ID : **00000**

APPLICATION : **INTERNAL & EXTERNAL**

STANDARD SIZE : **4000 mm WIDE x 3500 mm HIGH**

MINIMUM SIZE : **2000 mm WIDE x 2000 mm HIGH**

MAXIMUM SIZE : **6000 mm WIDE x 7000 mm HIGH**

HEADROOM : **1000 mm**

SIDE ROOM - MOTOR SIDE : **450 mm**

SIDE ROOM - NON MOTOR SIDE : **180 mm**

STANDARD FRAME MATERIAL : **GALVANISED STEEL**

STANDARD FRAME COLOUR : **RAL 9010 - WHITE**

STANDARD CURTAIN MATERIAL : **3.5mm INSULATED REINFORCED PVC FABRIC CURTAIN**

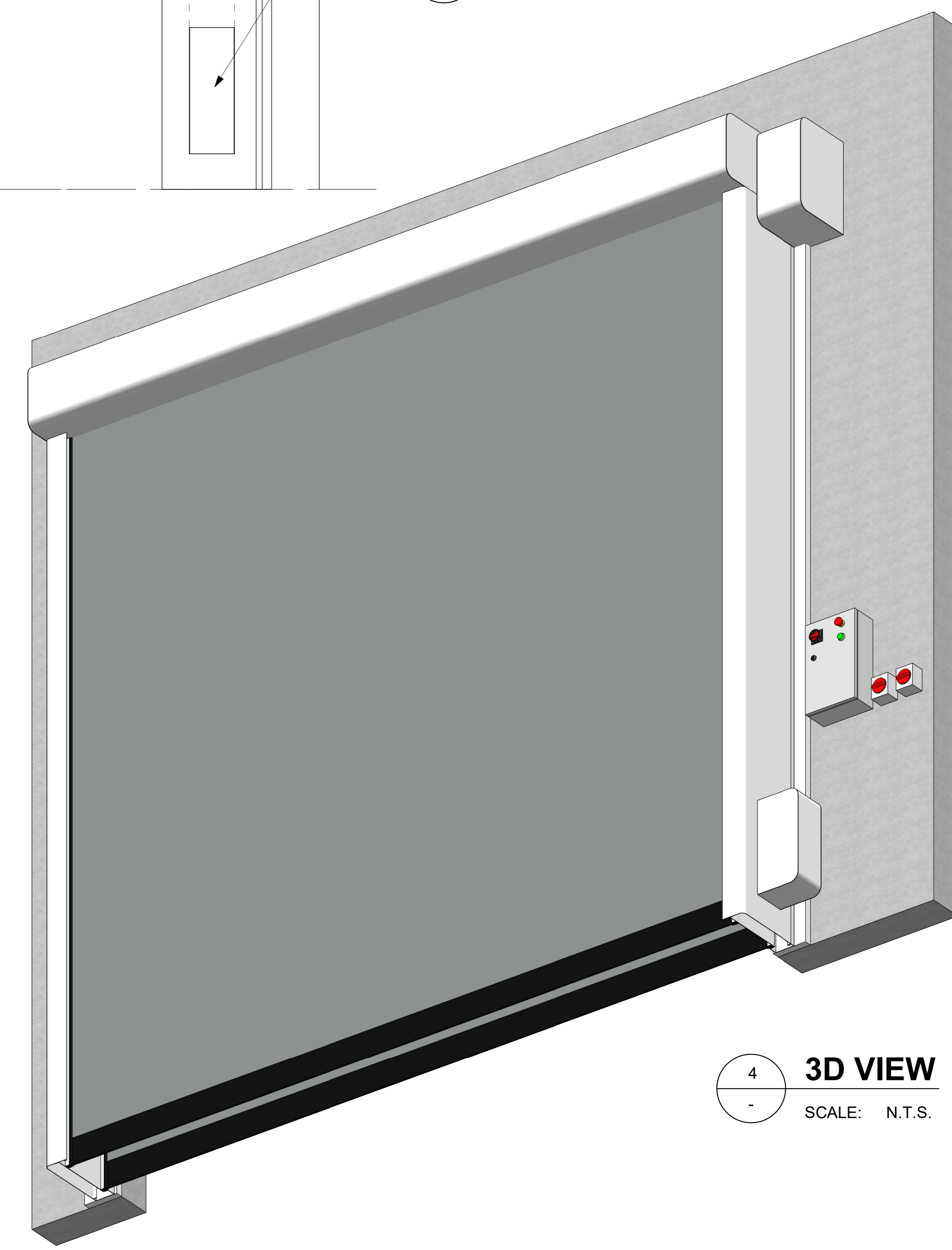
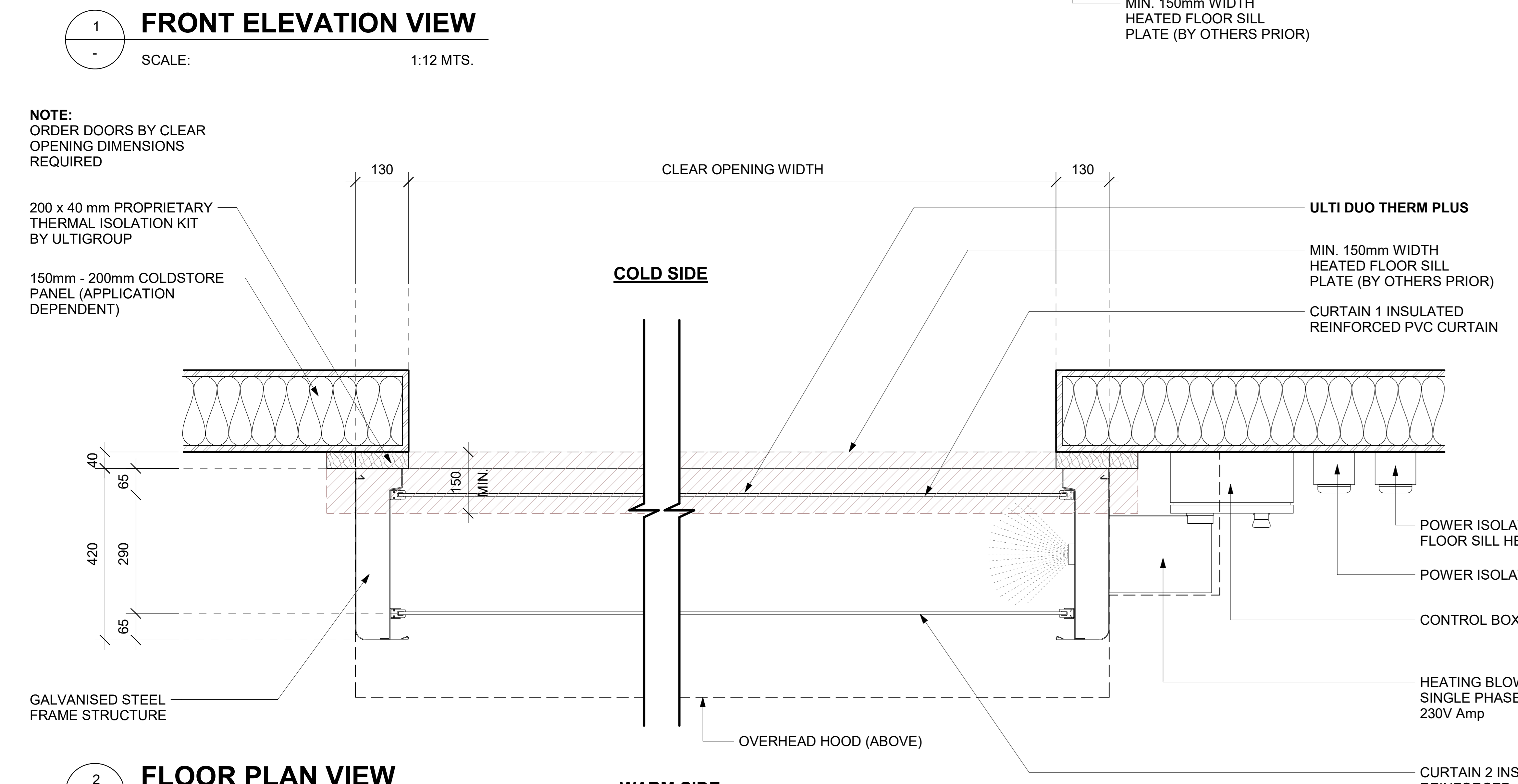
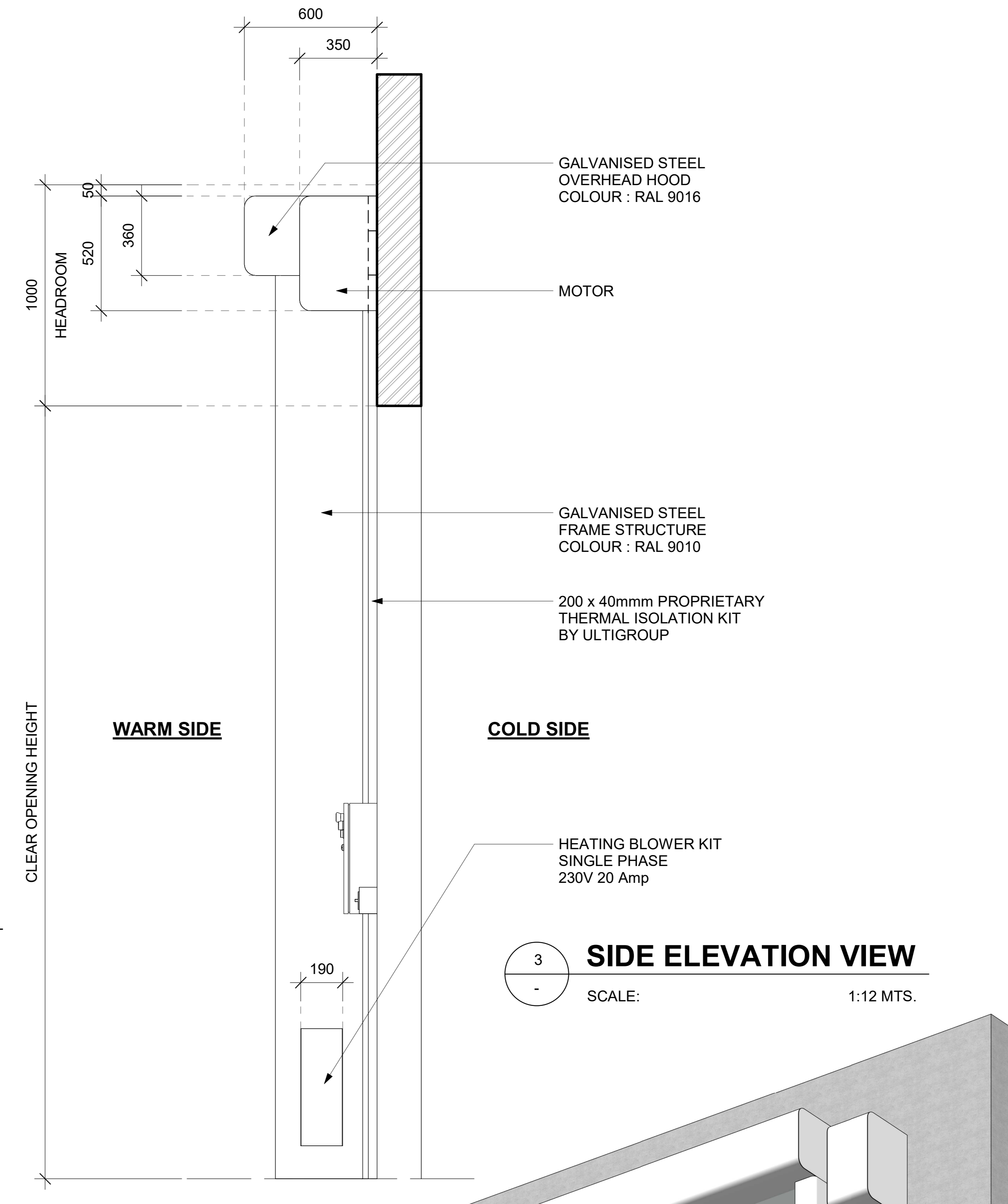
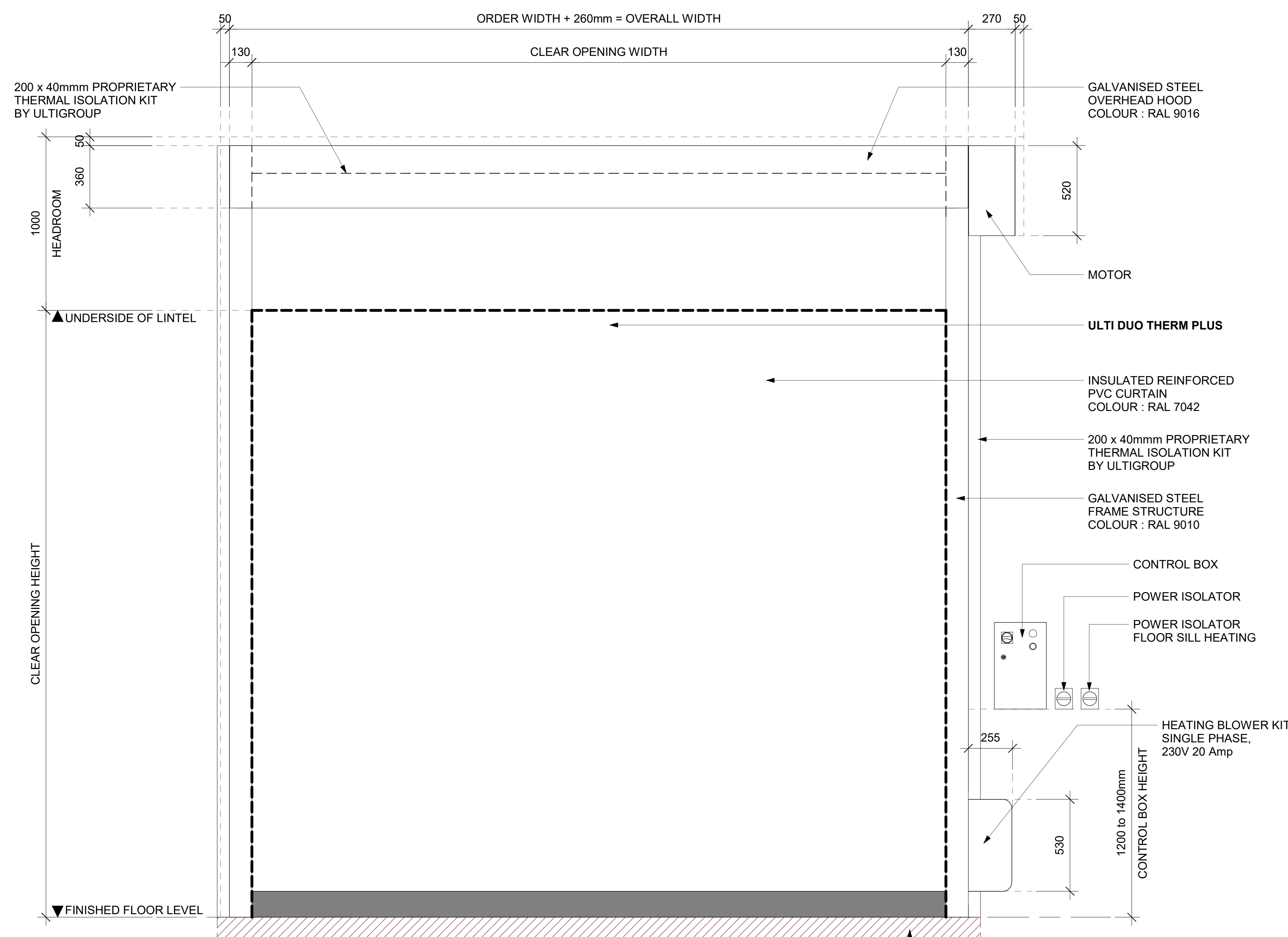
CURTAIN COLOUR (INSIDE / OUTSIDE) : **RAL 7042 - TRAFFIC GREY**

VISION PANELS : **NONE**

POWER SUPPLY : **3 PHASE, 400V + NEUTRAL + EARTH 15 Amp**

HEATING POWER SUPPLY : **SINGLE PHASE, 230V 20 Amp**

WORKING TEMPERATURE : **SUB-ZERO TEMPERATURES FROM -1°C DOWN TO -25°C**



TITLE:

ULTI DUO THERM PLUS HIGH SPEED DOOR

SHEET NO. :

1 OF 1

DATE :

SEPT. 14, 2020

DRAWING NUMBER :

FRIGO2-PLUS-001

APPROVED BY : J.PRESTIDGE

DRAWN BY : J.ENRIQUEZ

SCALE : As indicated

SHT. SIZE : A0

*All dimensions are in millimeters unless otherwise specified

* EVAPORATIVE COOLING HUMIDITY CONTROL REQUIRED TO 'WARM SIDE' ROOM