



ulti
group

PROTECTING WHAT MATTERS

YOUR TRUSTED PARTNER IN
Warehouse
Safety

What Matters To You, Matters To Us.

When it comes to protecting your warehouse, people, and product flow, you need more than barriers – you need a trusted expert with smart solutions that flex with your needs.

At Ulti Group, what matters to you, matters to us, and we've got the experience to make sure you get the perfect solution, installed exactly right, that will protect your people, products and profits.

"SOLUTIONS YOU CAN TRUST"





OUR MISSION IS TO PARTNER WITH INDUSTRY TO CONSERVE ENERGY, INCREASE EFFICIENCY AND SAVE LIVES THROUGH QUALITY AND INNOVATIVE SOLUTIONS.

Ever since Ulti Group was founded in 1993, we have been protecting what matters most to our customers.

With innovative door systems, loading solutions, and warehouse protection products like MPM flexible bollards, we help businesses across a wide range of industries improve efficiency, lift productivity, and reduce both cost and risk – right across New Zealand and Australia.

But, let's start with what we can do for your warehouse...

What does that mean for you?

We partner with you to create safer, smarter warehouse environments that protect what matters most – your people, products, and profits.

It's not just about installing a few bollards and calling it a day. It's about understanding how your team and equipment move, identifying risk zones, and tailoring the right protection where it counts.

Our experts work alongside you to design a solution that fits your space and keeps your operations flowing – minimising damage, reducing downtime, and giving you peace of mind from day one.

Don't Let Your Business Take the Hit

Leading warehouse operations need to run efficiently, stay safe and compliant, and protect both people and product – all while keeping damage and downtime to a minimum.

But getting the right protection in place isn't always straightforward. As health and safety requirements grow, the cost of repairs and equipment damage adds up – and the movement of people, forklifts, and goods keeps getting faster. So how do you create a safer, more efficient warehouse without slowing things down?

We've designed this guide to answer the most common questions we hear about warehouse protection, including:

- The real cost of unprotected areas
- How flexible barriers can reduce damage and downtime
- Where impact risks are highest in a warehouse
- The difference between flexible and rigid protection
- What to look for when choosing barrier systems
- How to improve traffic flow and visibility
- The best barrier solutions for high-traffic, shared zones

Let's get started.



THE COST OF DOING NOTHING

A lack of proper impact protection in high-traffic zones can lead to far more than just a few bumps and scrapes.

Without the right barriers in place, the hidden costs can quickly pile up – from equipment downtime and product damage to safety risks and skyrocketing maintenance bills. And with rising operational costs and increasing compliance demands, the pressure is only growing.

The business cost

- Frequent damage to racking, walls, and equipment.
- Unnecessary repairs and rising maintenance costs.
- Safety risks to staff and increased incident reports.
- Disrupted workflows and unplanned downtime.
- Reduced product quality from mishandling or impact.
- A negative impression on audits and site visitors.
- Long-term wear on MHE due to avoidable collisions

The Ultimate Impact Protection Bollard & Barrier Range



Protect your people and equipment with PVC Impactable barrier that is shock-absorbent, modular and eco-friendly

You can easily assemble them to create any access way you need. They come in standard or custom sizes to suit your space.

- ✓ **PVC Impactable barriers:** the flexible, hygienic and eco-friendly barriers that outperform steel in the food industry
- ✓ **Shock-absorbent and scratch-resistant:** no dents, no rust, no maintenance
- ✓ **Modular and versatile:** adjust the length and shape to fit any area
- ✓ **Highly visible and easy to clean:** enhance safety and hygiene in your workplace
- ✓ **Eco-friendly and reusable:** reduce waste and save money

HOW TO IDENTIFY PROBLEM AREAS

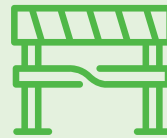
You can't fix what you haven't spotted. The first step to improving warehouse safety and reducing costly damage is identifying the areas most at risk.

Fortunately, there are some simple, practical ways to spot these problems early – before they turn into expensive repairs, downtime, or health and safety incidents.



Watch Your Traffic Flow

Observe how forklifts, pallet jacks, and people move throughout your site. Tight corners, shared zones, and fast-paced intersections are high-risk zones for collisions.



Look for Signs of Wear and Tear

Scuffed walls, dented racking, or damaged door frames are tell-tale signs that impact protection is missing or inadequate in that area.



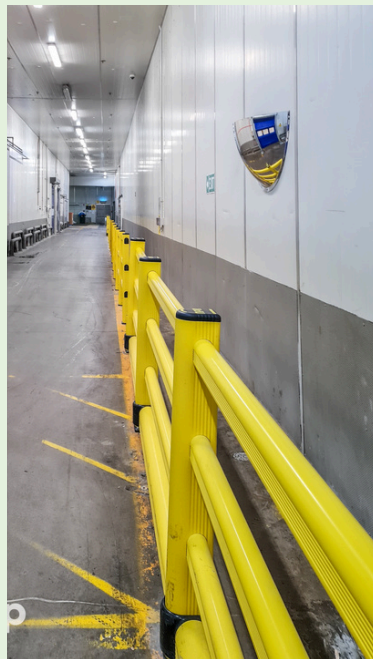
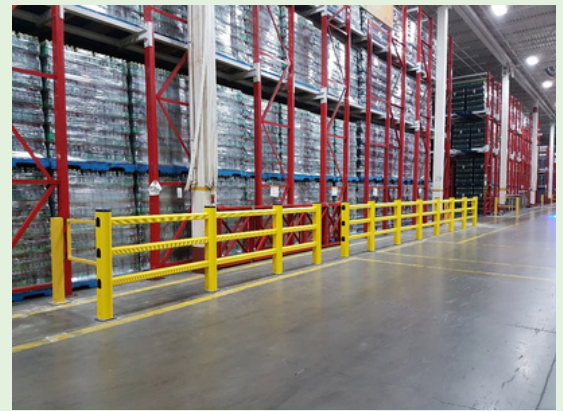
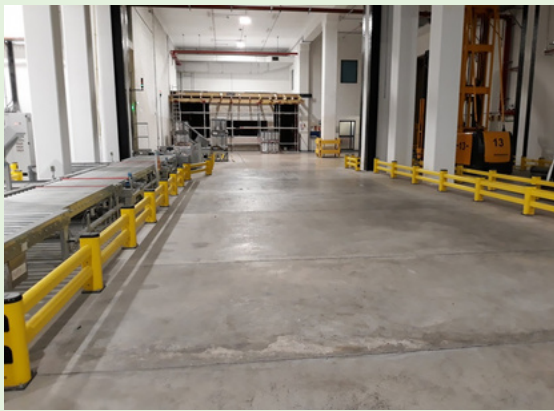
Review Incident and Maintenance Logs

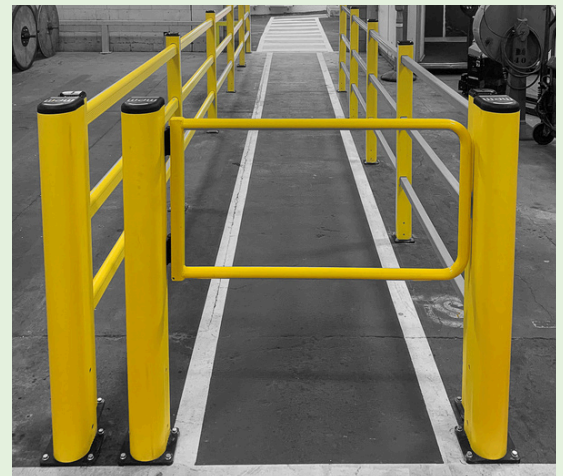
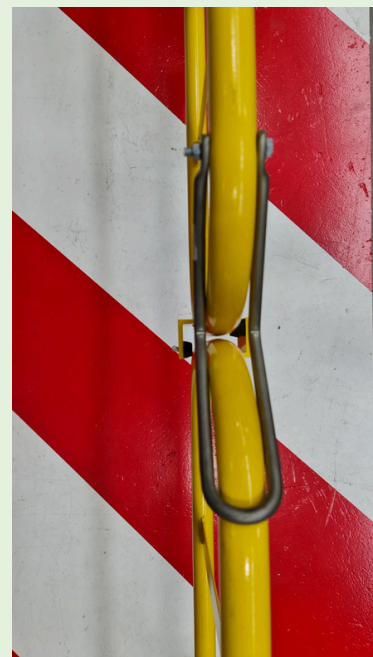
Analyse past near misses, reported incidents, and repeat repair jobs. These patterns often reveal areas where barriers could prevent ongoing issues.



Conduct a Walkthrough with a Safety Expert

Bringing in fresh eyes – especially from a warehouse safety specialist – can help uncover overlooked risks and recommend the right MPM solution for each zone.






PEDESTRIAN 90



PED 90




 Light Load

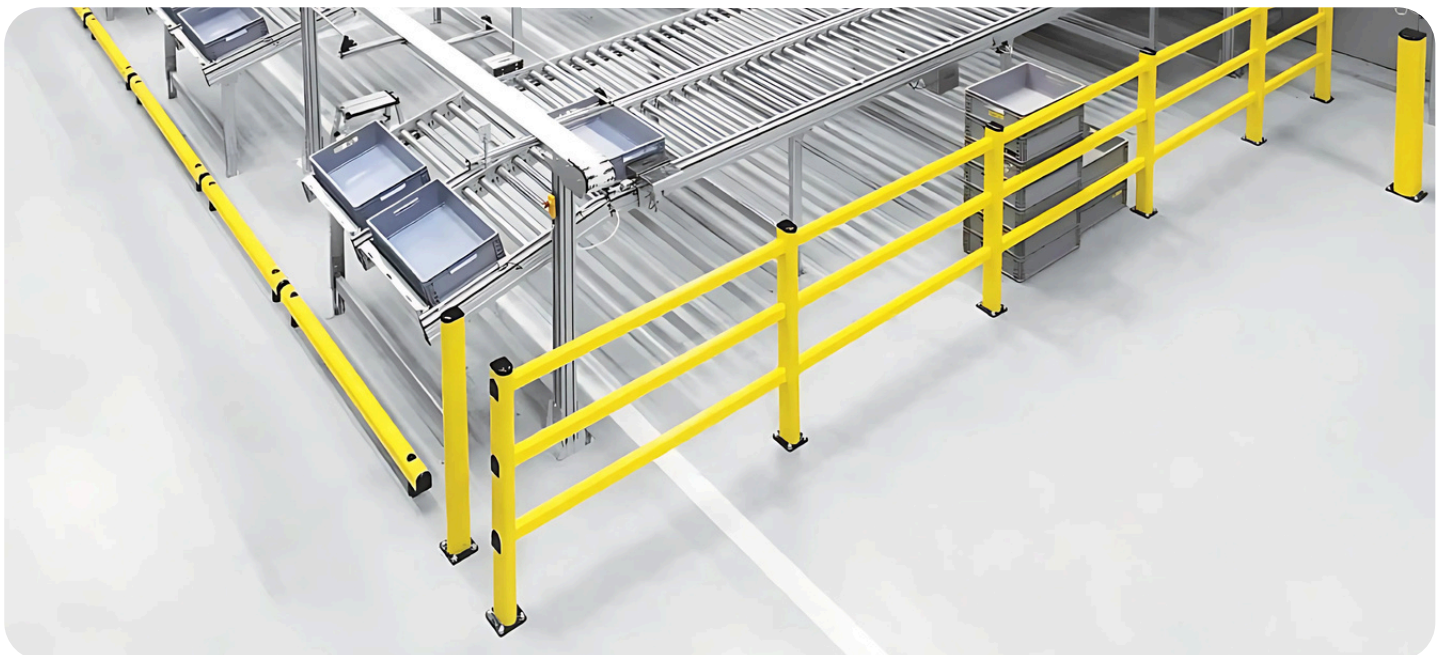
Height **1100 mm**
Standard Module **250 - 1500 mm (250 Increments)**
Corner **Available**
Fixing **Included**
Colour 

PED 90 GL REF



 Heavy Load

Height **1100 mm**
Standard Module **750 - 2000 mm (250 Increments)**
Fixing **Included**
Colour 



PEDESTRIAN 150



PED 150



PED 150 TL



Heavy Load

Height **1100 mm**
Standard Module **250 - 2000 mm (250 Increments)**
Corner **Available**
Fixing **Included**
Colour **●**



Heavy Load

Height **1100 mm**
Standard Module **750 - 2000 mm (250 Increments)**
Corner **Available**
Fixing **Included**
Colour **●**



PEDESTRIAN 150 LINK



PED 150 LINK

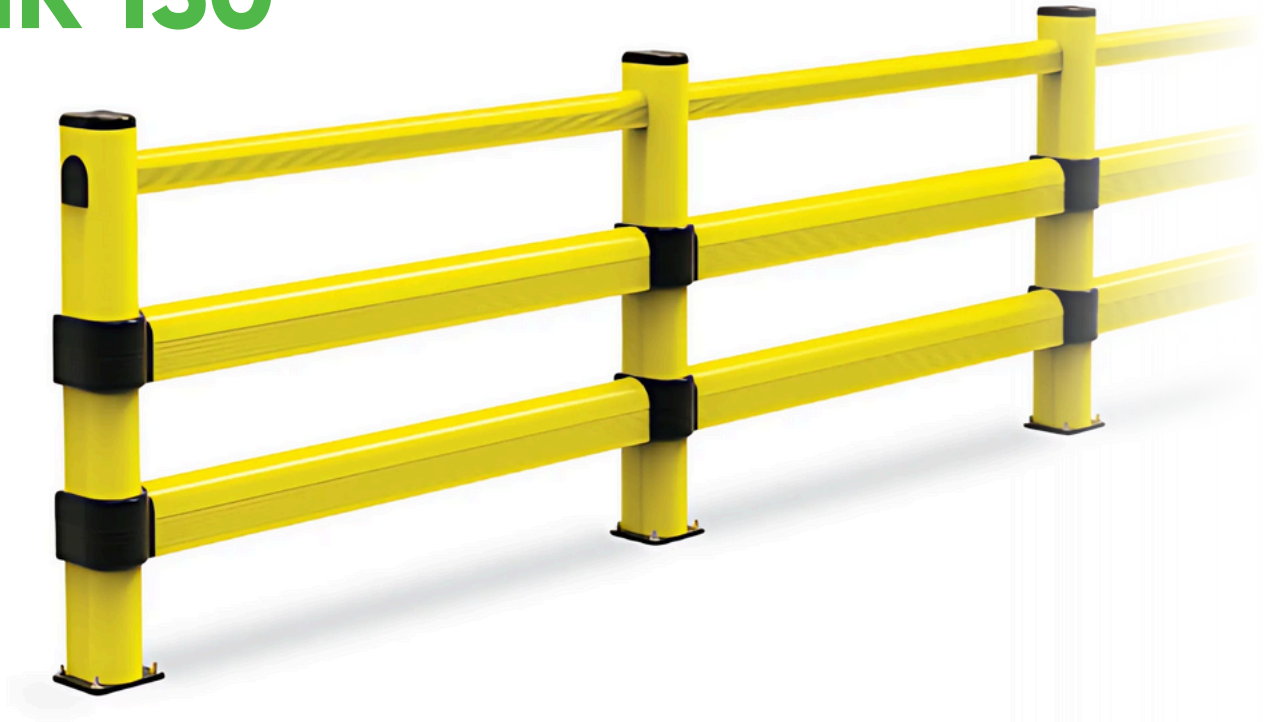


Heavy Load

- Height **1100, 1500, 2000, 2500, 3000 mm**
- Standard Module **500 - 2000 mm**
- Corner **(250 Increments) External Available**
- Fixing **Included**
- Colour **●**



LINK 150



LINK 150/1



LINK 150/2



 Heavy Load

Height **1100 mm**
Standard Module **500 - 2000 mm (250 Increments)**
Corner **External Available**
Fixing **Included**
Colour **●**

 Heavy Load

Height **1100 mm**
Standard Module **500 - 2000 mm (250 Increments)**
Corner **External Available**
Fixing **Included**
Colour **●**





LINK SINGLE RE



Height **500, 800 mm**
Width **400 - 2400 mm**
(50 increments)
Fixing **Included**
Colour

LINK LM RE



Height **500, 800 mm**
Width **400 - 2400 mm**
(50 increments)
Fixing **Included**
Colour



FENCE



FENCE 150



Height **550 mm**
Width **400 - 2400 mm**
(50 increments)
Fixing **Included**
Colour

FENCE LINK



Height **550 mm**
Width **400 - 2400 mm**
(50 increments)
Fixing **Included**
Colour



GRD



GRD 150



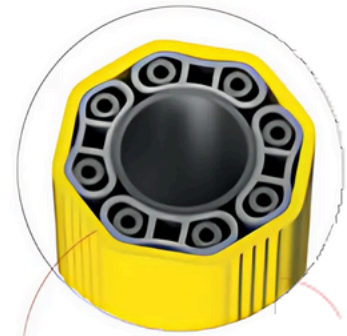
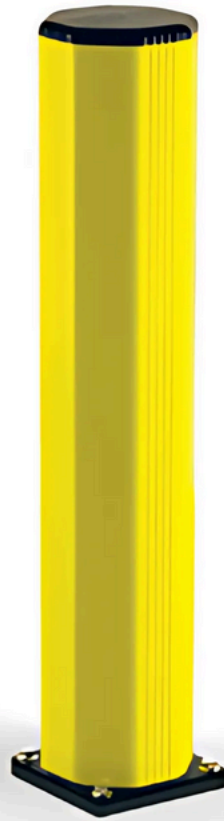
Heavy Load

Height **500, 800, 1150 mm**
Fixing **Included**
Colour **●**



Bollards

GRD



FLEXIBLE

NEW
ANTISHOCK
BUMPER

GRD 200



SHOCK
ABSORBER PAD



INCLUDED



Heavy Load

Height 800, 1200, 2000 mm

Fixing Included

Colour




GRIN



GRIN 150

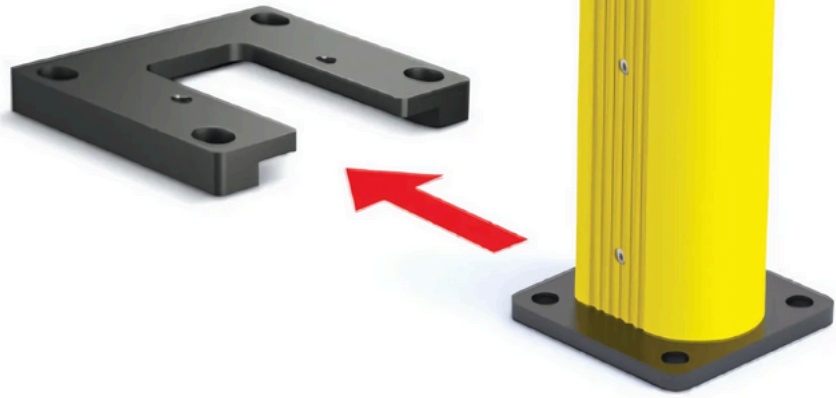


Heavy Load

- Height **200 mm**
- Standard Module **800 - 2000 mm (50 Increments)**
- Fixing **Included**
- Colour 



REMOVABLE PLATE



KIT 90 RE COVER



Height Width **22 mm 182 mm 136 mm**
Depth **SM / FENCE 90 / HR / PED 90 / GRD**
Available For: **90 / LINK 120**

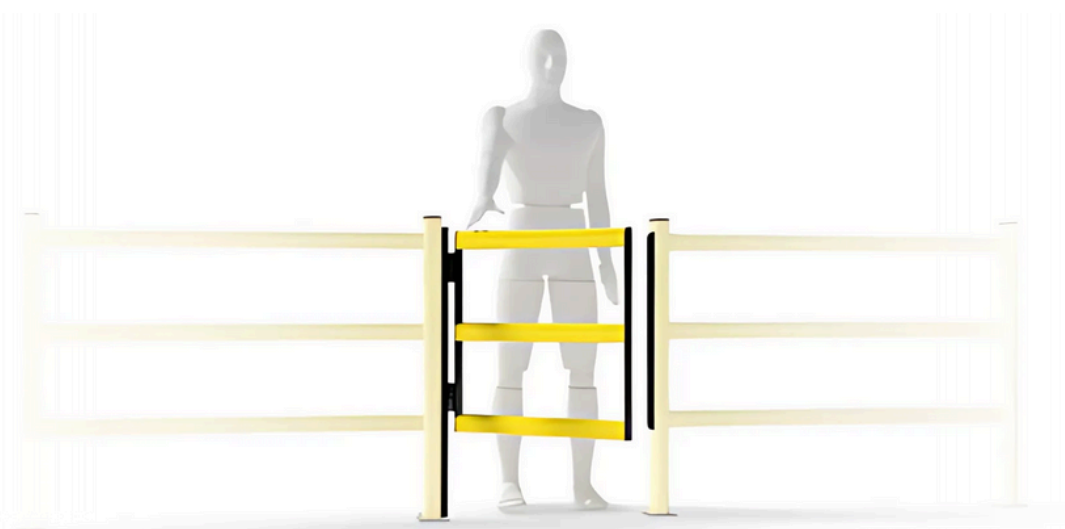
KIT 150 RE COVER



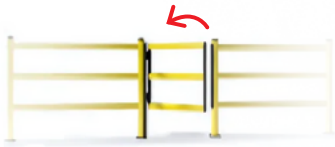
Height Width **24 mm 242 mm**
Depth **176 mm**
Available For: **LM / FENCE 150 / PED 150 / GRD 150 / LINK 150**



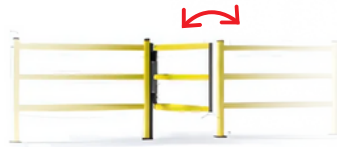
DOOR PEDESTRIAN 90



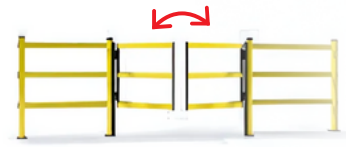
DP 90 ONE WAY



DP 90 SWING



DP 90 SWING DOUBLE



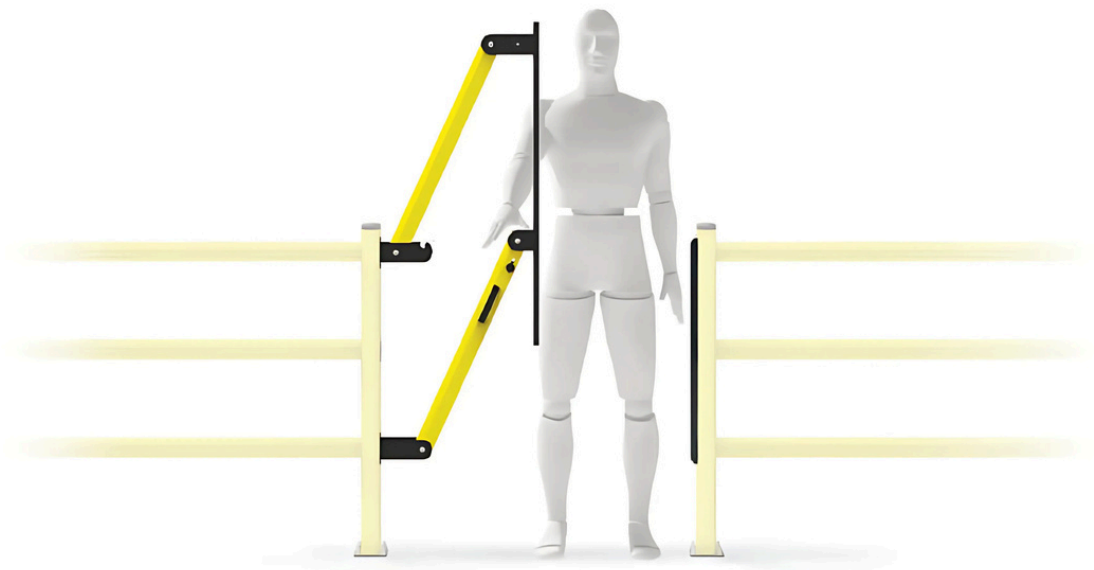
Width **Min 400 mm - Max 1000 mm
(50 increments)**
Fixing **Included**
Colour ●

Width **Min 400 mm - Max 1000 mm
(50 increments)**
Fixing **Included**
Colour ●

Width **Min 800 mm - Max 2000 mm
(50 increments)**
Fixing **Included**
Colour ●



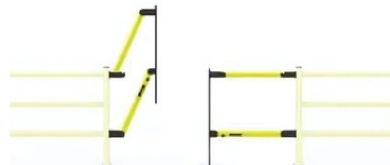
LIFT GATE 90



LIFT GATE 90

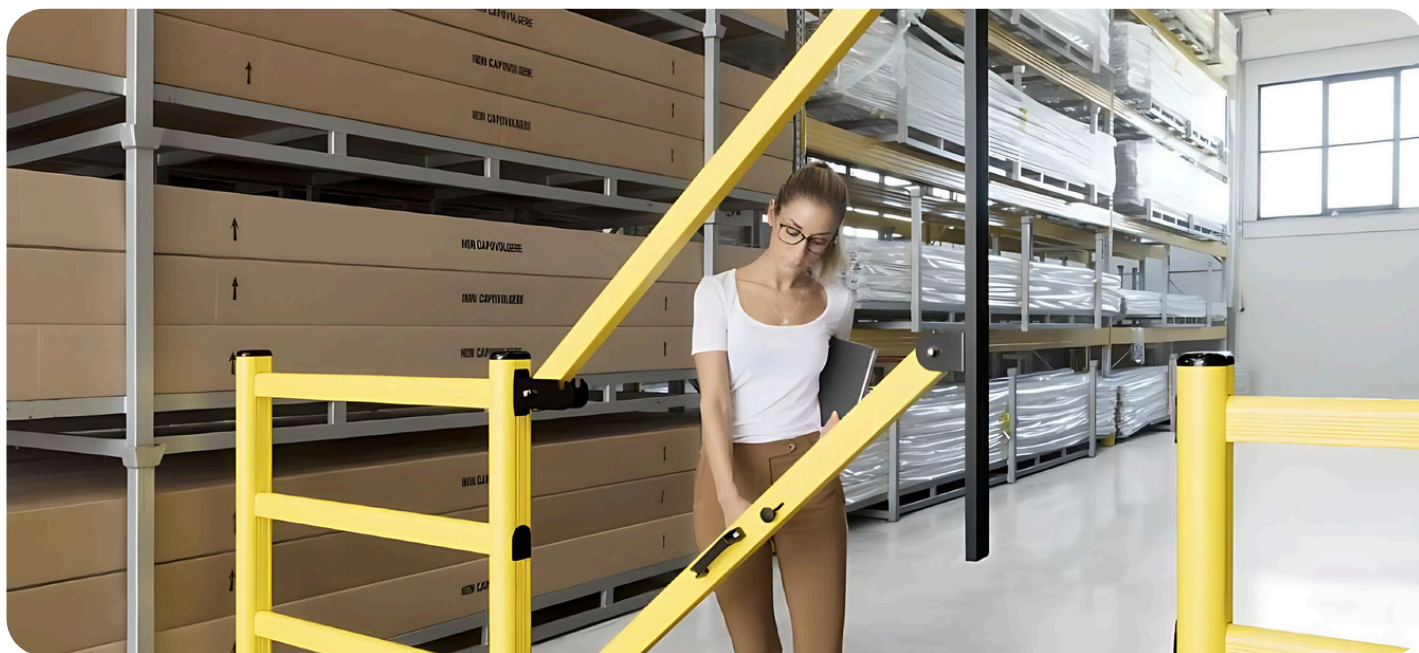


LIFT GATE 90 DOUBLE



Width **Min 1050 mm - Max 1600 mm**
(50 increments)
Fixing **Included**
Colour ●

Width **Min 2100 mm - Max 3200 mm**
(50 increments)
Fixing **Included**
Colour ●





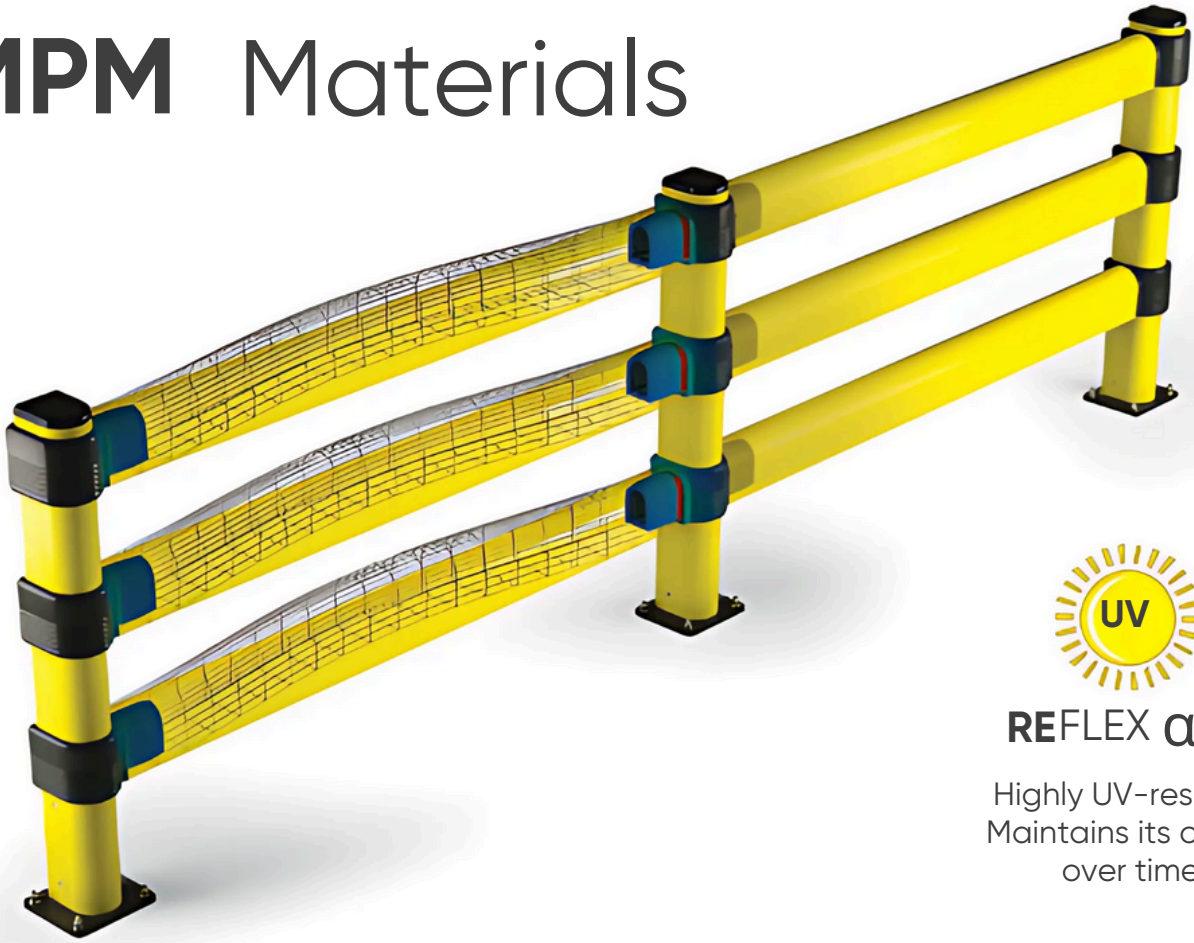
“Having flexible PVC barriers means it’s not just our people on the ground walking around the facility who are kept safe, it’s the drivers of the trucks and forklifts as well as the equipment and machines themselves. If there was an incident, the Ulti impactable barriers flex and give rather than stopping short with a bigger impact. We’ve seen guys thrown out of a forklift on impact with other barriers and it’s not pretty. We’re really impressed with the product and are going to increase the amount of them we have in the facility”

Rene Hajek
Life Health Foods

⚠ WARNING
WATCH FOR
VEHICLES



MPM Materials



REFLEX αLFA

Highly UV-resistant
Maintains its colour
over time



Durability
Through Time



High
Flexibility



Compliance With
EU Directive
2015/863 (ROHS)



100%
Recyclable



Self Extinguishing V0



Anti-scratch
Material



Temperature Range:
-30° + 50° C



High
Flexibility



Compliance With
EU Directive
2015/863 (ROHS)



100%
Recyclable



HB Flammability rating
according to UL 94



Suitable for food
contact



Coloured Material.
No Repainting
Required



Easy To
Clean



Mold Resistant



Coloured Material.
No Repainting
Required



Resistant to
Chemicals



Mold Resistant



Non-toxic



Resistant to
Chemicals



Resistant to Humidity
& Saline Substances



Non-toxic



Resistant to Humidity
& Saline Substances

FIRE CERTIFICATION FOR MPM REFLEX

OUR POLYMER CONFIRMS THE V0
SELF-EXTINGUISHING CLASS

MPM barriers are classified as V0,
according to the international UL94
standard.

Reflex technopolymer Protections:

- Low fire risk
- Self-extinguishing
- Don't spread flames and stop burning within few seconds.

The installation of our barriers lowers fire risk compared to other barriers made of alternative polymers, not V0-Classified.



 **REFLEX**
RESISTANT AND FLEXIBLE

IS FIRE
RESISTANT
CLASS V-0

— What To Expect When You Work With Ulti Group

We take our partnership seriously, so when you work with us, you'll get all the expert support you need to make sure your site operations run smoothly.



World class solution designs



Free expert resources and advice



Rapid response times



Proactive Asset Management

OUR PROCESS

1.



Book A Consultation

Schedule a time to talk to one of our experts and we'll go over your plans and requirements to better understand how we can help.

2.



Receive A Proposal

We'll send you a detailed proposal and designs that meets your budget and requirements.

3.



Solution Sorted, Hassle-Free

Once we've agreed on a solution, we'll handle everything from installation to after-sales service.





Protecting What Matters

We'll help you protect what matters most with smarter, safer, more efficient solutions.



Book a FREE consultation today and get the best warehouse safety solutions for your business.

ulti group

1800 554 869 

0800 807 753 

hello@ultigroup.com

ultigroup.com