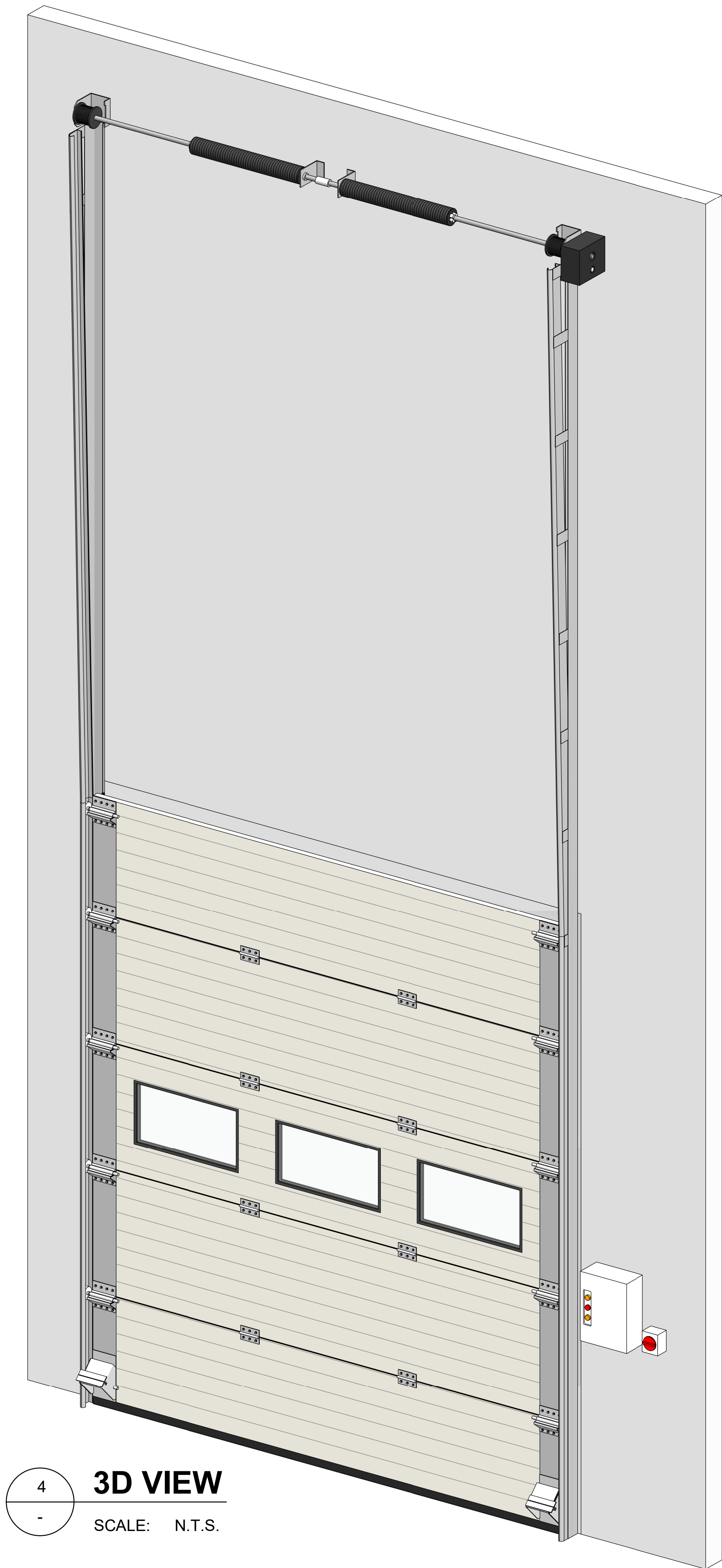
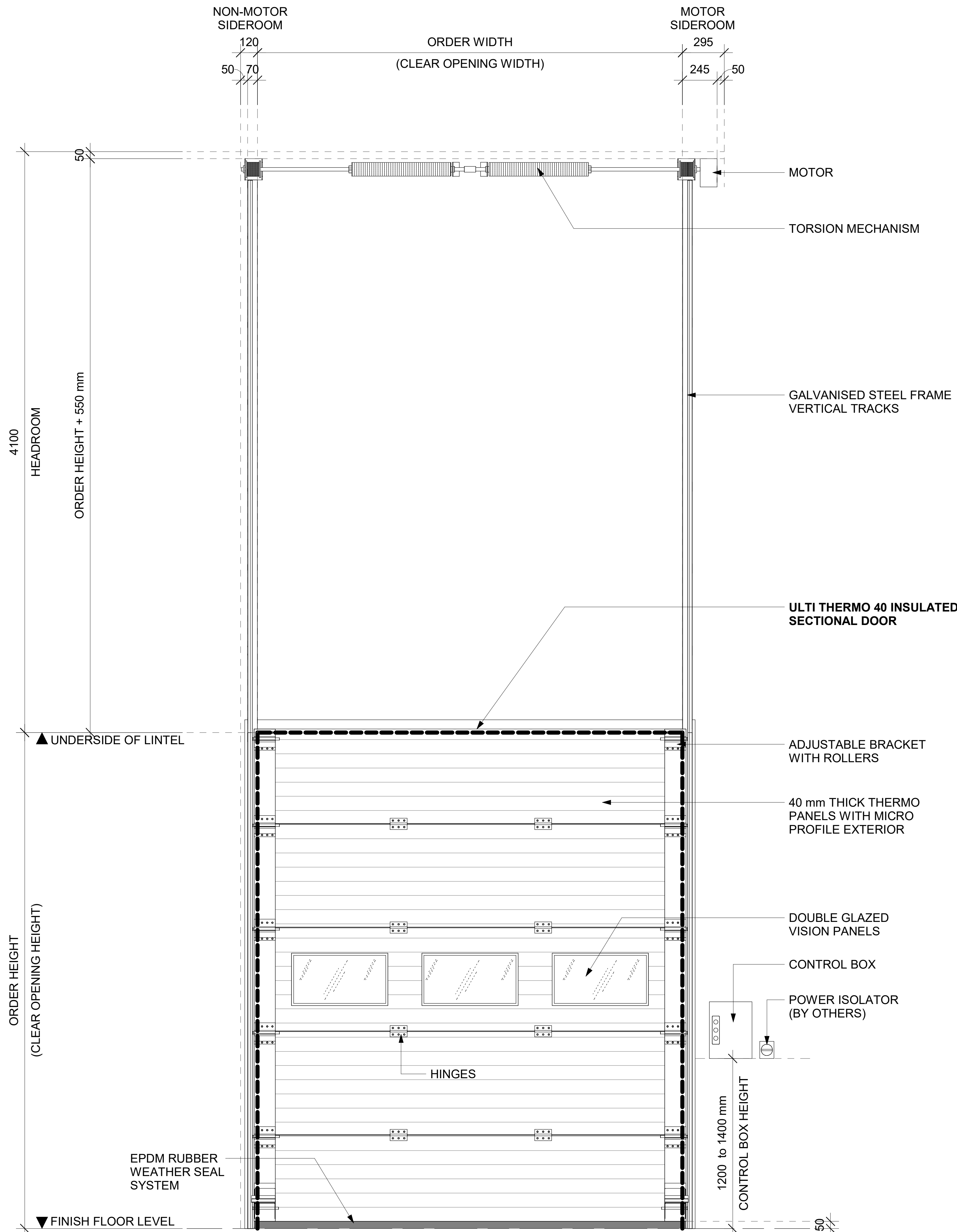
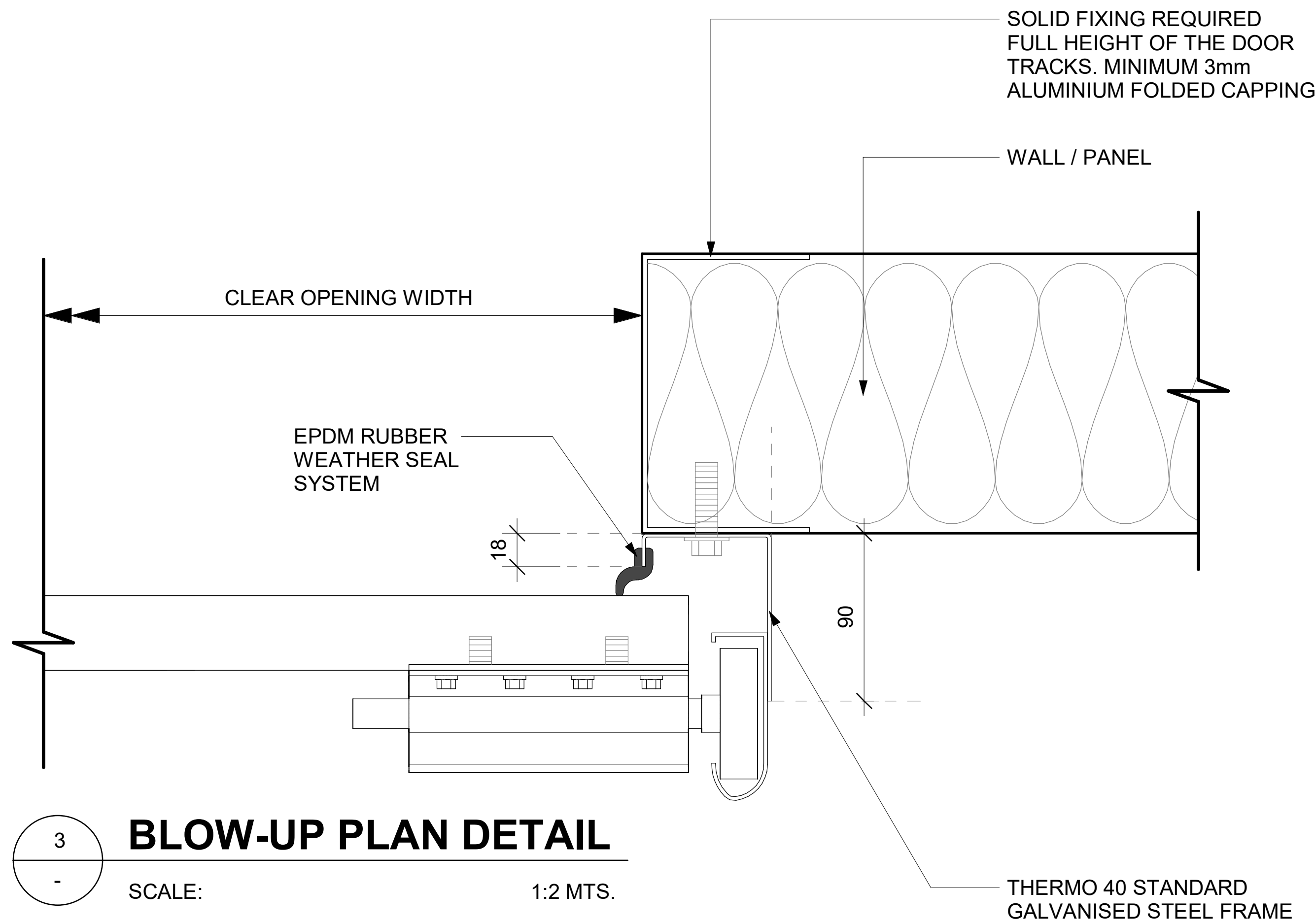
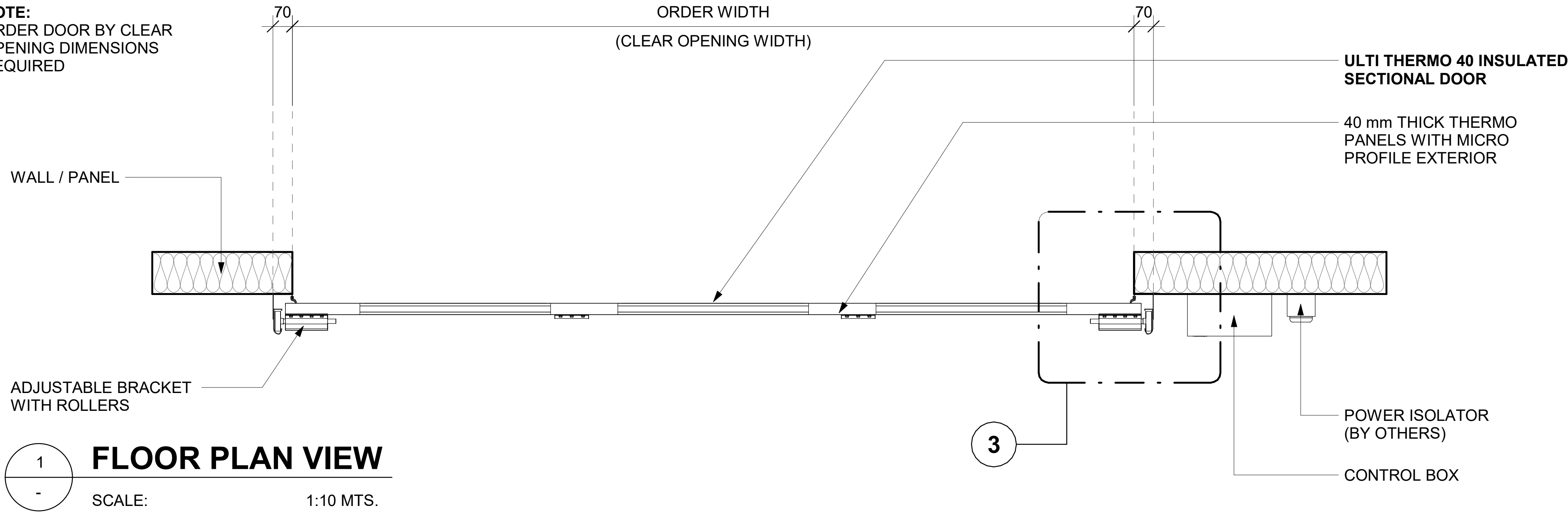


**NOTE:**  
ORDER DOOR BY CLEAR  
OPENING DIMENSIONS  
REQUIRED



**ulti  
group**

© Ulti Group Ltd, 2021

**NOTE:**

CONTACT ULTI GROUP FOR ANY  
CUSTOMISATIONS AND TO DISCUSS  
PROJECT SPECIFIC INFORMATION

www.ultigroup.co.nz  
hello@ultigroup.co.nz  
Phone: 0800 807 753  
105 Glover Road, Hawera, 4610

**SPECIFICATIONS :**

RELEASED VERSION NO. : **VERSION 1**

PRODUCT GROUP : **SECTIONAL DOORS**

PRODUCT ID : **00000**

APPLICATION : **INTERNAL & EXTERNAL**

STANDARD SIZE : **3000 mm WIDE x 3500 mm HIGH**

MINIMUM SIZE : **2000 mm WIDE x 2000 mm HIGH**

MAXIMUM SIZE : **8000 mm WIDE x 6000 mm HIGH**

HEADROOM : **CLEAR OPENING HEIGHT + 550 mm**

SIDE ROOM - MOTOR SIDE : **295 mm**

SIDE ROOM - NON MOTOR SIDE : **120 mm**

STANDARD FRAME  
MATERIAL : **GALVANISED STEEL**

STANDARD FRAME  
COLOUR : **GALVANISED FINISH**

STANDARD PANEL  
MATERIAL : **40 mm THICK THERMO  
PANELS WITH MICRO  
PROFILE EXTERIOR**

PANEL COLOUR  
(INSIDE / OUTSIDE) : **RAL 9002 - STANDARD**

VISION PANELS : **STANDARD RECTANGULAR  
DOUBLE GLAZED VISION  
PANEL (680 mm x 370 mm)**

POWER SUPPLY : **3 PHASE, 400V + NEUTRAL  
+ EARTH 16 Amp 50 Hz**

**TITLE:**

**ULTI THERMO 40  
INSULATED SECTIONAL  
DOOR - VERTICAL LIFT**

**SHEET NO. :**

**1 OF 1**

**DATE :**

**NOV. 15, 2021**

**DRAWING NUMBER :**

**THERMO40-SECT-VERT-001**

**APPROVED BY :** J.PRESTIDGE

**DRAWN BY :** J.ENRIQUEZ

**SCALE :** As indicated **SHT. SIZE :** A0

\*All dimensions are in millimeters unless otherwise specified