

FRONT ELEVATION VIEW

SCALE: 1:12 MTS.

NOTE:
ORDER DOORS BY CLEAR
OPENING DIMENSIONS
REQUIRED

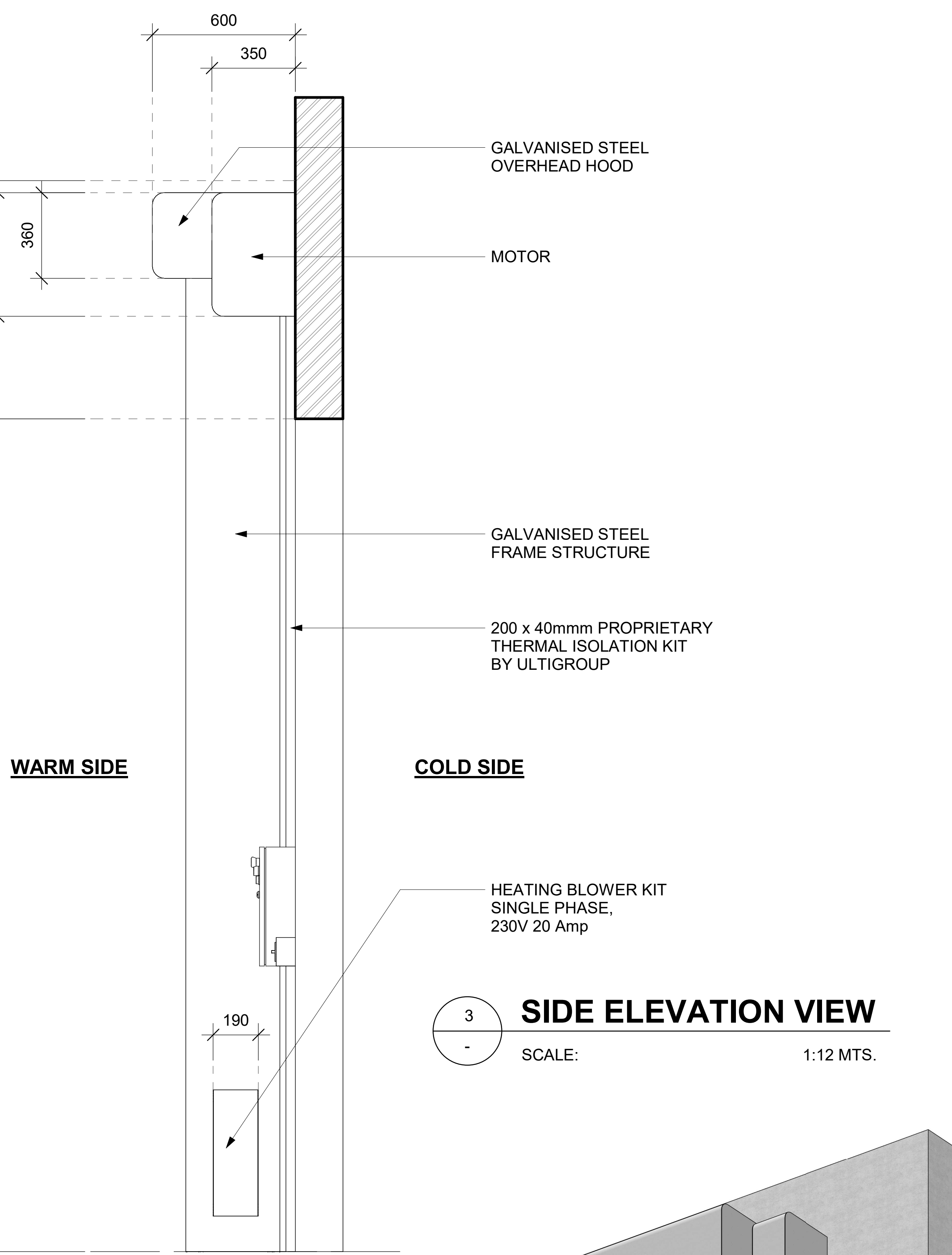
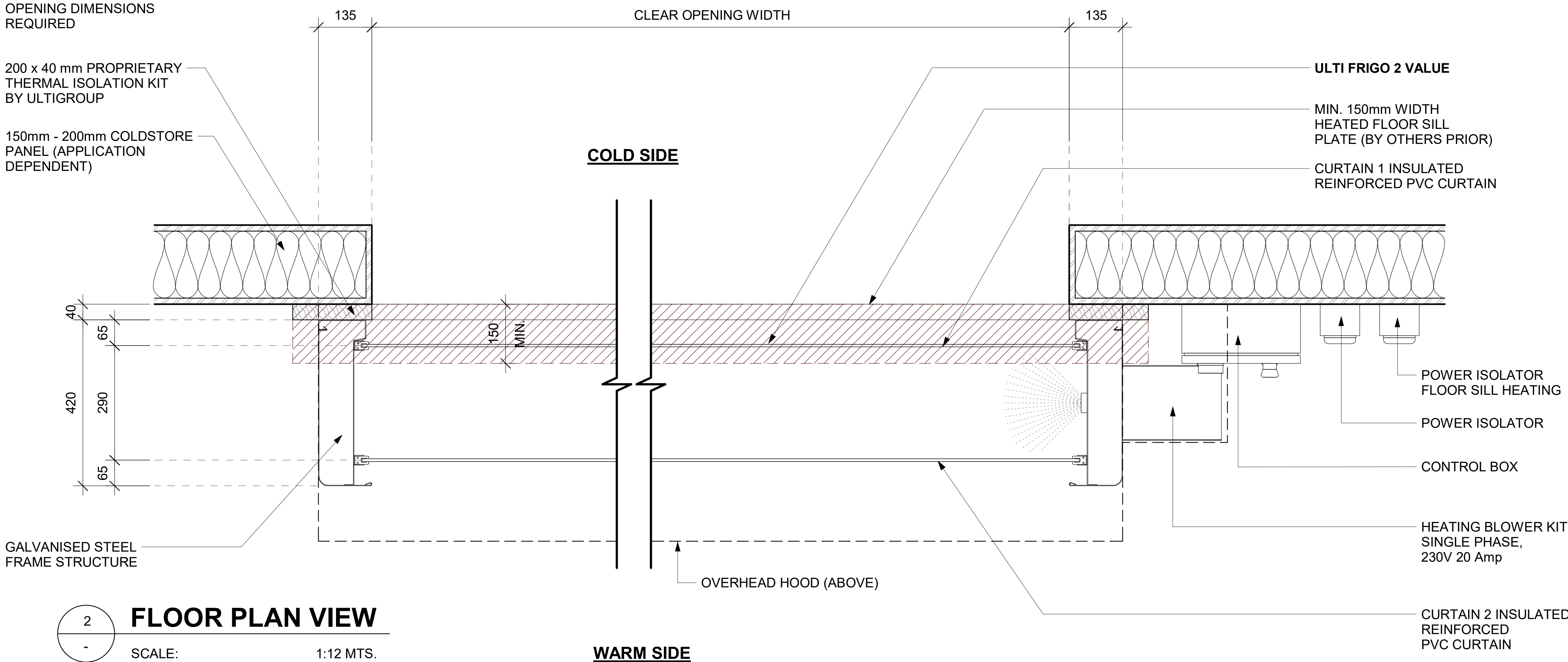
200 x 40 mm PROPRIETARY
THERMAL ISOLATION KIT
BY ULTIGROUP

150mm - 200mm COLDSTORE
PANEL (APPLICATION
DEPENDENT)

GALVANISED STEEL
FRAME STRUCTURE

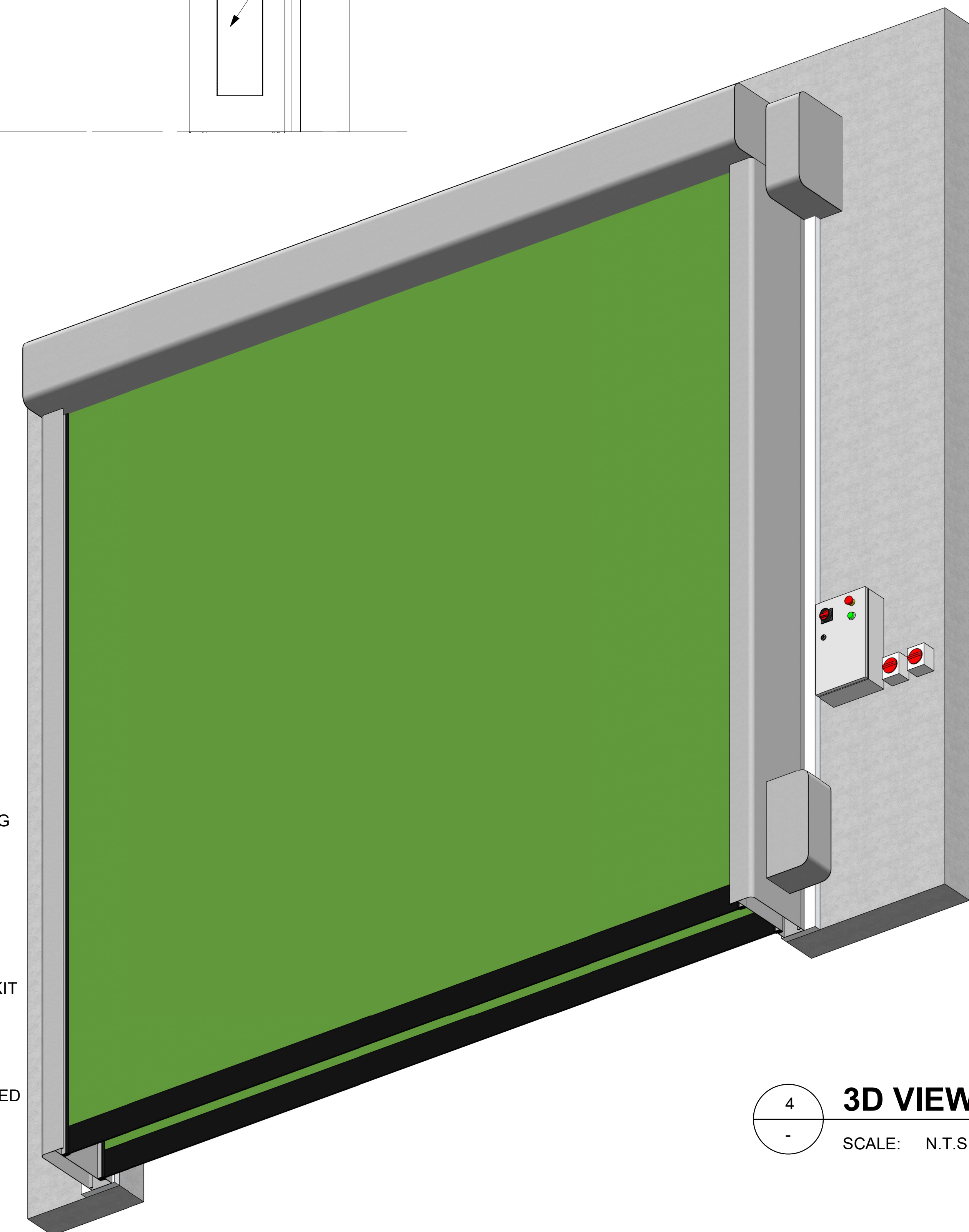
FLOOR PLAN VIEW

SCALE: 1:12 MTS.



SIDE ELEVATION VIEW

SCALE: 1:12 MTS.



3D VIEW

SCALE: N.T.S.

ulti group

© Ulti Group Ltd, 2020

NOTE:

CONTACT ULTI GROUP FOR ANY
CUSTOMISATIONS AND TO DISCUSS
PROJECT SPECIFIC INFORMATION

www.ultigroup.co.nz
hello@ultigroup.co.nz
Phone: 0800 807 753
105 Glover Road, Hawera, 4610

SPECIFICATIONS :

RELEASED VERSION NO. : **VERSION 1**

PRODUCT GROUP : **HIGH SPEED DOORS**

PRODUCT ID : **00000**

APPLICATION : **INTERNAL & EXTERNAL**

STANDARD SIZE : **4000 mm WIDE x 3500 mm HIGH**

MINIMUM SIZE : **2000 mm WIDE x 2000 mm HIGH**

MAXIMUM SIZE : **6000 mm WIDE x 7000 mm HIGH**

HEADROOM : **1000 mm**

SIDE ROOM - MOTOR SIDE : **385 mm**

SIDE ROOM - NON MOTOR SIDE : **185 mm**

STANDARD FRAME
MATERIAL : **GALVANISED STEEL**

STANDARD FRAME
COLOUR : **GALVANISED FINISH**

STANDARD CURTAIN
MATERIAL : **900 gr / m² REINFORCED
PVC FABRIC CURTAIN**

CURTAIN COLOUR
(INSIDE / OUTSIDE) : **RAL 6018 - STANDARD**

VISION PANELS : **NONE**

POWER SUPPLY : **SINGLE PHASE,
230V 20 Amp**

WORKING
TEMPERATURE : **ALL POSITIVE
TEMPERATURES FROM
0°C UP TO +50°C. CAN ALSO
BE APPLIED TO NEGATIVE
TEMPERATURE APPLICATION
0°C DOWN TO -25°C WITH
UPGRADE TO THERMAL
ISOLATION KIT**

TITLE:

ULTI FRIGO 2 VALUE HIGH SPEED DOOR

SHEET NO. :

1 OF 1

DATE :

SEPT. 11, 2020

DRAWING NUMBER :

FRIGO2-VALUE-001

APPROVED BY :

J.PRESTIDGE

DRAWN BY :

J.ENRIQUEZ

SCALE :

As indicated

SHT. SIZE :

A0

*All dimensions are in millimeters unless otherwise specified

* EVAPORATIVE COOLING
HUMIDITY CONTROL REQUIRED
TO 'WARM SIDE' ROOM