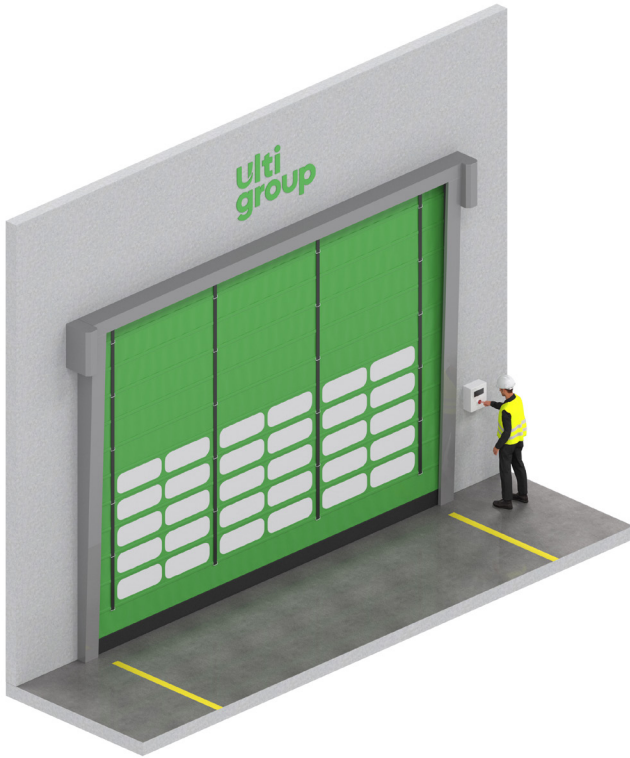


Ulti Fold Value

HIGH STRENGTH DOOR SYSTEM FOR LARGE OPENINGS



The Ulti Fold door is ideal for situations where both reasonable speed and high wind strength are required for frequent access. Providing a simple, safe, reliable solution to control environments for larger openings traditionally left without doors or using inefficient slow doors.

Large Span

Turn your large openings into responsive openings with the Ulti Fold Value, spanning up to 10m wide and 15m high openings. Allows control of dust, birds and/or personnel in areas requiring access for large vehicles or similar e.g. truck loading canopies.

Strength Where It Matters

Exterior building doors need to be immensely strong to endure NZ's high winds, harsh storms or other severe environmental conditions, and the NZ-made Ulti Fold Value has been designed to withstand them all, with a wind speed rating of up to 160km/h.

Ideal for use in

- Warehouses
- Distribution Centres
- Manufacturing Facilities
- Printing Companies
- Logistics
- Dust Control
- 'Big-box' Retail
- Fertiliser storage and handling
- Washdown areas
- External applications
- Mining and Quarries

Safety Where It Matters

Adjustable photocells with a 20m range detect traffic and reverse closing door, and vision panels can be added to enhance visibility when closed or opening, maximising safety to prevent personnel harm and vehicle damage.

Speed Where It Matters

Reduced waiting times for doors to open and close increases productivity and efficiency in your facility with the Ulti Fold Value. Prompt closing of openings after use ensures maximum environmental control benefit.

Robust Versatility

The Ulti Fold Value can be widely applied, and offers enhancements to ensure it continues to perform reliably even in harsh environments such as fertiliser storage or areas exposed to salt laden air. The industry work horse continues to deliver value in tough conditions.



STANDARD COMPLIANCE

Water Permeability	Class 1	Wind Permeability	Not Tested
Wind Loading	Class 3 up to 35m ²	Safe Openings	Yes
Thermal Transmittance	6.02 W/m ² k	Pressure Differential	Up to 60Pa

TECHNICAL SPECIFICATIONS

Application	Internal/External
Standard Size	5000mm H x 5000mm W
Minimum Size	3000mm H x 3000mm W
Maximum Size	15000mm H x to 10500mm W
Opening Speed	up to 1.0m/sec
Closing Speed	up to 1.0m/sec
Operating Temperature	-20°C to +50°C (<0°C requires heated frame, motor + control box)

FRAME

Material	Galvanised steel head frame structure
Colour	Galvanised

SPACE REQUIREMENTS minimum clearances

Headroom	1050-1550mm (size dependant)
Side Room	200mm (non-motor side), 400mm (motor side)

CURTAIN

Material	Reinforced PVC curtain
Colours	RAL6018 (standard), RAL1003, RAL1015, RAL2004, RAL3002, RAL5002, RAL5010, RAL5012, RAL6026, RAL7035, RAL7037, RAL7042, RAL8014, RAL8017, RAL9005, RAL9006, RAL9010
Support	Galvanised steel wind strengthening bars within curtain
Vision Panels	1 row of clear-vision panels

SAFETY

Standard Inclusions	2 Sets of Infrared Photocell Safety beams IP65 LED Countdown Timer in Control box
Emergency Egress	Manual hand crank

DIMENSIONS

MOTORISATION

Motor	IP54 rated 1.5kW Heavy Duty 3phase Motor Drive and electromagnetic brake – RH mounted
Motor Position	Single RH Side < 30m ² , Dual Side > 30m ²
Control Panel	IP54 rated Metal Control box – RH mounted
Power Supply	400V; 3phase+N+E; 15Amp Rated adjacent to control box installed to right hand side

ACTIVATIONS

Manual	Push button fitted to control box
--------	-----------------------------------

WARRANTY

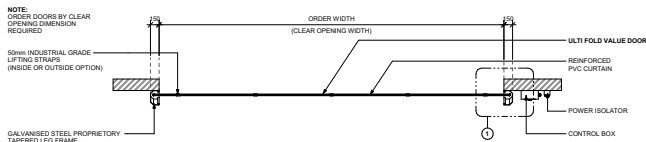
12 Months or 100,000 cycles

STANDARD INCLUSIONS

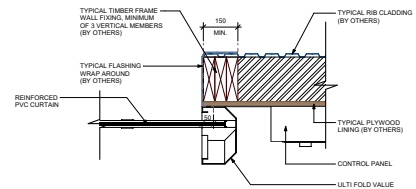
Tapered Leg frame and motor cover in galvanised finish Encoder control Performance rated to 500,000 cycles to EN12604

OPTIONAL FEATURES

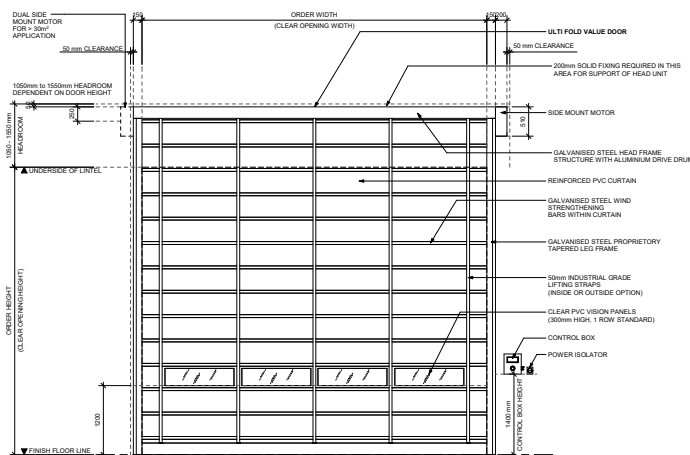
Activations	All Ulti activation options
Motorisation	IP65 Rated 1.5kw Motor with Stainless Brake (for corrosive applications)
Control Panel	IP54 Corrosion Resistant AISI:304 Stainless Steel
Mounting Options	LH Power Supply, Custom Control Box Position, LH Control Box, LH Motor, Front Mount Motor, Dual Side, Dual Front Motor
Frame Material	Corrosion Resistant AISI:316 Stainless Steel
Frame Colours	RAL7037, RAL9005, RAL9010, RAL3000, RAL5002
Curtain Design	High-gloss embossed, flame retardant Translucent Reinforced PVC Curtain according to DIN 75 2000 – 900gr/m ² ; light transmission: 35%; cold resistance: -30°C; heat resistance +70°C
Vision Panels	2 or 3 rows, custom rows available
Ventilated Panel	1,2, or 3 rows, custom rows available
Safety	Virtual Vision Extended LED Countdown Timer 2000mm Tower Beam Safety Sensors IP67
Emergency Egress	Manual Hand Chain, Counter Balance Manual Release
Other Features	Increased Wind Loading – up to Class 4



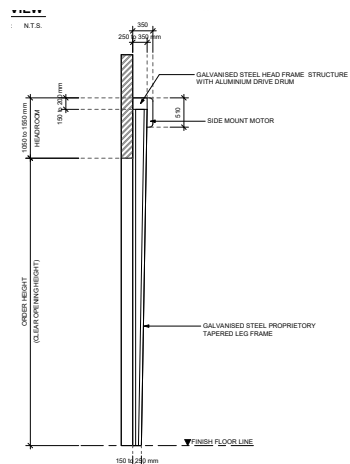
FLOOR PLAN VIEW



TYPICAL WALL FIXING DETAIL



FRONT ELEVATION VIEW



SIDE ELEVATION VIEW