

# Ulti Fold Plus

## HIGH PERFORMANCE DOOR SYSTEM FOR LARGE OPENINGS



The Ulti Fold door is ideal for situations where both enhanced speed and high wind strength are required for frequent access. Providing a simple, safe, smart solution to control environments for larger openings traditionally left without doors or using inefficient slow doors.

### Large Span

Turn your large openings into responsive openings with the Ulti Fold Plus, spanning up to 10.5m wide and 8m high openings. Allows control of dust, birds and/or personnel in areas requiring access for large vehicles or similar e.g. truck loading canopies.

### Strength Where It Matters

Exterior building doors need to be immensely strong to endure NZ's high winds, harsh storms or other severe environmental conditions, and the NZ-made Ulti Fold Plus has been designed to withstand them all, with a wind speed rating of up to 160km/h.

### Ideal for use in

- Warehouses
- Distribution Centres
- Manufacturing Facilities
- Printing Companies
- Logistics
- Dust Control
- 'Big-box' Retail
- Aviation/Airport
- Waste Treatment Facilities
- Ship-Yard/Ports
- Agriculture
- Heavy Industry

### Safety Where It Matters

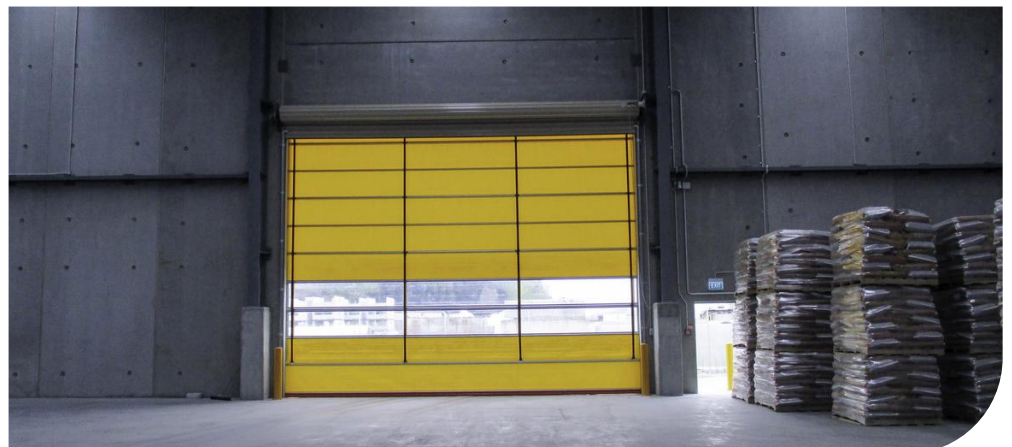
Adjustable photocells with a 20m range detect traffic and reverse closing door, and vision panels can be added to enhance visibility when closed or opening, maximising safety to prevent personnel harm and vehicle damage.

### Speed Where It Matters

Reduced waiting times for doors to open and close increases productivity and efficiency in your facility with the Ulti Fold Plus. Prompt closing of openings after use ensures maximum environmental control benefit.

### Robust Versatility

The Ulti Fold Plus can be widely applied and offers enhancements to ensure it continues to perform reliably even in harsh environments such as fertiliser storage or areas exposed to salt-laden air. The industry workhorse continues to outperform its traditional alternatives.



## STANDARD COMPLIANCE

|                    |                         |                   |         |
|--------------------|-------------------------|-------------------|---------|
| Water Permeability | Class 1                 | Wind Permeability | Class 0 |
| Wind Loading       | Class 3 width dependent | Safe Openings     | Yes     |
| Thermal Resistance | 6.02 W/m²k              |                   |         |

## TECHNICAL SPECIFICATIONS

|                       |   |
|-----------------------|---|
| Application           | Internal/External   |
| Minimum Size          | 3000mm H x 3000mm W   |
| Maximum Size          | 8000mm H x 10500mm W (maximum 50m²)                                 |
| Opening Speed         | up to 1.5m/sec  |
| Closing Speed         | 0.5m/sec  |
| Operating Temperature | -20°C to +50°C<br>(<0°C requires heated frame, motor + control box) |

## FRAME

|          |  |
|----------|--|
| Material | Galvanised steel, self-supporting head frame structure with aluminium drive drum<br>Proprietary leg frame and motor cover in galvanised finish |
| Colour   | Galvanised   |

## SPACE REQUIREMENTS minimum clearances

|           |                                       |
|-----------|---------------------------------------|
| Headroom  | 1200-1300mm (size dependant)          |
| Side Room | 200mm (non-motor side and motor side) |

## CURTAIN

|               |   |
|---------------|---|
| Material      | Reinforced PVC curtain                                  |
| Colours       | RAL6018 (standard), RAL1003, RAL5002, RAL7042, RAL9010, |
| Support       | Galvanised steel wind strengthening bars within curtain |
| Vision Panels | 2 rows of clear-vision panels                           |

## DIMENSIONS

## MOTORISATION

|                |   |
|----------------|---|
| Motor          | IP54 rated 2.2kW Heavy Duty 3phase Motor Drive and electromagnetic brake – RH mounted |
| Motor Position | RH Front  |
| Control Unit   | IP65 rated ABS Control Box with inverter frequency controller – RH mounted            |
| Power Supply   | 400V; 3phase+N+E; 15Amp Rated adjacent to control box installed to right hand side    |

## ACTIVATIONS

|        |   |
|--------|---|
| Manual | Large Heavy-duty Mushroom Head push button<br>Push button and Emergency stop button fitted to control box<br>Touchscreen user interface |
|--------|---|

## SAFETY

|                     |   |
|---------------------|---|
| Standard Inclusions | 1 set of infrared photocell safety beams IP65<br>2000mm high Tower Beam Safety Sensors IP67 |
|---------------------|---|

## WARRANTY

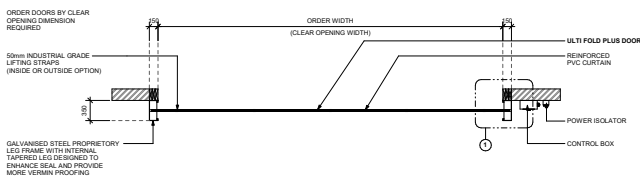
|                             |
|-----------------------------|
| 24 Months or 100,000 Cycles |
|-----------------------------|

## STANDARD INCLUSIONS

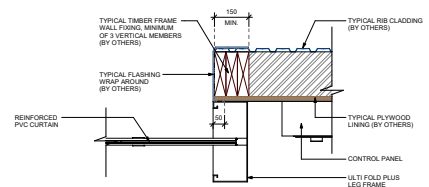
|   |
|---|
| Internal Tapered Leg designed to enhance seal, and provide more vermin proofing |
|---|

## OPTIONAL FEATURES

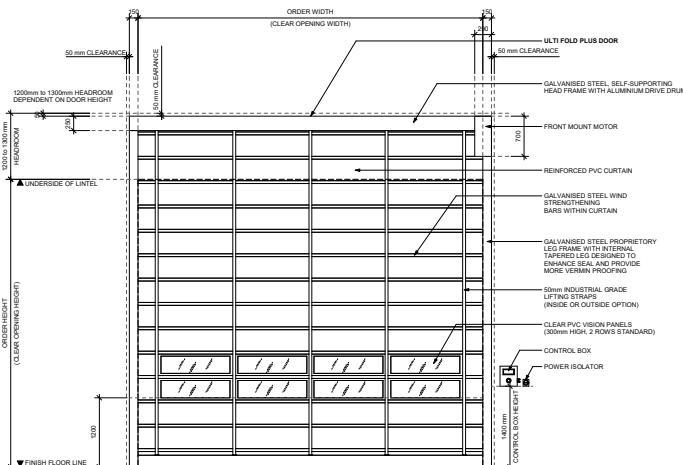
|                  |   |
|------------------|---|
| Activations      | All Ulti activation options can be applied  |
| Mounting Options | LH power supply, LH motor, LH control box<br>Custom control box position  |
| Frame Material   | Corrosion Resistant AISI:316 Stainless Steel  |
| Frame Colours    | RAL3000, RAL5002, RAL6018, RAL7042, RAL9003, RAL9005<br>RAL colour of your choice   |
| Curtain Colours  | RAL2008, RAL3000, RAL3004, RAL3020, RAL5005, RAL5011,<br>RAL5013, RAL5015, RAL5021, RAL6005, RAL7038, RAL8017,<br>RAL9005 |
| Vision Panels    | 1 or 3 rows, custom rows available  |
| Ventilated Panel | 1 or 3 rows, custom rows available  |
| Safety           | Virtual Vision  |



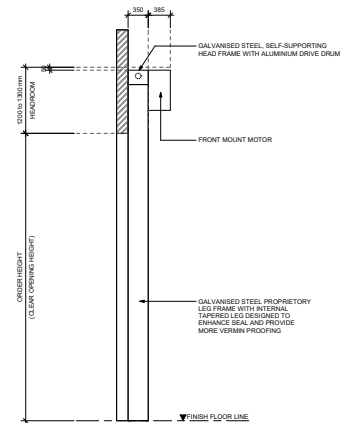
FLOOR PLAN VIEW



TYPICAL WALL FIXING DETAIL



FRONT ELEVATION VIEW



SIDE ELEVATION VIEW