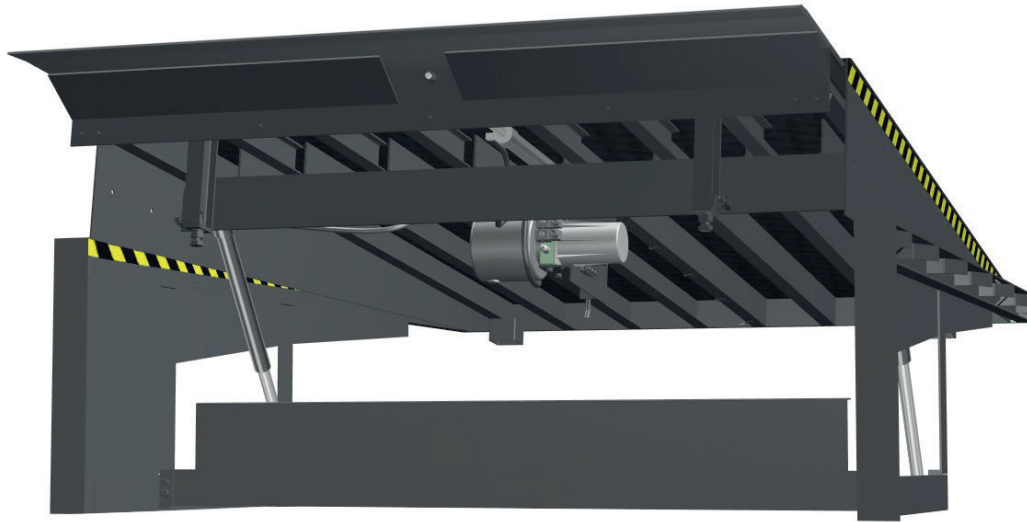


G9000 Hydraulic Telescopic Lip Dock Leveller

Robust, reliable and easy to operate. The G9000 Dock Leveller is designed to make loading and unloading safe and efficient.

Rite-Hite Hydraulic Telescopic Lip Dock Levellers are designed and built to last, even in the roughest applications and environments. They convince through their sturdy platform construction with hot-rolled heavy-weight steel profiles for extra stability and safety.



To implement a pedestrian safety zone of 500 mm between the trailer and the loading dock, the leveller can be ordered with a telescopic lip that extends up to 1000 mm.

Versatile interlock capability

- » Easy to combine with our broad range of doors, vehicle restraints, safety barriers and other safety products to ensure a reliable full-time protection for your employees at the loading dock.



Rite-Hite Global Wheel-Lok vehicle restraint



Rite-Hite Dok-Guardian safety barrier

High hydraulic reliability

- » Two hydraulic cylinders for the positioning of the platform and one for the positioning of the lip ensure high reliability and low maintenance.

Customizable controls

- » Modules can be customized to meet your individual operating requirements, for example to integrate doors and vehicle restraint systems into your control processes.

Sturdy platform construction

- » Structural design incorporates no more than 250 mm of beam spacing under the deck to accommodate 3-wheel and 4-wheel forklift traffic.

Various frame options

- » Including curb angle frames for precasted pit frames and flat steel frames for replacement levellers. Also available as dock box model.

Telescopic lip guidance

- » Four roller bushings reduce friction and ensure a smooth operation.

Exclusive safety features

- » Integral maintenance bolts supports the platform and lip for easy service access and protects personnel during clean out and inspection.
- » Available 150 mm Safe-T-Lip® barrier helps prevent open dock drop-off accidents.

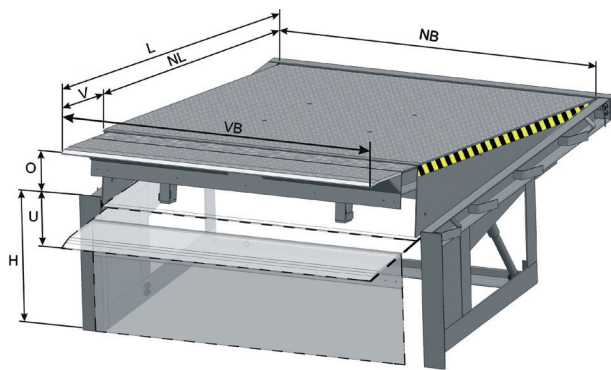
Automatic safety protection

- » Built-in velocity fuse prevents platform from free-falling in case of a hydraulic pressure loss.

Specifications

Operation

To raise the platform, push and hold the raise button on the control box. The other push buttons are not active while the platform is raising. To extend the lip, push and hold the extend button. The minimum lip extension before the dock leveller platform and lip can be lowered to the trailer bed is approx 100 mm.



After completion of the loading operation, the dock leveller can be returned to the stored position by giving the automatic return button a pulse signal. The platform is designed to compensate for canted truck beds up to 100 mm and remains flush with the rear of the pit to eliminate pinch points.

Reliable and safe hydraulic system

The platform is raised by two hydraulic cylinders powered by a 0,75 kW motor rated at 3~400 V, 50 Hz / N / PE (60 Hz on request). The system has a built-in velocity fuse (free-fall protection). The lip is extended by a hydraulic cylinder. The hydraulic pump, manifold and oil reservoir are contained in an integral assembly, which is fitted to the front of the platform for easy maintenance.

Electrical system

The electrical system consists of a IP 65 enclosure with four push-buttons (Raise, Extend lip, Retract lip, Automatic return) and a rotary lockable main power switch. The microprocessor controls allow for easy adjustments.

Standard features

- » CE approved / Design according to DIN EN 1398
- » Capacity 60 kN
- » Anti-slip tread plate
- » Frame type U-profile
- » Telescopic lip guided by 4 roller bushings
- » Telescopic lip: bowed 5°
- » Hydraulic emergency stop
- » Automatic floating position
- » Automatic stop after power failure/emergency stop
- » Steel construction painted RAL 7016
- » Yellow/black warning stripes
- » Door interlock terminal included
- » Front curtain made of black PVC
- » Automatic return function

Options

- » Curb angle frame for a pre-casted pit frame
- » Flat steel frame for replacement leveller
- » Framing without front brackets
- » Dock box for concrete works
- » RAL-colour of choice (visible parts)
- » Zinc-plated finish
- » Weather seal
- » Foam insulation (styrodur plates 40 mm, platform only)
- » IGLU-version
- » Abrasive platform surface
- » Dock bumpers in different variants
- » Stepped design (\geq NL 2,5 m):
 - Length 1250 mm / Height = 300 mm (standard dimensions)
 - Capacity dock leveller: Standard 60 kN (optional 80 kN)

» Other options are available on request

Ask your Rite-Hite Representative for more details on a Planned Maintenance Program.

Nominal dimensions

NL Nominal Length (mm)	V Telescopic Lip extended (mm)	L Total Length (mm)	O Service range up (mm)	U Service range down (mm)	H Closed Height (mm)	H-Iglu ^a Closed Height (mm)	H-Stepped Closed Height (mm)	NB Nominal Width (mm)	VB Tapered Lip Width (mm)	Tapered Lip (Width / Depth) (mm)
2000	500/900 ^e	2500/2900	350	350	620	720	----	1500 ^b	1500 ^b	on request
2500	500/1000 ^e	3000/3500	350	350	620	720	850	1750 ^c	1750 ^c	on request
3000	500/1000 ^e	3500/4000	400	400	720	820	850	2000	2000 ^d	on request
3500	500/1000 ^e	4000/4500	420	450	820	900	850	2250	2000 ^d	W/D 125/190
4000	500/1000 ^e	4500/5000	400	500	900	900	850	2400	2000 ^d	W/D 200/340
4500	500/1000 ^e	5000/5500	400	550	900	900	850			

a) Dimensions apply to 60 kN dock leveller with 40 mm panel thickness b) On request for capacity 60 kN c) On request for capacity 60/80/100 kN
d) Standard value for all nominal lengths e) Max. capacity 80 kN

**ulti
group**

105 Glover Road, Hawera, 4610
PO Box 340, Hawera, 4640

CALL FREE NZ
EMAIL
WEBSITE

0800 807 753
sales@ultigroup.co.nz
ultigroup.co.nz