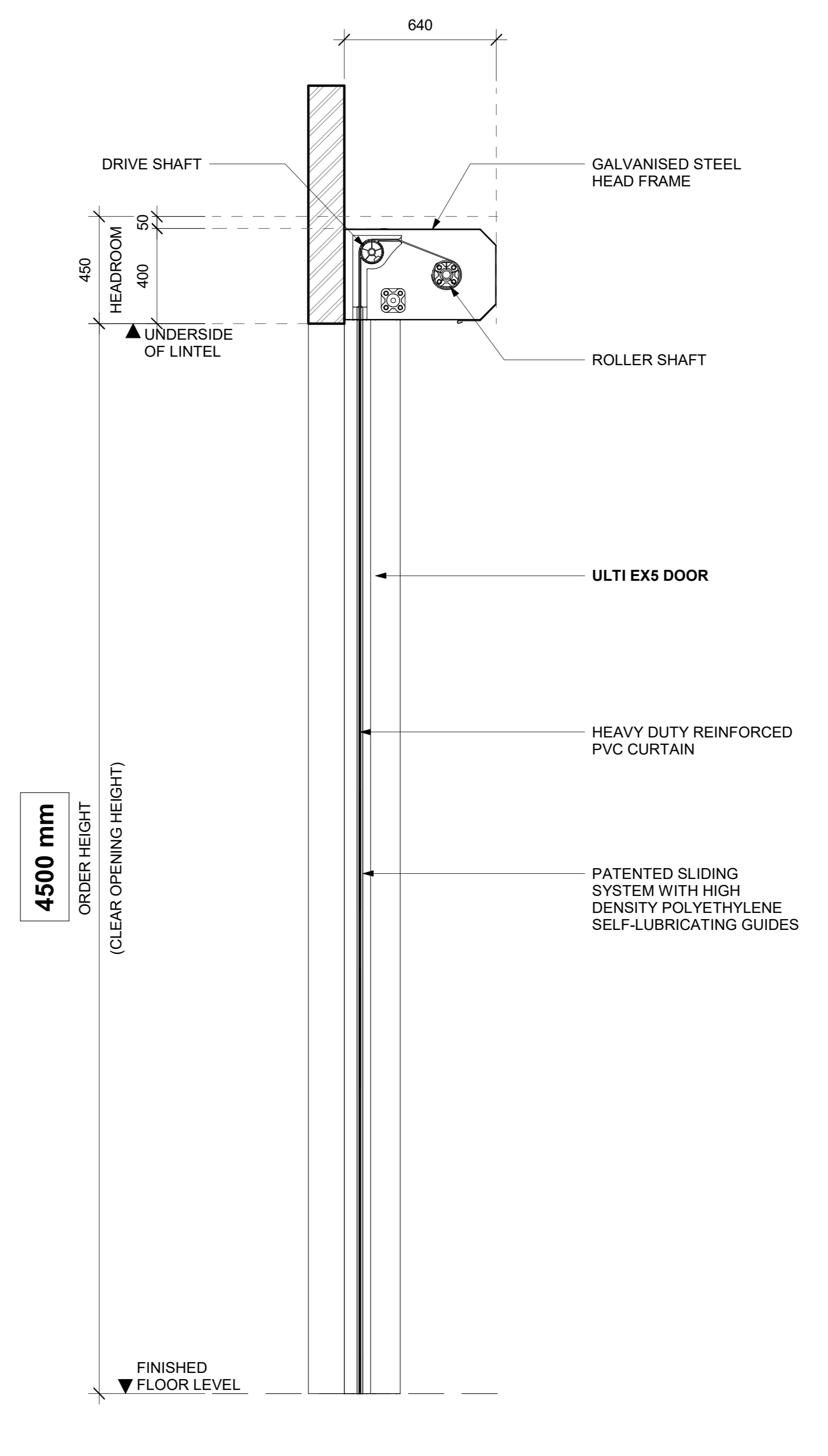
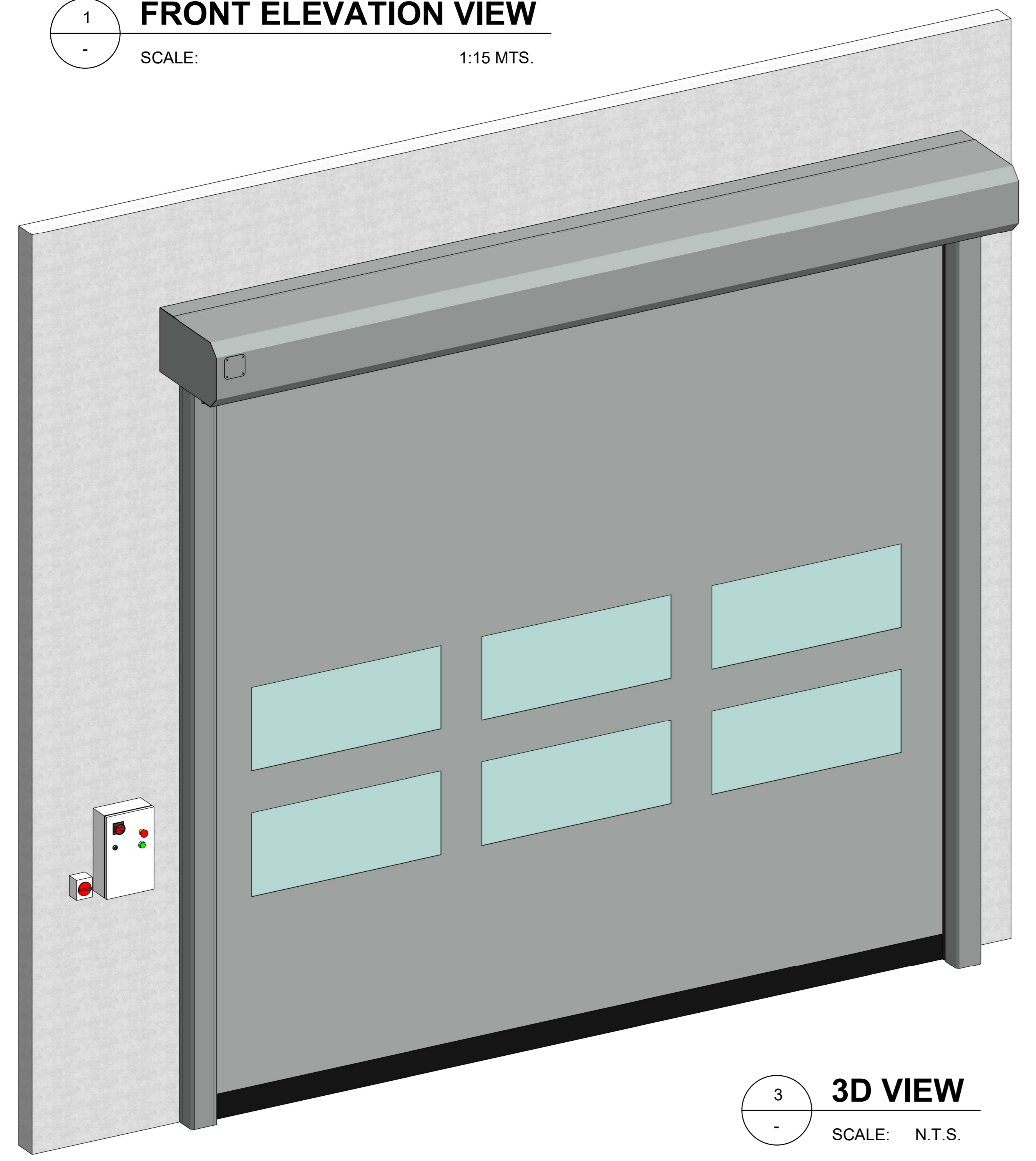


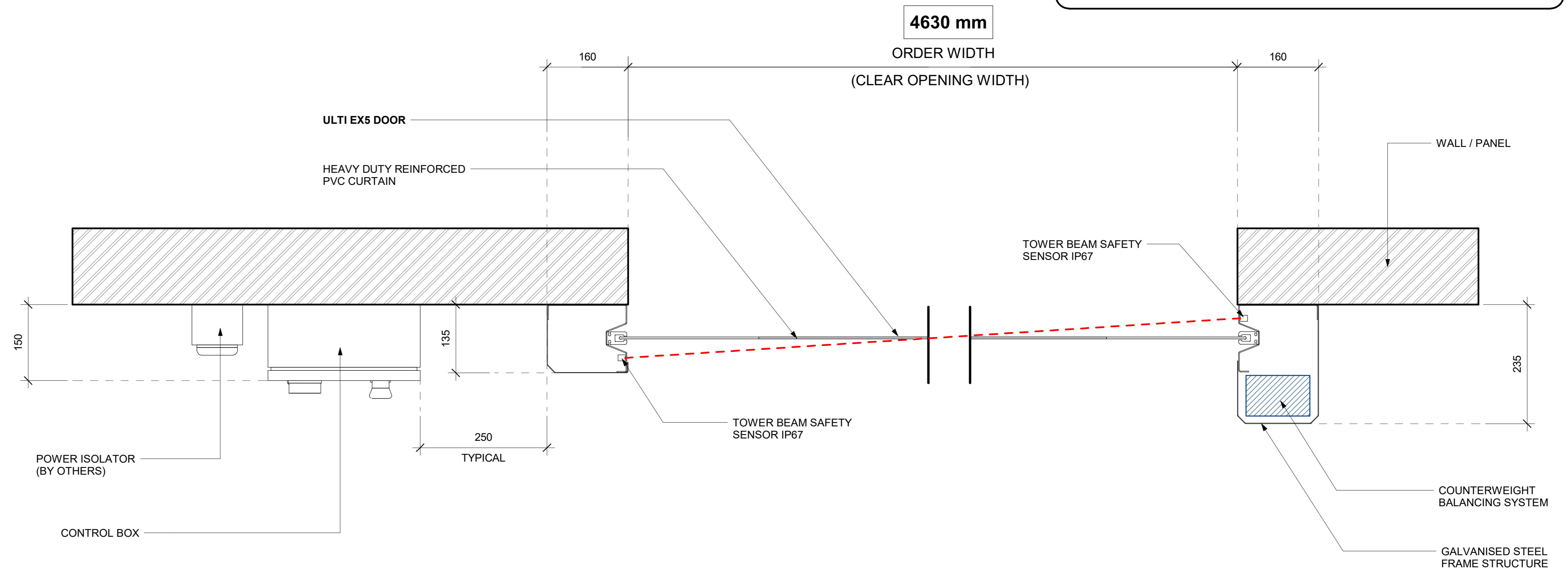
1 FRONT ELEVATION VIEW
SCALE: 1:15 MTS.



2 SECTION VIEW
SCALE: 1:15 MTS.



3 3D VIEW
SCALE: N.T.S.



4 FLOOR PLAN VIEW
SCALE: 1:5 MTS.

END USER :	-
DOOR REFERENCE :	-
VERSION NO. :	VERSION 1
PRODUCT GROUP :	HIGH SPEED DOORS
STOCK CODE :	00000
APPLICATION :	EXTERNAL
* CLEAR OPENING HEIGHT :	4500 mm
* CLEAR OPENING WIDTH :	4630 mm
* HEADROOM :	450 mm
* SIDE ROOM - MOTOR SIDE :	290 mm
* SIDEROOM - NON MOTOR SIDE :	190 mm
FRAME MATERIAL :	GALVANISED STEEL
* FRAME COLOUR :	RAL 7042 - GREY
CURTAIN MATERIAL :	REINFORCED PVC CURTAIN
* CURTAIN COLOUR INSIDE :	RAL 7042 - GREY
* CURTAIN COLOUR OUTSIDE :	RAL 7042 - GREY
* VISION PANEL :	2 ROWS
BOTTOM OF VISION :	1285 mm
TOP OF VISION :	2535 mm
BOTTOM OF VENTILATED :	N / A
TOP OF VENTILATED :	N / A
MOTORISATION :	IP54 RATED 3 PHASE MOTOR DRIVE & ELECTROMAGNETIC BRAKE
MOTOR POSITION :	LEFT HAND
CONTROL PANEL :	LEFT HAND
EXTRA CONTROL PANEL CABLE LENGTH :	N / A
* POWER SUPPLY :	3 PHASE, 400V + NEUTRAL + EARTH 15 Amp
HEATING POWER SUPPLY :	N / A
* ACTIVATION INSIDE :	PUSH BUTTON
* ACTIVATION OUTSIDE :	PUSH BUTTON
* OPTIONAL ACTIVATION :	-
* OPTIONAL SAFETY :	-
* OPTIONAL EMERGENCY EGRESS :	-
* WALL TYPE :	-
* WALL THICKNESS :	-
* PIGGYBACK FRAME :	-
* OPTIONAL SELECTIONS :	<input type="checkbox"/> PRINTED LOGO <input type="checkbox"/> FULL PRINTED CURTAIN <input type="checkbox"/> WINDLOAD UPGRADE



© Ulti Group Ltd, 2021

NOTE:
CONTACT ULTI GROUP FOR ANY CUSTOMISATIONS AND TO DISCUSS PROJECT SPECIFIC INFORMATION
www.ultigroup.co.nz
sales@ultigroup.co.nz
Phone: 0800 807 753
105 Glover Road, Hawera, 4610

CLIENT APPROVAL : (PLEASE CHECK & APPROVE THE FOLLOWING POINTS)

- POWER SUPPLY REQUIREMENT
- POWER SUPPLY LOCATION
- CLEAR OPENING DIMENSION ' WIDTH & HEIGHT '
- SIDE ROOM CLEARANCE ' LEFT & RIGHT '
- HEADROOM CLEARANCE
- COLOURS (FRAME & CURTAIN)
- WINDOWS / VISION
- MOUNTING SURFACES
- ACTIVATIONS
- EXTRA e.g. SAFETY FEATURES, ETC.

SIGNED _____
NAME : _____
POSITION : _____
DATE : _____

REVISIONS			
REV.	DESCRIPTION	BY	DATE

TITLE: **ULTI EX5 HIGH SPEED DOOR**
PROJECT CLIENT: -
ULTI PROJECT REFERENCE NO. : -
SHEET NO. : 1 OF 1
DATE : NOV. 30, 2021

DRAWING NUMBER : **ULTIROLL-EX5-001**
APPROVED BY : J.PRESTIDGE
DRAWN BY : J.ENRIQUEZ
SCALE : As indicated
SHT. SIZE : A0
*All dimensions are in millimeters unless otherwise specified