

Vertical Storing Dock Levellers

UPRIGHT STORING DOCK LEVELLERS

Dock levellers which store upright, therefore offering superior security and environmental control by allowing the truck to fully dock before opening the trailer doors.

Hydraulic

Hydraulic positioning of both the lip and platform ensures high reliability and low maintenance of the dock leveller, and push button activation provides the dock attendant with simple control for easy and safe operation.

Increased Safety

Constant-pressure push-button controls keep operator in control of leveller movement at all times, and run-off guards prevent forklift drivers from accidentally driving off the side of the leveller.



Ideal for use in

- Logistics
- Supermarkets
- Cold Storage
- Warehouses
- Airports
- Seaports

Safety System



Improved Cleanliness

Vertical storing position allows for easy routine pit cleaning or full wash-down.

Maximum Environmental Control

With the overhead door closing to the dock pit floor, dust, debris and rodents are prevented from entering your facility, and energy loss is reduced from the door being airtight. Also, energy loss is reduced due to the leveller allowing trailer doors to remain closed until fully positioned at the dock.

Door Protection

Storing vertically in front of the door, the Vertical Leveller acts as a guard against vehicle impact to your dock doors, preventing door damage from accidental impacts.

Smooth Transition

From the rear hinge to the front hinge, the Vertical Dock Leveller provides a smooth transition between the dock, leveller and trailer to help prevent injuries, and minimize forklift and product damage.

Operation

Fully hydraulic. The movement of the leveler ramp and lip is controlled electro-hydraulically from a NEMA 4X rated push-button station. Pushing a button on the control box shall lower and/or raise the unit.

Constant pressure is required for ramp movement; ramp shall not lower by gravity alone. The lip can be extended at any time during the cycle from the push-button station; end-loading and below-dock end-loading position is obtained without recycling the leveler

SIZE OPTIONS

Width	1829 mm	1980 mm	2134 mm	
Height	1829 mm	2438 mm	3048 mm	3658 mm

RAMP DETAILS

Guards	Run-off Guards
Lip Length	406 mm
Lip Control	infinite
Bumpers	305 mm x 381 mm x 102 mm laminated
Colours	2-coat Grey

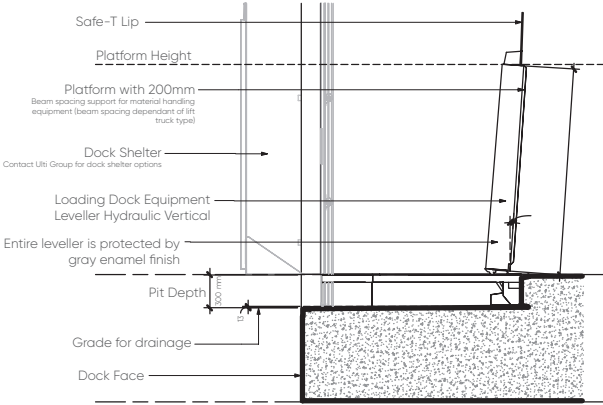
MOTORISATION

Motor	1 hp
Control Panel	NEMA 4X rated push-button
Power Supply	208/240V or 440/480V 3 phase

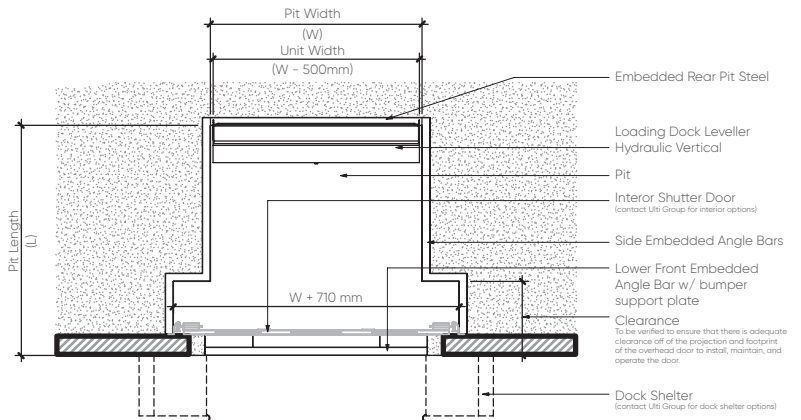
HYDRAULICS

Power Unit	integral 1-1/2 GPM electrohydraulic
Pump	Submerged

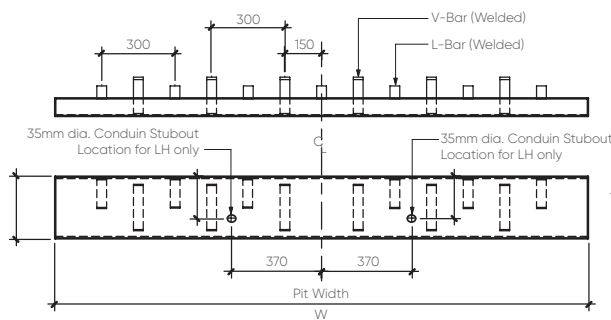
DIMENSIONS



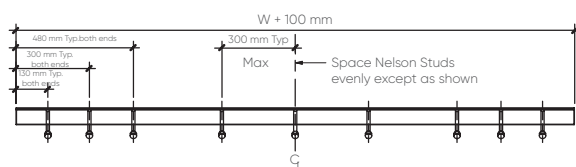
SIDE ELEVATION VIEW



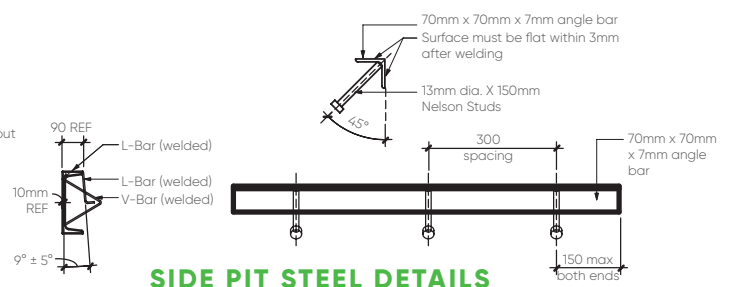
FLOOR PLAN VIEW



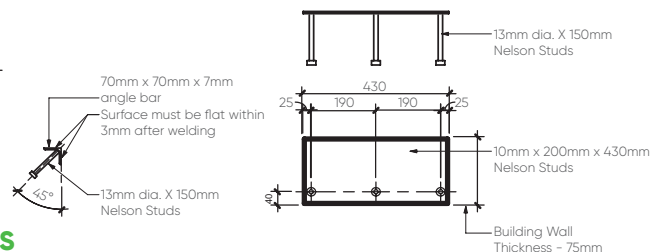
REAR PIT STEEL DETAILS



BOTTOM FRONT STEEL & BUMPER PLATE DETAILS



SIDE PIT STEEL DETAILS



Fluid	Biodegradable
Valves	2 solenoid valves

ACTIVATIONS

Manual	Constant-pressure control buttons
--------	-----------------------------------

SAFETY

Features	Integral maintenance strut Toe deflectors
Mechanical Safety	Non-adjustable hydraulic velocity fuse

STANDARD FEATURES

Ramp	Optimized Lip Chamfer Smooth Transition Technology Design
Hydraulics	Power up/power down system

WARRANTY

Five-year parts and one-year labor warranty
