

Thermo 40

INSULATED SECTIONAL DOORS



This door system combines excellent sound and thermal insulation properties, with clean, modern designed 40mm micro-profiled panels. Application options are almost limitless due to the extensive range of colours, vision options and unique hardware configurations available, making it ideal for a wide variety of projects.

Energy Saving

Thermal Performance of this door is ensured, given the quality PU high-density panel core complemented by robust full perimeter seals. A U-value of 1.02W/m²K ensures optimum energy management of controlled environments, whether cooled or heated.

Sound Insulation

The Thermo 40 door system is certified for world class performance. Tested by TÜV Nord, airborne sound reduction acc. to EN717-1 is 25dB which means it can be applied to any project requiring effective sound reduction.

Ideal for use in

- Warehouses
- Distribution centres
- Manufacturing facilities
- Logistics companies
- Heavy-use environments
- Industrial facilities
- Convention centres
- Airports or Military

Architectural Applications

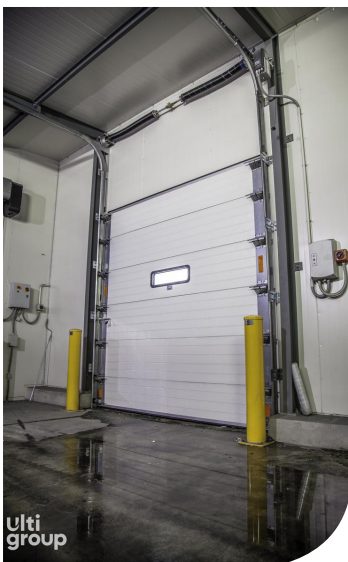
Exterior of panels has a micro-line profiling and a polyester coating available in multiple colour selections. This can be complemented by various window sizes. Either one or more panels can be replaced with anodised aluminium profiles which allows multiple glazing options. Alternatively, vision options include extra low burglar resistant windows or attractive round windows.

Safety Certified

Built to exceed AS/NZS standards, you can trust the Thermo 40 door system to protect your people at all times. The door hardware systems include multiple safety enhancements and have been stress tested and assessed to fully comply to EN13241-1 and are all TÜV Nord certified.

Configurability

Uniquely customisable components ensure the door can be correctly adapted to optimise design and function. Multiple automation and safety systems are available including high speed operation. This flexibility ensures you receive what you need.



TECHNICAL SPECIFICATIONS

Application	Internal/External
Minimum Size	1800mm W x 1800mm H
Maximum Size	8000mm W x 6000mm H
Opening Speed	Up to 200mm/sec

STRUCTURE

Track	T450 track system for Std. lift
Bottom Profile	Opto-sensor safety edge system
Springs	30,000 cycle rated springs
Seals	EPDM rubber door seals

SPACE REQUIREMENTS

minimum clearances

Headroom	450mm
----------	-------

PANELS

Material	Thermo 40mm panels with micro-profile exterior, U-value: 1.02W/m ² K
Exterior Colour	RAL 9002 (standard)
Interior Colour	RAL 9002 (standard)

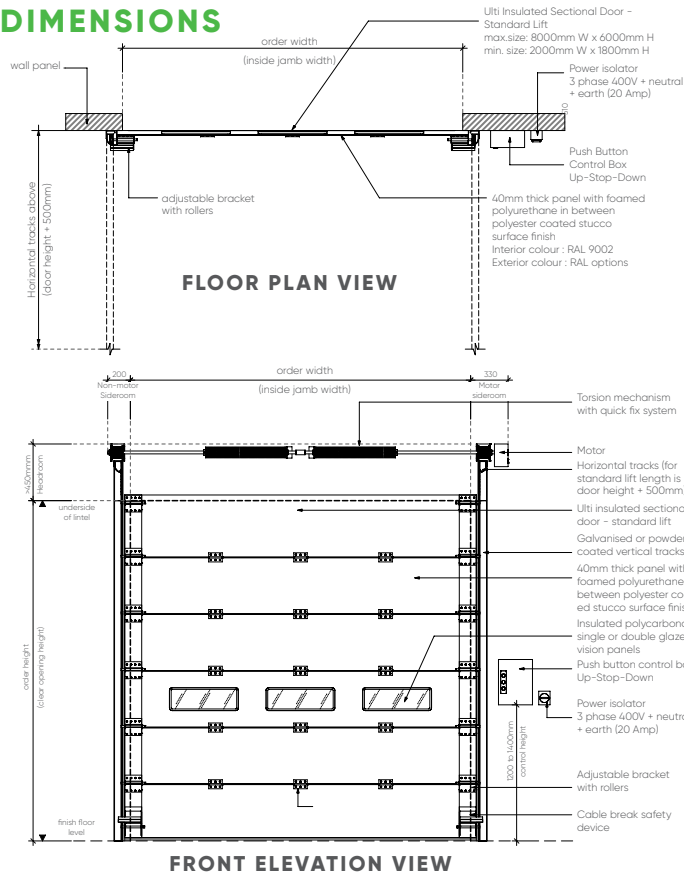
MOTORISATION

Motor	T75 automation package: 0.37kW
Control Unit	Push button control box, up-stop-down
Power Supply	400V 3 Phase+N+E 16Amp 50Hz
Torque	50 Nm
Orientation	RH mounted

SAFETY

Mechanical Safety	Cable break safety devices
	Emergency hand chain

DIMENSIONS



OPTIONAL FEATURES

Alternative Track Systems	
Low Headroom	T240 Max door width 6500mm/Max door size 22m ²
High Lift	T400
Vertical lift	T500 Opening height + 600mm; Max door size 35m ²
Roof Angle Track System	1-30°
Track System Colour	Powder coated in RAL7040
Automation Packages	
T100	Heavy Duty automation package (door sizes >20m ²)
T100 Smart	Smart automation package (door sizes <27m ²)
T100 Speed	Speed automation package (<22m ²) <600mm/sec opening speed
Activations	
	Exterior push buttons
	Interior and/or exterior key switch
Power Supply	
	240V single phase +N+E 15Amp (isolator required adjacent to control box, by others)
Battery Backup	UPS only for 240V option
Motorisation	
	Left handed motor and/or control box
Exterior Colours	
	RAL3000, RAL5003, RAL5010, RAL6009, RAL7005, RAL7012, RAL7016, RAL7021, RAL7038, RAL8014, RAL9002, RAL9005, RAL9006, RAL9007, RAL9010
Photocells	
	Wireless Leading-Edge Photocell
Springs	
	60,000 cycle rated springs and spring break safety device
Window Panels/Glazing	
Standard Vision Window w/in Thermo Panel	Double glazed, 630mm W OD x 305mm H OD, R60
Alternative Vision Window w/in Thermo Panel	Circular Vision windows, 325mm OD, 250mm ID Burglar Resistant Vision windows, 610mm W OD x 145mm H OD, R45 Large Vision Windows, 680mm W OD x 370mm H OD
Standard Full Width Glazing in Anodised Aluminium Frame	Single glazed 4mm safety glass
Alternative Full Width Glazing	20mm Double glazed, 4mm glass, scratch resistant 20mm Double glazed, 3mm Polycarbonate Insulated Rodeca Polycarbonate Glazing, Translucent (light transmission 63%) or black, grey, brown, milky white Perforated Aluminium Plate Ventilation Panels
Frames	
	Aluminium frames to be colour matched to Thermo panel
Activation Options T100 Smart Required	
	Pull Switch, Key-operated Switch, Touchless Hand Sensor, Virtual Vision, Radar, Remote Controls, Proximity Sensors
	LED Traffic Lights, pair (red/green)
Door Options	
	Integrated Wicket Door with closer/cylinder lock up to 6000mm door width Lock status monitoring switch for security alarm for the wicket door

Matching Separate Personnel Access Door

